

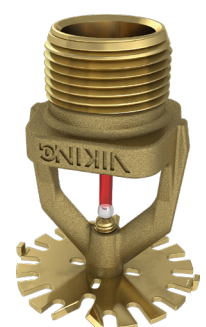


Trusted above all.



Extended Coverage Sprinklers

Quick Reference Guide | EMEA





Introduction to Extended Coverage Sprinklers

Viking is renowned for the development, manufacturing, sales and distribution of excellent fire protection technologies and has been a dependable partner in fire protection for many decades.

The broad product portfolio encompasses innovative and proven system components for water, foam and gas extinguishing systems as well as fire detection systems and is a reflection of Viking's unwavering focus on providing customers with the finest products and highest level of support.

Through Viking's dedicated and knowledgeable customer service, installers of fixed fire protection systems have access to those quality products and can place their trust in the professional and dedicated support services provided by Viking employees. From the smallest project to the largest endeavour, Viking is their single-point partner with the goal to provide the right material whenever and wherever needed.

Viking is passionate about fire protection and committed to the growth of the fixed fire protection industry. As Viking is completely focused and dedicated to this market, customers can have confidence that Viking has the expertise that they need to be successful. They can count on Viking's resources and technical expertise to help them whenever they have a challenge to overcome. And they can be sure to find the right product or solution for their project with the necessary approval or accreditation.

This quick reference guide provides an overview of Viking's comprehensive range of extended coverage products. Besides access to those products, customers benefit from a market leading technical support team across Europe and the Middle East, which also holds regular technical training courses on water, foam, gas and detection systems, products and maintenance.

Learn more at www.viking-emea.com.

Table of contents

Pendent & Recessed Pendent Sprinklers	3
Upright Sprinklers	5
Horizontal Sidewall Sprinklers	6
Flat Plate Concealed Horizontal Sidewall Sprinklers	7
Flat Plate Concealed Pendent Sprinklers	7

How to order products stating a Base part no.:

How to order glass bulb sprinklers							
Base part no.	+	Finish code		+	Temperature (°C) code	Bulb colour	
XXXXX	+	Brass	A	+	57	A	Orange
		Chrome	F		68	B	Red
		White	M-/W		79	D	Yellow
		Black	M-/B		93	E	Green
		ENT (Electroless Electroless Nickel PTFE)	JN		141	G	Blue
Examples:	10335AE = 10335 + Brass (A) + 93 °C (E) 08339AD = 08339 + Brass (A) + 79 °C (D)						

How to order fusible link sprinklers							
Base part number	+	Finish code		+	Temperature (°C) code	Frame colour code	
XXXXX	+	Brass	A	+	74	C	None
					96	E	White
Example:	14535AC = 14535 + Brass (A) + 74 °C (C)						

For all applicable approvals, please refer to the technical documentation or contact your local Viking sales office.

Pendent & Recessed Pendent Sprinklers

VK600 | K81 (5.6) | Base part no. 06778B



- Listed to 12 bar (175 psi)
- 15 mm / 1/2" (NPT)
- Light hazard
- Standard response - 68 °C, 79 °C
- Quick response - 57 °C, 68 °C, 79 °C
- Standard wrench - part no. 10896W/B
- Recessed wrench - part no. 13577W/B
- Glass bulb

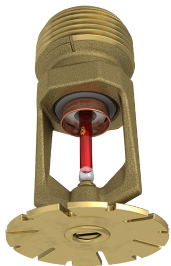
Coverage area m (ft.)	Horizontal ceiling	
	Flow lpm (gpm)	Pressure bar (psi)
4.9 x 4.9 ¹ (16 x 16)	98.4 (26)	1.49 (21.6)
5.5 x 5.5 ¹ (18 x 18)	124.9 (33)	2.39 (34.7)
6.1 x 6.1 ^{2,3} (20 x 20)	151.4 (40)	3.52 (51.0)

¹ cULus listed for quick response only. FM approved for quick response.

² cULus quick response listing available in 57 °C only. FM quick response listing includes 57 °C, 68 °C and 79 °C.

³ Standard response listing also available in 79 °C.

VK602 | K115 (8.0) | Base part no. 18262



- Listed to 12 bar (175 psi)
- 20 mm / 3/4" (NPT)
- Light hazard
- Standard response - 68 °C, 79 °C
- Quick response - 57 °C, 68 °C, 79 °C
- Standard wrench - part no. 10896W/B
- Recessed wrench - part no. 13577W/B
- Glass bulb

Coverage area m (ft.)	Horizontal ceiling	
	Flow lpm (gpm)	Pressure bar (psi)
4.9 x 4.9 ¹ (16 x 16)	98.4 (26)	1.49 (21.6)
5.5 x 5.5 ¹ (18 x 18)	124.9 (33)	2.39 (34.7)
6.1 x 6.1 ² (20 x 20)	151.4 (40)	3.52 (51.0)

¹ cULus listed for quick response only. FM approved for quick response.

² cULus quick response listing available in 57 °C only. FM quick response listing includes 57 °C, 68 °C, and 79 °C.

VK608 | K161 (11.2) | Base part no. 08339



- Listed to 12 bar (175 psi)
- 20 mm / 3/4" (NPT)
- Light hazard
- Standard response - 68 °C
- Quick response - 57 °C, 68 °C, 79 °C
- Standard wrench - part no. 05118CW/B
- Recessed wrench - part no. 11663W/B
- FM Approved
- Listed with concrete tees up to 762 mm (30") in depth
- Glass bulb

Coverage area m (ft.)	Horizontal ceiling	
	Flow lpm (gpm)	Pressure bar (psi)
4.9 x 4.9 ¹ (16 x 16)	98.4 (26)	1.49 (21.6)
5.5 x 5.5 ¹ (18 x 18)	124.9 (33)	2.39 (34.7)
6.1 x 6.1 ² (20 x 20)	151.4 (40)	3.52 (51.0)

¹ Available for quick response only.

² cULus quick response listing in 57 °C and 79 °C only. FM quick response listing also includes 68 °C.



Pendent & Recessed Pendent Sprinklers

VK534 | K161 (11.2) | Base part no. 08340



- Listed to 12 bar (175 psi)
- 20 mm / 3/4" (NPT)
- Light/Ordinary hazard: QR listing for light and ordinary hazard may allow for design area reduction
- Standard/Quick response - 68 °C, 79 °C, 93 °C, 141 °C
- Standard wrench - p/n 07297W/B,
Recessed wrench - p/n 13032W/B
- Listed with concrete tees up to 762 mm (30") in depth
- Available with Electroless Nickel PTFE (ENT) coating for corrosion resistance
- Glass bulb

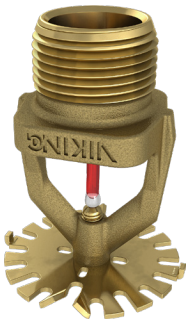
Coverage area m (ft.)	Horizontal ceiling	
	Flow lpm (gpm)	Pressure bar (psi)
LIGHT HAZARD		
4.9 x 4.9 ¹ (16 x 16)	98.4 (26)	1.49 (21.6)
5.5 x 5.5 ¹ (18 x 18)	124.9 (33)	2.39 (34.7)
6.1 x 6.1 ¹ (20 x 20)	151.4 (40)	3.52 (51.0)
ORDINARY HAZARD*		
3.7 x 3.7 ¹ (12 x 12)	113.6 (30)	0.50 (7.2)
4.3 x 4.3 ¹ (14 x 14)	113.6 (30)	0.50 (7.2)
4.9 x 4.9 ² (16 x 16)	143.9 (38)	0.79 (11.5)
5.5 x 5.5 ² (18 x 18)	185.5 (49)	1.32 (19.1)
6.1 x 6.1 ² (20 x 20)	227.1 (60)	1.98 (28.7)

¹ Available for quick response only.

² Available for standard response only.

* Design data listed above is for OH Group 1. See technical datasheet for Group 2 data.

VK572 | K202 (14.0) | Base part no. 13722



- Listed to 12 bar (175 psi)
- 20 mm / 3/4" (NPT)
- Ordinary hazard: QR Listing for ordinary hazard may allow for design area reduction
- Standard/Quick response - 68 °C, 79 °C, 93 °C, 141 °C
- Standard wrench - part no. 07297W/B
Recessed wrench - part no. 13032W/B
- FM Approved for HC1, HC2, and HC3 occupancies
- Listed with concrete tees up to 762 mm (30") in depth
- Available with Electroless Nickel PTFE (ENT) coating for corrosion resistance
- Glass bulb

Coverage area m (ft.)	Horizontal ceiling	
	Flow lpm (gpm)	Pressure bar (psi)
ORDINARY HAZARD*		
3.7 x 3.7 ¹ (12 x 12)	113.6 (30)	0.50 (7.2)
4.3 x 4.3 ¹ (14 x 14)	113.6 (30)	0.50 (7.2)
4.9 x 4.9 ² (16 x 16)	143.9 (38)	0.79 (11.5)
5.5 x 5.5 ² (18 x 18)	185.5 (49)	1.32 (19.1)
6.1 x 6.1 ² (20 x 20)	227.1 (60)	1.98 (28.7)

¹ Available for quick response only.

² Available for standard response only.

* Design data listed above is for OH Group 1. See technical datasheet for Group 2 data.

Upright Sprinklers

VK532 | K161 (11.2) | Base part no. 08687



- 20 mm / 3/4" (NPT)
- Light/Ordinary hazard: QR listing for light and ordinary hazard may allow for design area reduction
- Standard response - 68 °C, 79 °C, 93 °C, 141 °C
- Quick response - 57 °C, 68 °C, 79 °C, 93 °C, 141 °C
- Standard wrench - part no. 05118CW/B
- FM approved for HC1, HC2, and HC3 occupancies
- Listed with concrete tees up to 762 mm (30") in depth
- Available with Electroless Nickel PTFE (ENT) coating for corrosion resistance
- Glass bulb

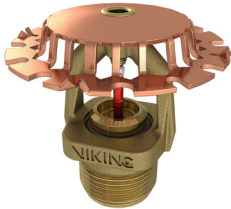
Coverage area m (ft.)	Horizontal ceiling	
	Flow lpm (gpm)	Pressure bar (psi)
LIGHT HAZARD		
4.9 x 4.9 ¹ (16 x 16)	98.4 (26)	1.49 (21.6)
5.5 x 5.5 ¹ (18 x 18)	124.9 (33)	2.39 (34.7)
6.1 x 6.1 ¹ (20 x 20)	151.4 (40)	3.52 (51.0)
ORDINARY HAZARD*		
3.7 x 3.7 ¹ (12 x 12)	113.6 (30)	0.50 (7.2)
4.3 x 4.3 ¹ (14 x 14)	113.6 (30)	0.50 (7.2)
4.9 x 4.9 ² (16 x 16)	143.9 (38)	0.79 (11.5)
5.5 x 5.5 ² (18 x 18)	185.5 (49)	1.32 (19.1)
6.1 x 6.1 ² (20 x 20)	227.1 (60)	1.98 (28.7)

¹ Available for quick response only.

² Available for standard response only.

* Design data listed above is for OH Group 1. See technical datasheet for Group 2 data.

VK570 | K202 (14.0) | Base part no. 13840



- Listed at 12 bar (175 psi)
- 20 mm / 3/4" (NPT)
- Ordinary hazard: QR listing for ordinary hazard may allow for design area reduction
- Standard response - 68 °C, 79 °C, 93 °C, 141 °C
- Standard wrench - part no. 07297W/B
- Listed with concrete tees up to 762 mm (30") in depth
- Available with Electroless Nickel PTFE (ENT) coating for corrosion resistance
- Glass bulb

Coverage area m (ft.)	Horizontal ceiling	
	Flow lpm (gpm)	Pressure bar (psi)
ORDINARY HAZARD*		
3.7 x 3.7 ¹ (12 x 12)	113.6 (30)	0.50 (7.2)
4.3 x 4.3 ¹ (14 x 14)	113.6 (30)	0.50 (7.2)
4.9 x 4.9 ² (16 x 16)	143.9 (38)	0.79 (11.5)
5.5 x 5.5 ² (18 x 18)	185.5 (49)	1.32 (19.1)
6.1 x 6.1 ² (20 x 20)	227.1 (60)	1.98 (28.7)

¹ Available for quick response only.

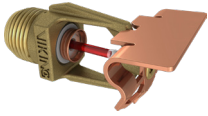
² Available for standard response only.

* Design data listed above is for OH Group 1. See technical datasheet for Group 2 data.



Horizontal Sidewall Sprinklers

VK605 | K81 (5.6) | Base part no. 12120

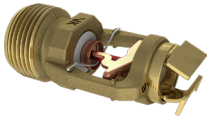


- 15 mm / 1/2" (NPT)
- Light hazard
- Standard response: 68 °C, Quick response: 57 °C, 68 °C & 79 °C
- 152-305 mm (6-12") deflector distance to ceiling for horizontal ceilings, 102-152 mm (4-6") for ceilings up to 18.4 ° (4/12) pitch
- Standard wrench - part no. 10896W/B
Recessed wrench - part no. 13655W/B
- Listed for high pressure: 17.2 bar (250 psi) as VK612 (p/n 12295)
- Glass bulb

Coverage area m (ft.)	Horizontal ceiling	
	Flow lpm (gpm)	Pressure bar (psi)
4.9 x 4.9 ¹ (16 x 16)	98.4 (26)	1.49 (21.6)
4.9 x 5.5 ¹ (16 x 18)	109.8 (29)	1.85 (26.8)
4.9 x 6.1 ¹ (16 x 20)	121.1 (32)	2.25 (32.7)

¹ Also available for sloped ceilings up to 18° (4/12) pitch with same flows and pressures, installed 102-152 mm (4-6") below ceiling.

VK630 | K115 (8.0) | Base part no. 13500



- 20 mm / 3/4" (NPT)
- Light hazard
- Quick response: 57 °C, 68 °C & 79 °C
- Approved for 102-305 mm (4-12") down from ceiling
- Standard wrench - part no. 10896W/B
Recessed wrench - part no. 13655W/B
- Also available in a domed concealed model (p/n 13500A-X)
- Available with Electroless Nickel PTFE (ENT) coating for corrosion resistance
- Glass bulb

Coverage area m (ft.)	Horizontal ceiling	
	Flow lpm (gpm)	Pressure bar (psi)
4.3 x 7.3 ¹ (14 x 24)	128.7 (34)	1.25 (18.1)
4.3 x 7.3 ² (14 x 24)	136.3 (36)	1.40 (20.3)
4.3 x 7.9 ¹ (14 x 26)	144.0 (38)	1.56 (22.6)
4.3 x 7.9 ² (14 x 26)	174.1 (46)	2.28 (33.1)
4.9 x 4.9 (16 x 16)	98.4 (26)	0.73 (10.6)
4.9 x 5.5 (16 x 18)	109.8 (29)	0.91 (13.1)
4.9 x 6.1 ¹ (16 x 20)	121.1 (32)	1.10 (16.0)
4.9 x 6.7 ¹ (16 x 22)	136.3 (36)	1.40 (20.3)
4.9 x 7.3 ¹ (16 x 24)	147.6 (39)	1.64 (23.8)
5.5 x 5.5 (18 x 18)	124.9 (33)	1.17 (17.0)
5.5 x 6.2 (18 x 20)	136.3 (36)	1.40 (20.3)
5.5 x 6.7 818 x 22)	151.4 (40)	1.72 (25.0)

¹ 102-152 mm (4-6") down from ceiling.

² 152-305 mm (6-12") down from ceiling.

* Flows and pressures listed above are based on UL Listings only.

VK638 | K115 (8.0) | Base part no. 17375 (Corridor sprinkler)



- 20 mm (3/4"NPT)
- Light hazard
- Quick response: 57 °C, 68 °C & 79 °C
- Standard wrench - part no. 10896W/B
Recessed wrench - part no. 13655W/B
- Well suited for hallways, corridors, breeze ways, and other applications requiring a wide spray pattern
- Also available in a domed concealed model (part no. 17375A-X)
- Glass bulb

Coverage area m (ft.)	Horizontal ceiling	
	Flow lpm (gpm)	Pressure bar (psi)
8.5 x 3.7 ¹ (28 x 12)	128.7 (34)	1.24 (18.1)
8.5 x 4.3 ¹ (28 x 14)	151.4 (40)	1.73 (25.0)

¹ 102-305 mm (4-12") down from ceiling.

Flat Plate Concealed Horizontal Sidewall Sprinklers

VK680 | K115 (8.0) | Base part no. 17114AC



- 20 mm / 3/4" (NPT)
- Light hazard
- Quick response - Sprinkler 74 °C; Cover 57 °C
- Listed for installation 112 to 314 mm (4-3/8 to 12-3/8") down from ceiling (measured to the center line of sprinkler)
- Wrench: part no. 16208W/R
- Use coverplate part no. 16207 (sold separately)
- Coverplate 84 mm (3-5/16") diameter, adjustment up to 6 mm (1/4")
- Fusible link

Coverage area m (ft.)	Horizontal ceiling		
	Flow lpm (gpm)	Pressure bar (psi)	Sprinkler distance below ceiling, mm (inch)
4.3 x 6.7 (14 x 22)	117 (31)	1.04 (15.0)	112 - 314 (4-3/8" to 12-3/8")
4.9 x 4.9 (16 x 16)	98 (26)	0.73 (10.6)	
4.9 x 5.5 (16 x 18)	110 (29)	0.91 (13.1)	
4.9 x 6.1 (16 x 20)	121 (32)	1.10 (16.0)	
4.9 x 6.7 (16 x 22)	136 (36)	1.40 (20.3)	
5.5 x 5.5 (18 x 18)	125 (33)	1.20 (17.0)	
5.5 x 6.2 (18 x 20)	136 (36)	1.40 (20.3)	
5.5 x 6.7 (18 x 22)	151 (40)	1.72 (25.0)	112 - 162 (4-3/8" to 6-3/8")
4.3 x 7.3 (14 x 24)	129 (34)	1.25 (18.1)	
4.9 x 7.3 (16 x 24)	148 (39)	1.64 (23.8)	162 - 314 (6-3/8" to 12-3/8")
4.3 x 7.3 (14 x 24)	133 (35)	1.32 (19.2)	
4.9 x 7.3 (16 x 24)	151 (40)	1.72 (25.0)	

Flat Plate Concealed Pendent Sprinklers

VK632 | K81 (5.6) | Base part no. 14613A

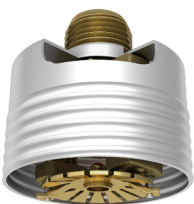


- 15 mm / 1/2" (NPT)
- Light hazard
- Quick response - Sprinkler 57 °C, 68 °C, 79 °C, 93 °C Cover 57 °C, 74 °C
- Wrench: Heavy duty (part no. 14047W/B)
Light duty (part no. 14031)
- Glass bulb

Coverage area m (ft.)	Horizontal ceiling	
	Flow lpm (gpm)	Pressure bar (psi)
4.9 x 4.9 (16 x 16)	98.4 (26)	1.49 (21.6)
5.5 x 5.5 (18 x 18)	124.9 (33)	2.39 (34.7)
6.1 x 6.1 ¹ (20 x 20)	151.4 (40)	3.52 (51.0)

¹ Available for 57 °C and 79 °C only.

VK634 | K115 (8.0) | Base part no. 14535A

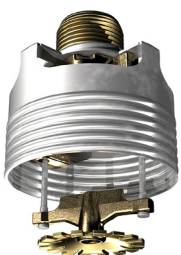


- 20 mm / 3/4" (NPT)
- Light hazard
- Quick response - Sprinkler 57 °C, 68 °C, 79 °C, 93 °C Cover 57 °C, 74 °C
- Wrench: Heavy duty (part no. 14047W/B)
Light duty (part no. 14031)
- Glass bulb

Coverage area m (ft.)	Horizontal ceiling	
	Flow lpm (gpm)	Pressure bar (psi)
4.9 x 4.9 (16 x 16)	98.4 (26)	1.49 (21.6)
5.5 x 5.5 (18 x 18)	124.9 (33)	2.39 (34.7)
6.1 x 6.1 ¹ (20 x 20)	151.4 (40)	3.52 (51.0)

¹ Available for 57 °C and 79 °C only.

VK636 | K161 (11.2) | Base part no. 16102A



- 20 mm / 3/4" (NPT)
- Light hazard
- Quick response - Sprinkler 74 °C, 96 °C
Cover 57 °C, 74 °C
- Wrench: Heavy duty (part no. 15467W/B)
Light duty (part no. 15466)
- Use ELO 84 mm coverplate (part no. 15765)
(3-5/16" diameter)
- Fusible link

Coverage area m (ft.)	Horizontal ceiling	
	Flow lpm (gpm)	Pressure bar (psi)
4.9 x 4.9 (16 x 16)	113.6 (30)	0.50 (7.2)
5.5 x 5.5 (18 x 18)	124.9 (38)	0.60 (8.7)
6.1 x 6.1 (20 x 20)	151.4 (40)	0.88 (12.8)

Note: Base part numbers for cover plates are 13504 for standard diameter, 13642 for large diameter, 15394 for square, and 15765 for ELO. (Sold Separately)



Flat Plate Concealed Pendent Sprinklers

VK538 | K161 (11.2) | Base part no. 17115A



- 20 mm / 3/4" (NPT)
- Ordinary hazard: QR listing for ordinary hazard may allow for design area reduction
- Quick response - Sprinkler 74 °C, 96 °C; Cover 57 °C, 74 °C
- Wrench: Heavy duty (part no. 15467W/B)
Light duty (part no. 15466)
- Use ELO 84 mm (3-5/16") coverplate (part no. 15765)
- Fusible link

Coverage area m (ft.)	Horizontal ceiling	
	Flow lpm (gpm)	Pressure bar (psi)
ORDINARY HAZARD*		
4.3 x 4.3 (14 x 14)	113.6 (30)	0.50 (7.2)
4.9 x 4.9 (16 x 16)	143.9 (38)	0.79 (11.5)
5.5 x 5.5 (18 x 18)	185.5 (49)	1.32 (19.1)
6.1 x 6.1 ¹ (20 x 20)	227.1 (60)	1.98 (28.7)

¹ Also listed as standard response.

* Design data listed above is for OH Group 1. See technical datasheet for Group 2 data.







Europe, Middle East & Africa

BENELUX

Viking SupplyNet bv
Eekboerstraat 28b-3
NL-7575 AX Oldenzaal
Netherlands
Tel.: +31 (0)541 573233
vikingnetherlands@viking-emea.com

CENTRAL & EASTERN EUROPE

Viking GmbH
Industriestr. 10/12
D-23840 Bad Oldesloe
Germany
Tel.: +49 (0)4531 803 8087
vikinggermany@viking-emea.com

FRANCE

Sprinkler Viking France S.à r.l.
Centre d'Affaires CESCO
4, rue Marconi
BP 25180
F-57075 Metz Cedex 03
France
Tel.: +33 (0)800 10 29 23
vikingfrance@viking-emea.com

IBÉRICA

Viking Sprinkler S.A.
Calle Picos de Europa 4A
San Fernando de Henares
E-28830 Madrid
Spain
Tel.: +34 91 677 8352
vikingiberica@viking-emea.com

ITALY

Viking Italia S.r.l.
Via Pavia, 76
I-27042 Bressana Bottarone (PV)
Italy
Tel.: +39 0383 80071
vikingitaly@viking-emea.com

MIDDLE EAST

Viking Arabia FZE
LOB 19 Office #2007
Post Box No. 17531
Jebel Ali Free Zone, Dubai
United Arab Emirates
Tel.: +971 (0)4 8895 561
vikingdubai@viking-emea.com

NORDIC

Viking Nordic AB
Staffans Väg 5
S-192 78 Sollentuna
Sweden
Tel.: +46 (0)8 594 415 90
vikingsweden@viking-emea.com

POLAND

Viking SupplyNet Sp. z o.o.
ul. Żelazna 59
PL-00 848 Warsaw
Poland
Tel.: +48 22 103 30 54
vikingpoland@viking-emea.com

ROMANIA & BULGARIA

Viking Romania S.r.l.
Strada Vulturilor 18-18A, cam 3
The LOBBY
RO-030855 Bucharest
Romania
Tel.: +40 21 311 51 48
vikingromania@viking-emea.com

TURKEY

Viking Turkey Yangın Korunum Sistemleri Ticaret A.Ş.
Sahrayıcedit Mah. Halk Sokak
Golden Plaza C Blok No:29, Kat:4, Daire:8
Sahrayı Cedit, Kadıköy - 34734 İstanbul
Turkey
Tel.: +90 (0)216 403 18 00
vikingturkey@viking-emea.com

UK & IRELAND

Viking SupplyNet Ltd.
Unit 2 - Byram House, Newborn Court
Chapel Street
Epworth DN9 1HQ
United Kingdom
Tel.: +44 (0)1427 871 000
vikinguk@viking-emea.com

For further information,
please visit
www.viking-emea.com



For further information, please contact your local Viking sales office or refer to the technical documentation.
The contents of this publication are subject to modifications without notice.

Photo
Cover: Fotolia © leeyiutung

Trusted above all.

Viking S.A. | 21, Z.I. Haneboesch, L-4562 Differdange / Niederkorn, Luxembourg | Tel.: +352 58 37 37 - 1, vikinglux@viking-emea.com

