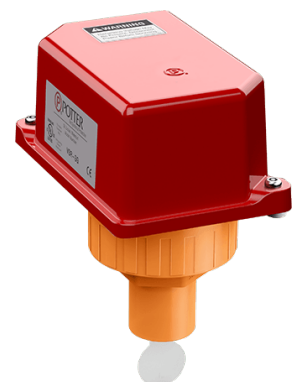




## Alarm Devices & Monitoring

Quick Reference Guide | EMEA





# Introduction to Alarm Devices & Monitoring

Viking is renowned for the development, manufacturing, sales and distribution of excellent fire protection technologies and has been a dependable partner in fire protection for many decades.

The broad product portfolio encompasses innovative and proven system components for water, foam and gas extinguishing systems as well as fire detection systems and is a reflection of Viking's unwavering focus on providing customers with the finest products and highest level of support.

Through Viking's dedicated and knowledgeable customer service, installers of fixed fire protection systems have access to those quality products and can place their trust in the professional and dedicated support services provided by Viking employees. From the smallest project to the largest endeavour, Viking is their single-point partner with the goal to provide the right material whenever and wherever needed.

Viking is passionate about fire protection and committed to the growth of the fixed fire protection industry. As Viking is completely focused and dedicated to this market, customers can have confidence that Viking has the expertise that they need to be successful. They can count on Viking's resources and technical expertise to help them whenever they have a challenge to overcome. And they can be sure to find the right product or solution for their project with the necessary approval or accreditation.

This quick reference guide provides an overview of Viking's comprehensive range of alarm devices and monitoring equipment. Besides access to those products, customers benefit from a market leading technical support team across Europe and the Middle East, which also holds regular technical training courses on water, foam, gas and detection systems, products and maintenance. Learn more at [www.viking-emea.com](http://www.viking-emea.com).

## Table of contents

Water Motor Alarms	3
Pressure Switches	4
Pumpboards	6
Flow Switches	7
Pressure Gauges	8
Flow Meters	10
Monitoring	11
Zonecheck	13

**For all applicable approvals, please refer to the technical documentation or contact your local Viking sales office.**

# Water Motor Alarms

## F-2 Water motor alarm | UL/FM/CE/LPCB



Approvals	UL, FM, CE, LPCB
Sizes	1/2" (DN15)
Features	Viking label

Size	Connection	Part number
1/2"/DN15	Threaded	07862

## AG-2 Water motor alarm | FM/CE/VdS



Approvals	FM, CE, VdS
Sizes	1/2" (DN15)
Features	Viking label

Size	Connection	Part number
1/2"/DN15	Threaded	916289



# Pressure Switches

## PS10 Alarm pressure switch | UL/FM/VdS/LPCB



Approvals	UL, FM, VdS, LPCB
Sizes	1/2" (DN15)
Features	1 & 2 contact versions

Size	Connection	Contacts	Pressure Range	Part number
1/2"/DN15	Threaded	1	0,27-1,03 bar	PS101A
1/2"/DN15	Threaded	2	(4-15 psi)	PS102A

## PMA3 Alarm pressure switch | FM/VdS



Approvals	FM, VdS
Sizes	1/2" (DN15)
Features	2 contacts

Size	Connection	Contacts	Part number
1/2"/DN15	Threaded	2	116512
<b>Kit - 2nd PMA3 Pressure switch &amp; fittings</b>			
1/2"/DN15	Threaded	2	842590

## PS40 Air pressure supervisory switch | UL/FM/VdS/LPCB



Approvals	UL, FM, VdS, LPCB
Sizes	1/2" (DN15)
Features	1 & 2 contact versions

Size	Connection	Contacts	Pressure Range	Part number
1/2"/DN15	Threaded	1	0.7 - 4.1 bar	PS401A
1/2"/DN15		2	(10 - 59 psi)	PS402A

## PS100 Supervisory pressure switch - High pressure | UL/FM/LPCB



Approvals	UL, FM, LPCB
Sizes	1/2" (DN15)
Features	1 contact

Size	Connection	Contacts	Pressure Range	Part number
1/2"/DN15	Threaded	1	1.7 - 12.1 bar (24.6 - 175.5 psi)	PS1002A

# Pressure Switches

## PS120A Supervisory pressure switch - High pressure | UL/FM/CE/LPCB



Approvals	UL, FM, CE, LPCB
Sizes	1/2" (DN15)
Features	1 & 2 contact versions

Size	Connection	Contacts	Pressure Range	Part number
1/2"/DN15	Threaded	1	1.7 - 12.1 bar (24.6 - 175.5 psi)	PS1201A (910029)
1/2"/DN15		2		PS1202A (912974)

## PMS Supervisory pressure switch | VdS



Approvals	VdS
Sizes	1/2" (DN15)
Features	2 contacts

Model	Size	Connection	Pressure	Part number
PMS-3	1/2"/DN15	Threaded	1-9 bar (14.5 - 130.5 psi)	817492
PMS-10	1/2"/DN15	Threaded	4-13 bar (58.0 - 188.5 psi)	817509
PMS-16	1/2"/DN15	Threaded	8-16 bar (116.0 - 232.0 psi)	844744

Monitoring card	
Part number	841486

## PMU Supervisory pressure switch - Monitored | VdS



Approvals	VdS
Sizes	1/2" (DN15)
Features	1 & 2 contacts

Model	Size	Connection	Pressure	Part number
PMU-3	1/2"/DN15	Threaded	1-9 bar (14.5 - 130.5 psi)	792183
PMU-10	1/2"/DN15	Threaded	4-13 bar (58.0 - 188.5 psi)	810564

## PS10-EX Alarm pressure switch | UL/FM/ATEX



Approvals	UL, FM, ATEX
Sizes	1/2" (DN15)
Features	2 contacts, Explosion proof

Size	Connection	Contacts	Part number
1/2"/DN15	Threaded	2	PS10EX



# Pressure Switches

## PS40-EX Air pressure supervisory switch | UL/FM/ATEX



Approvals	UL, FM, ATEX
Sizes	1/2" (DN15)
Connection	Threaded
Features	2 contacts, Explosion proof

Size	Contacts	Part number
1/2"/DN15	2	PS40EX

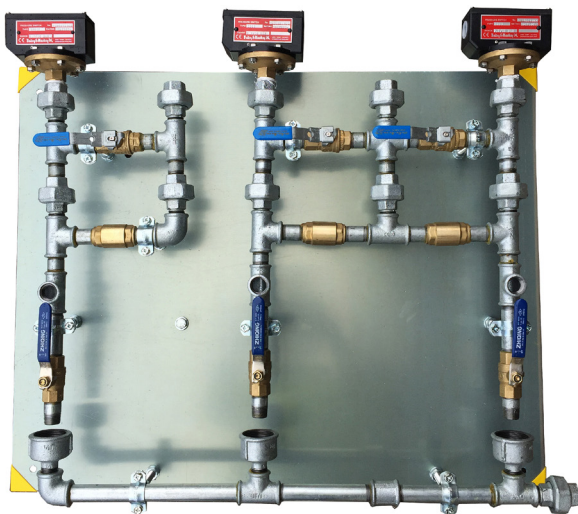
## Jockey pump control pressure switch | FM/VdS

Approvals	FM, VdS
Sizes	1/2" (DN15)
Connection	Threaded
Features	1 contact

Size	Contacts	Part number
1/2"/DN15	1	858360

# Pumpboards

## Pump start initiation board tests pump starting, includes LPCB approved pressure switches



Sizes	1/2" (DN15)
Features	3 configurations

Model	Size	Connection	Part number
Main pump	1/2"/DN15	Threaded	VPB1A
Main pump & Jockey pump	1/2"/DN15	Threaded	VPB2A
Jockey pump	1/2"/DN15	Threaded	VPB3A

# Flow Switches

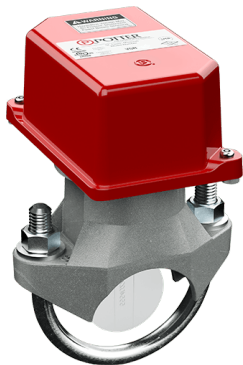
## VSR-S Flow switch for small pipe | UL/CE/LPCB



Approvals	UL, CE, LPCB
Sizes	1" (DN25) - 2" (DN50)
Connection	Threaded
Features	30 second retard

Size	Part number
1"/DN25 - 2"/DN50	VSRF0100

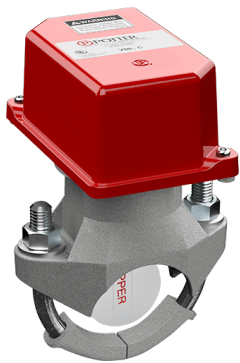
## VSR-EU Flow switch | UL/FM/CE/VdS/LPCB



Approvals	UL, FM, CE, VdS, LPCB
Sizes	2" (DN50) - 8" (DN200)
Connection	U-bolt
Features	30 second retard

Size	Part number
2"/DN50	VSR0200CE
2-1/2"/DN65	VSR0250CE
3"/DN80	VSR0300CE
4"/DN100	VSR0400CE
6"/DN150	VSR0600CE
8"/DN200	VSR0800CE

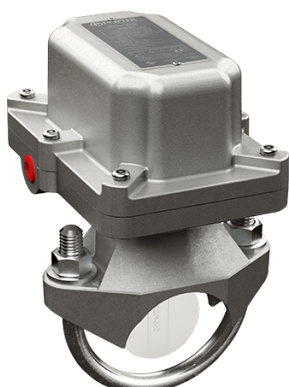
## VSR Flow switch | UL/FM/CE/LPCB



Approvals	UL, FM, CE, LPCB (10" not LPCB approved)
Sizes	2" (DN50) - 10" (DN250)
Connection	U-bolt
Features	90 second retard

Size	Part number
2"/DN50	VSRF0200
2-1/2"/DN65	VSRF0250
3"/DN80	VSRF0300
4"/DN100	VSRF0400
5"/DN125	VSRF0500
6"/DN150	VSRF0600
8"/DN200	VSRF0800
10"/DN250	VSRF1000

## VSR-FEX Explosion proof flow switch | UL/FM



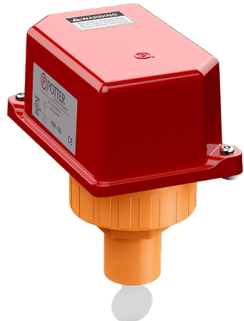
Approvals	UL, FM
Sizes	2" (DN50) - 8" (DN200)
Connection	U-bolt
Features	90 second retard, Explosion proof

Size	Part number
2"/DN50	VSRFEX0200
2-1/2"/DN65	VSRFEX0250
3"/DN80	VSRFEX0300
4"/DN100	VSRFEX0400
6"/DN150	VSRFEX0600
8"/DN200	VSRFEX0800



## Flow Switches

### VSR-SG Flow switch | UL



Approvals	UL		
Sizes	1" (DN25) - 2" (DN50)		
Features	Glued CPVC Socket, 90 second retard		
Size	Installation	Contacts	Part number
1"/DN25 - 2"/DN50	CPVC socket - Glued	1	VSR-SG

### Tamper proof key for VSR & PS pressure switches



Part number
VSRFKEY

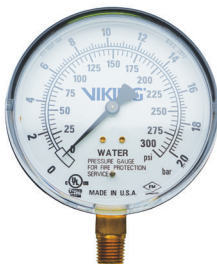
## Pressure Gauges

### Air pressure gauge | UL



Approvals	UL		
Sizes	1/4"(DN8), 100 mm dial		
Features	Silicon free		
Size	Pressure range	Connection	Part number
1/4"/DN8	0 - 5.5 bar (0 - 80 psi)	Threaded	VAIRSF

### Water pressure gauge | UL



Approvals	UL		
Sizes	1/4"(DN8), 100 mm dial		
Features	Silicon free		
Size	Pressure range	Connection	Part number
1/4"/DN8	0 - 20.7 bar (0 - 300 psi)	Threaded	VWATERSF

### Water pressure gauge



Size	Pressure range	Connection	Part number
1/4"/DN8 63 mm dial	0 - 16 bar (0 - 232 psi)	Threaded	111100025
1/2"/DN15 100 mm dial			111100050



# Pressure Gauges

## Glycerine gauge



Size	Pressure range	Connection	Dial size	Part number
3/8"/DN10	0 - 16 bar	Threaded	100 mm	GAU022GLKY0-16
1/2"/DN15	(0 - 232 psi)			789568
1/2"/DN15	0 - 25 bar (0 - 362.5 psi)			848098

## 3/8" x 1/2" No loss connector



Size	Connection	Part number
3/8"/DN10 x 1/2"/DN15	Threaded	GAU022NLC

## Vent valve for 1/4" gauges



Size	Connection	Part number
1/4"/DN8	Threaded - UL	03952A

## Ball valve NKA for 1/2" gauge & optional 1/4" vent valve



Size	Connection	Part number
<b>Ball valve for gauge</b>		
1/2"/DN15	Threaded	819830
<b>Optional vent valve for ball valve 819830</b>		
1/4"/DN8	Threaded	199933

## Water pressure gauge - 2 pointers



Size	Pressure range	Connection	Part number
1/2"/DN15	0 - 16 bar (0 - 232 psi)	Threaded bottom	819828
1/2"/DN15	0 - 16 bar (0 - 232 psi)	Threaded back	126303
1/2"/DN15	0 - 25 bar (0 - 362.5 psi)	Threaded bottom	844618
1/2"/DN15	0 - 25 bar (0 - 362.5 psi)	Threaded back	844619



## Flow Meters

### Model Turbo-Lux 3 | Grooved | FM/VdS/LPCB



Approvals	FM, VdS, LPCB
Sizes	2" (DN50) - 8" (DN200)
Connections	Grooved

Size	Connection	Flow range (LPM)	Part number
2"/DN50	Grooved*	75-375	917790
2-1/2"/DN65		150-750	923212
3"/DN80		220-1,100	917791
3"/DN80		300-1,500	917792
4"/DN100		380-1,900	917793
4"/DN100		460-2,300	917794
4"/DN100		600-3,000	917795
4"/DN100		680-3,400	917796
6"/DN150		1,130-5,650	917797
6"/DN150		1,500-7,500	917798
6"/DN150		1,900-9,500	917799
8"/DN200		2,200-11,000	917800
8"/DN200		3,000-15,000	917801
8"/DN200		3,800-19,000	917802
8"/DN200		4,500-22,500	917803

\* Flanged version available on request, please contact Viking

### Model IFM | Flanged or grooved | LPCB



Approvals	LPCB
Sizes	2" (DN50) - 8" (DN200)
Connections	Flanged & Grooved

Size	Connection	Flow range (LPM)	Part number
2"/DN50	Flanged	150-700	SHU046LPC050F
3"/DN80		300-1,600	SHU046LPC080F
4"/DN100		500-1,500	SHU046LPC100F
6"/DN150		1,500-3,500	SHU046LPC150F
8"/DN200	2,000-15,000	SHU046LPC200F	
2"/DN50	Grooved	150-700	SHU046LPC050G
3"/DN80		300-1,600	SHU046LPC080G
4"/DN100		500-1,500	SHU046LPC100G
6"/DN150		1,500-3,500	SHU046LPC150G
8"/DN200		2,000-15,000	SHU046LPC200G

# Flow Meters

## Model 10W Electromagnetic flow meter | Flanged PN16

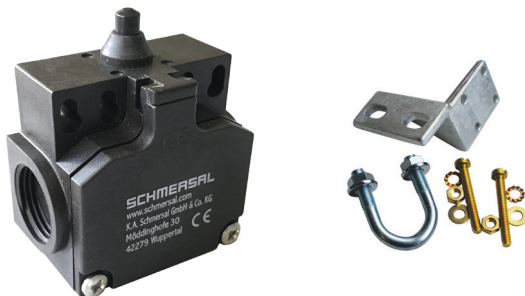


Approvals	FM, VdS
Sizes	6" (DN150) - 8" (DN200)
Connections	Flanged PN16

Size	Connection	Flow range (LPM)	Part number
<b>FM Approved</b>			
6"/DN150	Flanged	335-10,000	10W1F-UC0A1RA0B4AA
8"/DN200		585-18,335	10W2H-UD0A1RA0B4AA
<b>VdS Approved</b>			
6"/DN150	Flanged	335-10,000	10W1F-UC0AVAA0B4AA
8"/DN200		585-18,335	10W2H-UD0AVAA0A4AA

# Monitoring

## Ball valve monitoring kit



Sizes	1/2" (DN15) - 2" (DN50)
Features	Includes switch for use with FMZ panel, bracket and nuts and bolts. For other panels use kit below plus switch 828482

Size	Part number
1/2"/DN15	763352
3/4"/DN20	763698
1"/DN25	792456
1-1/4"/DN32	769822
1-1/2"/DN40	792444
2"/DN50	769834

## Bracket for ball valve monitoring kit



Sizes	1/2" (DN15) - 2" (DN50)
Features	Includes nuts & bolts. Fits monitoring switch 880214 & 828482

Size	Part number
1/2"/DN15	812196
3/4"/DN20	789982
1"/DN25	812202
1-1/4"/DN32	789994
1-1/2"/DN40	812214
2"/DN50	790009



# Monitoring

## Monitoring switch OS&Y gate valve | UL/FM/CE



Approvals	UL, FM, CE
Features	Tamper resistant, 1 or 2 contacts

SPDT Contacts	Part number
1	OSYSU1
2	OSYSU2

## Supervisory switch for use with butterfly valves and post indicators | UL/FM/CE



Approvals	UL, FM, CE
Features	2 SPDT contacts

Part number
PCVS2

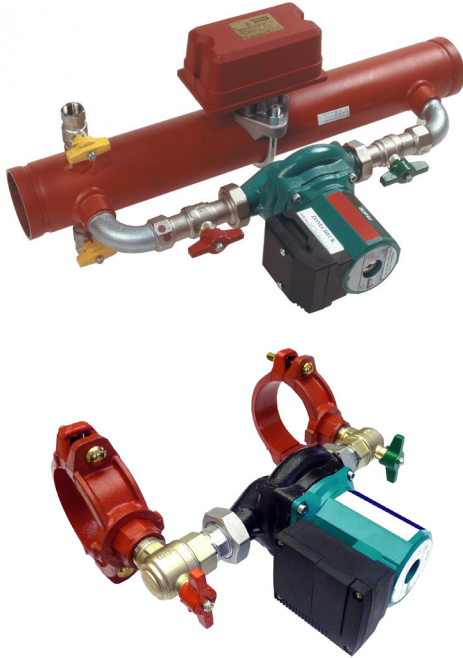
## Further monitoring accessories



Model	Additional info	Part number
Monitoring switch for ball valves and gate valves	-	828482
	For use with FMZ panel	880214
Monitoring ball valve 3/2-way	-	841243
Model E Float switch for tank level monitoring	For use inside tank	779248
Model SR Float switch for tank level monitoring	For use outside tank	790447

# Zonecheck

## Zonecheck 450 - without key switch | UL/FM/VdS/LPCB



Approvals	UL, FM, VdS, LPCB
Sizes	2" (DN50) - 8" (DN200)

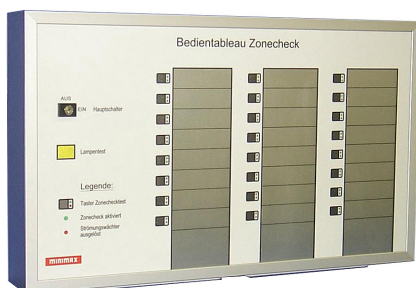
Model	Size	Part number
450 Left	2"/DN50	850830
	2-1/2"/DN65	850831
	3"/DN80	850832
	4"/DN100	850833
	6"/DN150	850834
450 Right	8"/DN200	850835
	2"/DN50	850836
	2-1/2"/DN65	850837
	3"/DN80	850983
	4"/DN100	850984
Retrofit	6"/DN150	850985
	8"/DN200	850986
	2"/DN50	850845
	2-1/2"/DN65	850846
	3"/DN80	850847
	4"/DN100	850848
	6"/DN150	850849

## Zonecheck - Key switch



Item	Part number
Enclosure for wall mounting	846316

## Zonecheck - Operating panel



Model	Part number
BTZ-8 II, for 8 Zonechecks	845638
BTZ-16 II, for 16 Zonechecks	845639
BTZ-24 II, for 24 Zonechecks	845640
BTZ-32 II, for 32 Zonechecks	845641

## Zonecheck - Parts and accessories

Item	Part number
Zonecheck - Replacement key	850989
Zonecheck - Replacement pump Zonecheck	850987
Zonecheck - Flat gasket for pump union Zonecheck	850990





## Europe, Middle East & Africa

### BENELUX

**Viking SupplyNet bv**  
Eekboerstraat 28b-3  
NL-7575 AX Oldenzaal  
Netherlands  
Tel.: +31 (0)541 573233  
vikingnetherlands@viking-emea.com

### CENTRAL & EASTERN EUROPE

**Viking GmbH**  
Industriestr. 10/12  
D-23840 Bad Oldesloe  
Germany  
Tel.: +49 (0)4531 803 8087  
vikinggermany@viking-emea.com

### FRANCE

**Sprinkler Viking France S.à r.l.**  
Centre d'Affaires CESCO  
4, rue Marconi  
BP 25180  
F-57075 Metz Cedex 03  
France  
Tel.: +33 (0)800 10 29 23  
vikingfrance@viking-emea.com

### IBÉRICA

**Viking Sprinkler S.A.**  
Calle Picos de Europa 4A  
San Fernando de Henares  
E-28830 Madrid  
Spain  
Tel.: +34 91 677 8352  
vikingiberica@viking-emea.com

### ITALY

**Viking Italia S.r.l.**  
Via Pavia, 76  
I-27042 Bressana Bottarone (PV)  
Italy  
Tel.: +39-(0)2- 30550778  
vikingitaly@viking-emea.com

### MIDDLE EAST

**Viking Arabia FZE**  
LOB 19 Office #2007  
Post Box No. 17531  
Jebel Ali Free Zone, Dubai  
United Arab Emirates  
Tel.: +971 (0)4 8895 561  
vikingdubai@viking-emea.com

### NORDIC

**Viking Nordic AB**  
Staffans Väg 5  
S-192 78 Sollentuna  
Sweden  
Tel.: +46 (0)8 594 415 90  
vikingsweden@viking-emea.com

### POLAND

**Viking SupplyNet Sp. z o.o.**  
ul. Żelazna 59  
PL-00 848 Warsaw  
Poland  
Tel.: +48 22 103 30 54  
vikingpoland@viking-emea.com

### ROMANIA & BULGARIA

**Viking Romania S.r.l.**  
Strada Vulturilor 18-18A, cam 3  
The LOBBY  
RO-030855 Bucharest  
Romania  
Tel.: +40 21 311 51 48  
vikingromania@viking-emea.com

### TURKEY

**Viking Turkey Yangın Korunum Sistemleri Ticaret A.Ş.**  
Sahrayıcedit Mah. Halk Sokak  
Golden Plaza C Blok No:29, Kat:4, Daire:8  
Sahrayı Cedit, Kadıköy - 34734 İstanbul  
Turkey  
Tel.: +90 (0)216 403 18 00  
vikingturkey@viking-emea.com

### UK & IRELAND

**Viking SupplyNet Ltd.**  
Unit 2 - Byram House, Newborn Court  
Chapel Street  
Epworth DN9 1HQ  
United Kingdom  
Tel.: +44 (0)1427 871 000  
vikinguk@viking-emea.com

For further information,  
please visit  
[www.viking-emea.com](http://www.viking-emea.com)



For further information, please contact your local Viking sales office or refer to the technical documentation.  
The contents of this publication are subject to modifications without notice.

Photo  
Cover: Fotolia © Studio Gi

Trusted above all.

Viking S.A. | 21, Z.I. Haneboesch, L-4562 Differdange / Nieder Korn, Luxembourg | Tel.: +352 58 37 37 - 1, vikinglux@viking-emea.com

