



## Dry Systems

Quick Reference Guide | EMEA





# Introduction to Dry Systems

Viking is renowned for the development, manufacturing, sales and distribution of excellent fire protection technologies and has been a dependable partner in fire protection for many decades.

The broad product portfolio encompasses innovative and proven system components for water, foam and gas extinguishing systems as well as fire detection systems and is a reflection of Viking's unwavering focus on providing customers with the finest products and highest level of support.

Through Viking's dedicated and knowledgeable customer service, installers of fixed fire protection systems have access to those quality products and can place their trust in the professional and dedicated support services provided by Viking employees. From the smallest project to the largest endeavour, Viking is their single-point partner with the goal to provide the right material whenever and wherever needed.

Viking is passionate about fire protection and committed to the growth of the fixed fire protection industry. As Viking is completely focused and dedicated to this market, customers can have confidence that Viking has the expertise that they need to be successful. They can count on Viking's resources and technical expertise to help them whenever they have a challenge to overcome. And they can be sure to find the right product or solution for their project with the necessary approval or accreditation.

This quick reference guide provides an overview of Viking's comprehensive range of dry systems components. Besides access to those products, customers benefit from a market leading technical support team across Europe and the Middle East, which also holds regular technical training courses on water, foam, gas and detection systems, products and maintenance.

Learn more at [www.viking-emea.com](http://www.viking-emea.com).

## Table of contents

DRV-1 Dry Valve Systems with or without Accelerator	3
Dry Valve Systems without Accelerator	4
Dry Valve Systems with Accelerator	6
Town Water Connection	8
Dry Valves	9
F-1 & F-2 Trim Components	10
TMX Trim Components	11
Compressors	14
Exhauster	15

**For all applicable approvals, please refer to the technical documentation or contact your local Viking sales office.**

# DRV-1 Dry Valve Systems with or without Accelerator

DRV-1 | Dry alarm valve with base trim | UL/FM/CE/LPCB | 17 bar (250 psi) working pressure



Approvals	UL, FM, CE, LPCB
Max. working pressure	17.2 bar (250 psi)
Material (Body)	Ductile iron
Sizes	3" (DN80), 4" (DN100) & 6" (DN150)
Types	Groove-Groove
Finishes	Painted red with galvanised trim

### Base valve & trim: Valve sizes & accelerator versions

Version	Size		Part Number
	Nominal	mm	
Without accelerator	DN80	88.9	A/DRV1-3GG
	DN100	114.3	A/DRV1-4GG
	DN150	165.1	A/DRV1-6GG165
	DN150	168.3	A/DRV1-6GG168
With accelerator	DN80	88.9	A/DRV1-3GG-A
	DN100	114.3	A/DRV1-4GG-A
	DN150	165.1	A/DRV1-6GG165-A
	DN150	168.3	A/DRV1-6GG168-A

### Options for the DRV-1

Option	Function	Part Number
Accelerator kit	Adds an accelerator to an existing valve (included in the 'with accelerator' versions above)	DRV1-AK
Monitoring kit	Adds an PS401A air supervisory switch to monitor the air supply	DRV1-MK
Air supply kit	Limits flow from large capacity compressors (one required for each valve)	DRV1-AS
Pressure relief valve	Limits maximum air pressure in system. For water supply pressures of:	
	up to 10 bar (145 psi)	131054
	10 to 12 bar (145 - 174 psi)	849833
	12 to 14 bar (174 - 203 psi)	849834
	14 to 17 bar (203 - 247 psi)	849835

DRV-1 | Alarm trim UL/FM/CE/LPCB | Includes PS10 alarm pressure switch and comes boxed with base valve

### Alarm trim

No.	Trim	Part number
1	UL & FM	19420
2	Holland	19421
3	France (APSAD)	19418
4	UK (LPCB)	19416
5	Germany	19417
6	Sweden & Finland	19419
7	Norway	19422D



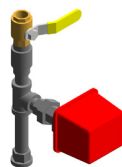
1 - UL/FM



2 - Holland



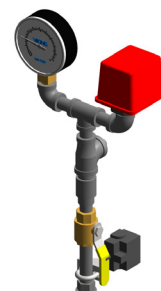
3 - France (APSAD)



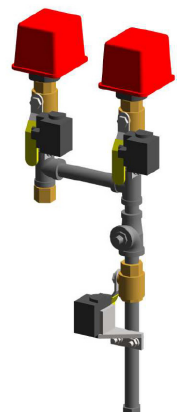
4 - UK (LPCB)



5 - Germany



6 - Sweden & Finland



7 - Norway



# Dry Valve Systems with Accelerator

TMX | Partly preassembled & Preassembled | FM  
Includes accelerator | Un-monitored



Approvals	FM
Max. working pressure	16.0 bar (232 psi)
Material (Body)	Ductile iron
Sizes	3" (DN80) - 6" (DN150)
Connection	Groove-Groove
Finishes	Painted red

Partly preassembled		
Size	Connection	Part number
3"/DN80	Groove - Groove	933553
4"/DN100		933554
6"/DN150		933555
Preassembled		
Size	Connection	Part number
3"/DN80	Groove - Groove	934734
4"/DN100		934735
6"/DN150		934736

# Dry Valve Systems with Accelerator

TMX | Partly preassembled & Preassembled | VdS / CE  
Includes accelerator | Un-monitored



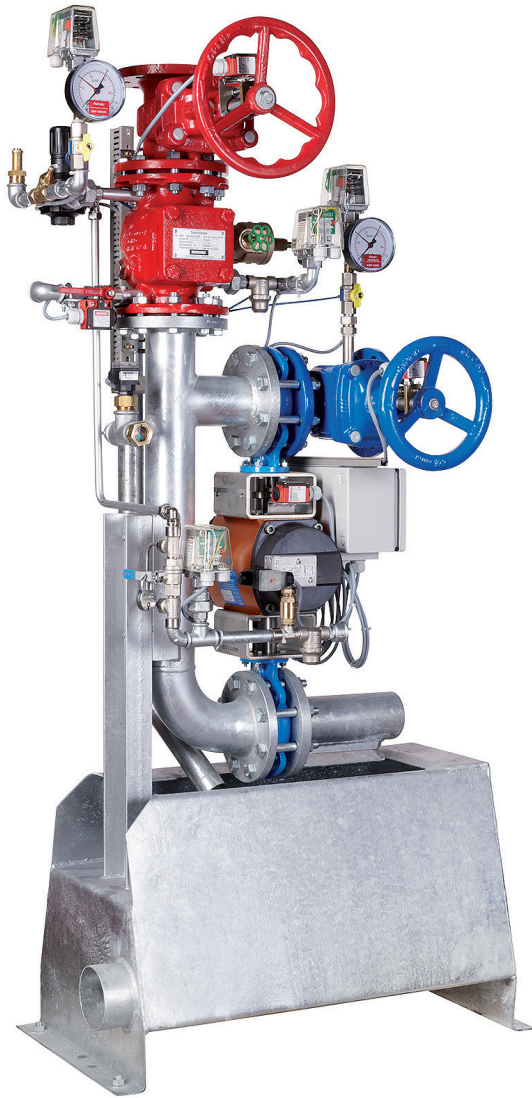
Approvals	VdS, CE
Max. working pressure	16.0 bar (232 psi)
Material (Body)	Ductile iron
Sizes	3" (DN80) - 6" (DN150)
Connection	Groove-Groove
Finishes	Painted red

Partly preassembled		
Size	Connection	Part number
3"/DN80	Groove - Groove	933550
4"/DN100		933551
6"/DN150		933552
Preassembled		
Size	Connection	Part number
3"/DN80	Groove - Groove	934731
4"/DN100		934732
6"/DN150		934733



# Town Water Connection

## DAS Town water connection | VdS/DVGW



Approvals	VdS, DVGW
Max. working pressure	12.0 bar (175 psi)
Material (Body)	Ductile iron
Sizes	3" (DN80)
Types	Groove-Groove
Finishes	Painted red

Size	Connection	Type	Configuration	Part number
3"/DN80	Groove	PN16	Right feed for dry alarm	862422
3"/DN80	Groove	PN16	Left feed for dry alarm	862434



The Town water connection includes a pre-programmed fire extinguishing panel FMZ 5000

# Dry Valves

## TMX dry valves | FM/CE/VdS



Approvals	FM, CE & VdS
Max. working pressure	16.0 bar (232 psi)
Material (Body)	Ductile iron
Sizes	3" (DN80) - 6" (DN150)
Connection	Groove-Groove
Finishes	Painted red

Size	Connection	Part number
3"/DN80	Groove-Groove	933544
4"/DN100		933545
6"/DN150 (168 mm)		933546



## F-1 & F-2 Trim Components

Product	Size	Connection	Part number
 Accelerator Model E-1	1/2"/DN15	Threaded	08055
 Anti-flood device Model B-1	1/2"/DN15	Threaded	08061
 Anti-flood device Model B-2 (VdS)	1/2"/DN15	Threaded	09391
 Accelerator Model E-1 & Anti-flood device Model B-2 Anti-flood package (excluding nipples and fittings)	1/2"/DN15	Threaded	08116
 Accelerator Model E-1 & Anti-flood device Model B-2 Anti-flood trim package (excluding E-1 & B-2)	1/2"/DN15	Threaded	08264
 Accelerator Model D-2	1/2"/DN15	Threaded	09881
 Accelerator Model D-2 trim package (excluding E-1 & B-2)	1/2"/DN15	Threaded	09730
 Dehydrator	1/2"/DN15	Threaded	16854
Extra dessicant	-	-	16855
 Air maintenance device Model D-2 - with trim	-	-	07459
 Air maintenance device Model D-2	-	-	02280C
 Float check valve	-	-	12116
 Ball valve (UL/FM) - R850	3/8"/DN10	BSP/NPT	R850D0037
	1/2"/DN15	BSP/NPT	R850D0050
	3/4"/DN20	BSP/NPT	R850D0075
	1"/DN25	BSP	R850D0100
	1-1/4"/DN32	BSP	R850D0125
	1-1/2"/DN40	BSP	R850D0150
	2"/DN50	BSP	R850D0200
	2-1/2"/DN65	BSP	R850D0250
3"/DN80	BSP	R850D0300	
4"/DN100	BSP	R850D0400	
 Water gauge 0-20.7 bar (0-300 psi)	1/4"/DN8	Threaded	VWATERSF



# F-1 & F-2 Trim Components

Product	Size	Connection	Part number
	1/2"/DN15	Threaded	VWAIRSF
	1/4"/DN8	Threaded	03952A
	1/2"/DN15	Threaded	06980A
	1/2"/DN15	Threaded	KT403W050
	1/2"/DN15	Threaded	08431
	-	-	10732
	-	-	828482
	-	-	812196
	-	-	1450018
	-	-	01019B



## F-1 & F-2 Trim Components

	Product	Size	Model	Part number
	Clapper rubber	3"/DN80 & 4"/DN100	F-1 & F-2	07651
		6"/DN150		08487
	Air plate rubber	3"/DN80 & 4"/DN100	F-1 & F-2	07650
6"/DN150		08477		
Coverplate gasket	All	F-1 & F-2	04187B	
Clapper rubber & coverplate gasket kit		3"/DN80 & 4"/DN100	F-1 & F-2	LL-MKDVF140
		6"/DN150		LL-MKDVF160
Clapper kit - Contains clapper assembly, screws, rubber retainer & clapper rubber		3"/DN80 & 4"/DN100	F-1 & F-2	08234
		6"/DN150		08490
Member assembly kit - Contains clapper kit and parts for replacing air plate		3"/DN80 & 4"/DN100	F-1 & F-2	14027
		6"/DN150		14028
Accelerator repair kit - Contains gaskets, diaphragm, screws, grease and gauge		-	E-1	12503
		-	D-2	14834
Accelerator anti-flood kit - Contains replacement plates		-	D-2	06057A
Anti-flood device repair kit - Contains diaphragms, screws, piston & spring		-	B-1	12528

# TMX Trim Components

	Product	Size	Connection	Model	Part number
	Accelerator (VdS)	-	-	SE2	816890
	Accelerator (FM)	-	-	SE2	840174
	Monitoring switch	-	-	-	828482
	Monitoring switch, for use with FMZ panel	-	-	-	880214
	Monitoring switch bracket	-	-	-	812196
	Ball valve - 2/3 way	-	-	-	841218
	Restricted air bypass	-	-	-	787511
	Water/Compressed air pressure gauge 16 bar (232 psi)	-	-	ER	126303
	Water/Compressed air pressure gauge 16 bar (232 psi)	-	-	AR	819828
	Sealing set - Contains clapper rubber, coverplate gasket, o-rings & wrench	3"/DN80	-	TMX	840314
		6"/DN150			840429



# Compressors

## Tank mounted | 50 litre



Type	Part number
1.5 kW / 2 hp - 230V / 50 Hz	848213
2.2 kW / 3 hp - 230V / 50 Hz	848214

## Riser mounted



Type	Part number
0.25 kW / 1/3 hp - 230 V / 50 Hz	3LBD29M303X

## Base mounted



Type	Part number
0.75 kW / 1 hp - 230 V / 50 Hz With preset relief valve (4.6 bar)	KCT110G
1.5 kW / 2 hp - 230 V / 50 Hz With preset relief valve (4.6 bar)	KCT230G

# Exhauster | SEVMX



Approvals	VdS
Max. working pressure	10 bar (145 psi)
Material (Body)	Ductile iron & aluminium
Sizes	DN80
Finishes (Valve)	Painted black

Type	Part number
Unmonitored	841175
Monitored	841176





## Europe, Middle East & Africa

### BENELUX

**Viking SupplyNet bv**  
Eekboerstraat 28b-3  
NL-7575 AX Oldenzaal  
Netherlands  
Tel.: +31 (0)541 573233  
vikingnetherlands@viking-emea.com

### CENTRAL & EASTERN EUROPE

**Viking GmbH**  
Industriestr. 10/12  
D-23840 Bad Oldesloe  
Germany  
Tel.: +49 (0)4531 803 8087  
vikinggermany@viking-emea.com

### FRANCE

**Sprinkler Viking France S.à r.l.**  
Centre d'Affaires CESCO  
4, rue Marconi  
BP 25180  
F-57075 Metz Cedex 03  
France  
Tel.: +33 (0)800 10 29 23  
vikingfrance@viking-emea.com

### IBÉRICA

**Viking Sprinkler S.A.**  
Calle Picos de Europa 4A  
San Fernando de Henares  
E-28830 Madrid  
Spain  
Tel.: +34 91 677 8352  
vikingiberica@viking-emea.com

### ITALY

**Viking Italia S.r.l.**  
Via Pavia, 76  
I-27042 Bressana Bottarone (PV)  
Italy  
Tel.: +39-(0)2- 30550778  
vikingitaly@viking-emea.com

### MIDDLE EAST

**Viking Arabia FZE**  
LOB 19 Office #2007  
Post Box No. 17531  
Jebel Ali Free Zone, Dubai  
United Arab Emirates  
Tel.: +971 (0)4 8895 561  
vikingdubai@viking-emea.com

### NORDIC

**Viking Nordic AB**  
Staffans Väg 5  
S-192 78 Sollentuna  
Sweden  
Tel.: +46 (0)8 594 415 90  
vikingsweden@viking-emea.com

### POLAND

**Viking SupplyNet Sp. z o.o.**  
ul. Żelazna 59  
PL-00 848 Warsaw  
Poland  
Tel.: +48 22 103 30 54  
vikingpoland@viking-emea.com

### ROMANIA & BULGARIA

**Viking Romania S.r.l.**  
Strada Vulturilor 18-18A, cam 3  
The LOBBY  
RO-030855 Bucharest  
Romania  
Tel.: +40 21 311 51 48  
vikingromania@viking-emea.com

### TURKEY

**Viking Turkey Yangın Korunum Sistemleri Ticaret A.Ş.**  
Sahrayıcedit Mah. Halk Sokak  
Golden Plaza C Blok No:29, Kat:4, Daire:8  
Sahrayı Cedit, Kadıköy - 34734 İstanbul  
Turkey  
Tel.: +90 (0)216 403 18 00  
vikingturkey@viking-emea.com

### UK & IRELAND

**Viking SupplyNet Ltd.**  
Unit 2 - Byram House, Newborn Court  
Chapel Street  
Epworth DN9 1HQ  
United Kingdom  
Tel.: +44 (0)1427 871 000  
vikinguk@viking-emea.com

For further information,  
please visit  
[www.viking-emea.com](http://www.viking-emea.com)



For further information, please contact your local Viking sales office or refer to the technical documentation.  
The contents of this publication are subject to modifications without notice.

Photo  
Cover: Shutterstock © Baloncici

Trusted above all.



Viking S.A. | 21 Z.I. Haneboesch, L-4562 Differdange / Niederkorn, Luxembourg | Tel.: +352 58 37 37 - 1, vikinglux@viking-emea.com