



Trusted above all.



Grooved Products

Quick Reference Guide | EMEA



FIREKING 



Introduction to Grooved Products

Viking is renowned for the development, manufacturing, sales and distribution of excellent fire protection technologies and has been a dependable partner in fire protection for many decades.

The broad product portfolio encompasses innovative and proven system components for water, foam and gas extinguishing systems as well as fire detection systems and is a reflection of Viking's unwavering focus on providing customers with the finest products and highest level of support.

Through Viking's dedicated and knowledgeable customer service, installers of fixed fire protection systems have access to those quality products and can place their trust in the professional and dedicated support services provided by Viking employees. From the smallest project to the largest endeavour, Viking is their single-point partner with the goal to provide the right material whenever and wherever needed.

Viking is passionate about fire protection and committed to the growth of the fixed fire protection industry. As Viking is completely focused and dedicated to this market, customers can have confidence that Viking has the expertise that they need to be successful. They can count on Viking's resources and technical expertise to help them whenever they have a challenge to overcome. And they can be sure to find the right product or solution for their project with the necessary approval or accreditation.

This quick reference guide provides an overview of Viking's comprehensive range of grooved products. Besides access to those products, customers benefit from a market leading technical support team across Europe and the Middle East, which also holds regular technical training courses on water, foam, gas and detection systems, products and maintenance.

Learn more at www.viking-emea.com.

Table of contents

Grooved couplings	3
<i>Rigid coupling</i>	3
<i>Rigid coupling Angle Style</i>	3
<i>Flexible coupling</i>	4
<i>Flexible coupling Heavy duty</i>	4
<i>Reducing coupling</i>	5
Grooved fittings	5
<i>Elbow</i>	5
<i>Equal tee</i>	7
<i>Reducing tee</i>	8
<i>Cross</i>	12
<i>End cap</i>	12
<i>Flange adapter</i>	14
<i>Reducer</i>	17
<i>Adapter nipple</i>	24
<i>End all</i>	25
Gasketed fittings	26
<i>Sprinkler tee</i>	26
<i>Mechanical tee</i>	27

For all applicable approvals, please refer to the technical documentation or contact your local Viking sales office.

Grooved Couplings

Rigid coupling | VK-RC



- From 33.7 mm to 323.9 mm
- UL and FM approvals (depending on specific size)
- Available in painted red and galvanised (Epoxy red available on request)



Size (mm)	Max. working pressure (bar)		Approvals		Part number	
	UL	FM	UL	FM	Painted red	Galvanised
33.7	34.5	34.5	▪	▪	VK-RC-034P	VK-RC-034G
42.4	34.5	34.5	▪	▪	VK-RC-042P	VK-RC-042G
48.3	34.5	34.5	▪	▪	VK-RC-048P	VK-RC-048G
60.3	34.5	34.5	▪	▪	VK-RC-060P	VK-RC-060G
73.0	34.5	34.5	▪	▪	VK-RC-073P	VK-RC-073G
76.1	20.7	20.7	▪	▪	VK-RC-076P	VK-RC-076G
88.9	34.5	34.5	▪	▪	VK-RC-089P	VK-RC-089G
108.0	20.7	20.7	▪	▪	VK-RC-108P	VK-RC-108G
114.3	34.5	34.5	▪	▪	VK-RC-114P	VK-RC-114G
133.0	20.7	20.7	▪	▪	VK-RC-133P	VK-RC-133G

Size (mm)	Max. working pressure (bar)		Approvals		Part number	
	UL	FM	UL	FM	Painted red	Galvanised
139.7	20.7	20.7	▪	▪	VK-RC-139P	VK-RC-139G
141.3	20.7	20.7	▪	▪	VK-RC-141P	VK-RC-141G
159.0	20.7	20.7	▪	▪	VK-RC-159P	VK-RC-159G
165.1	20.7	20.7	▪	▪	VK-RC-165P	VK-RC-165G
168.3	20.7	20.7	▪	▪	VK-RC-168P	VK-RC-168G
216.4	20.7	-	▪	-	VK-RC-216P	VK-RC-216G
219.1	20.7	20.7	▪	▪	VK-RC-219P	VK-RC-219G
273.0	20.7	20.7	▪	▪	VK-RC-273P	VK-RC-273G
323.9	20.7	20.7	▪	▪	VK-RC-324	VK-RC-324G

Rigid coupling - Angle Style | VK-RCA



- From 42.4 mm to 323.9 mm
- UL and FM approvals (depending on specific size)
- Available in painted red and galvanised (Epoxy red available on request)



Size (mm)	Max. working pressure (bar)		Approvals		Part number	
	UL	FM	UL	FM	Painted red	Galvanised
42.4	27.6	27.6	▪	▪	VK-RCA-042P	VK-RCA-042G
48.3	27.6	27.6	▪	▪	VK-RCA-048P	VK-RCA-048G
60.3	27.6	27.6	▪	▪	VK-RCA-060P	VK-RCA-060G
73.0	27.6	27.6	▪	▪	VK-RCA-073P	VK-RCA-073G
76.1	20.7	20.7	▪	▪	VK-RCA-076P	VK-RCA-076G
88.9	27.6	27.6	▪	▪	VK-RCA-089P	VK-RCA-089G
108.0	20.7	20.7	▪	▪	VK-RCA-108P	VK-RCA-108G
114.3	27.6	27.6	▪	▪	VK-RCA-114P	VK-RCA-114G
133.0	20.7	20.7	▪	▪	VK-RCA-133P	VK-RCA-133G
139.7	20.7	20.7	▪	▪	VK-RCA-139P	VK-RCA-139G

Size (mm)	Max. working pressure (bar)		Approvals		Part number	
	UL	FM	UL	FM	Painted red	Galvanised
141.3	20.7	20.7	▪	▪	VK-RCA-141P	VK-RCA-141G
159.0	20.7	20.7	▪	▪	VK-RCA-159P	VK-RCA-159G
165.1	20.7	20.7	▪	▪	VK-RCA-165P	VK-RCA-165G
168.3	20.7	20.7	▪	▪	VK-RCA-168P	VK-RCA-168G
216.3	20.7	20.7	▪	-	VK-RCA-216P	VK-RCA-216G
219.1	20.7	20.7	▪	▪	VK-RCA-219P	VK-RCA-219G
267.4	20.7	20.7	▪	-	VK-RCA-267P	VK-RCA-267G
273.0	20.7	20.7	▪	▪	VK-RCA-273P	VK-RCA-273G
318.5	20.7	20.7	▪	-	VK-RCA-318P	VK-RCA-318G
323.9	20.7	20.7	▪	▪	VK-RCA-324P	VK-RCA-324G



Grooved Couplings

Flexible coupling | VK-FC



- From 33.7 mm to 323.9 mm
- UL and FM approvals (depending on specific size)
- Available in painted red and galvanised (Epoxy red available on request)



Size (mm)	Max. working pressure (bar)		Approvals		Part number	
	UL	FM	UL	FM	Painted red	Galvanised
33.7	34.5	34.5	■	■	VK-FC-034P	VK-FC-034G
42.4	34.5	34.5	■	■	VK-FC-042P	VK-FC-042G
48.3	34.5	34.5	■	■	VK-FC-048P	VK-FC-048G
60.3	34.5	34.5	■	■	VK-FC-060P	VK-FC-060G
73.0	34.5	34.5	■	■	VK-FC-073P	VK-FC-073G
76.1	20.7	20.7	■	■	VK-FC-076P	VK-FC-076G
88.9	34.5	34.5	■	■	VK-FC-089P	VK-FC-089G
108.0	20.7	20.7	■	■	VK-FC-108P	VK-FC-108G
114.3	20.7	20.7	■	■	VK-FC-114P	VK-FC-114G
133.0	20.7	20.7	■	■	VK-FC-133P	VK-FC-133G
139.7	20.7	20.7	■	■	VK-FC-139P	VK-FC-139G

Size (mm)	Max. working pressure (bar)		Approvals		Part number	
	UL	FM	UL	FM	Painted red	Galvanised
141.3	20.7	20.7	■	■	VK-FC-141P	VK-FC-141G
159.0	20.7	20.7	■	■	VK-FC-159P	VK-FC-159G
165.1	20.7	20.7	■	■	VK-FC-165P	VK-FC-165G
168.3	20.7	20.7	■	■	VK-FC-168P	VK-FC-168G
216.3	20.7	-	■	-	VK-FC-216P	VK-FC-216G
219.1	20.7	20.7	■	■	VK-FC-219P	VK-FC-219G
267.4	20.7	-	■	-	VK-FC-267P	VK-FC-267G
273.0	20.7	20.7	■	■	VK-FC-273P	VK-FC-273G
318.5	20.7	-	■	-	VK-FC-318P	VK-FC-318G
323.9	20.7	20.7	■	■	VK-FC-324P	VK-FC-324G

Flexible coupling | Heavy-duty | VK-FCH



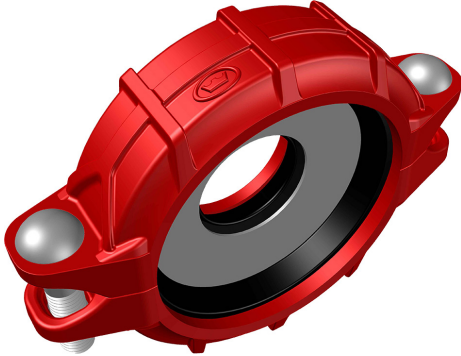
- From 60.3 mm to 323.9 mm
- UL and FM approvals
- Available in painted red and galvanised (Epoxy red available on request)




Size (mm)	Max. working pressure (bar)		Approvals		Part number	
	UL	FM	UL	FM	Painted red	Galvanised
60.3	34.5	34.5	■	■	VK-FCH-060P	VK-FCH-060G
88.9	34.5	34.5	■	■	VK-FCH-089P	VK-FCH-089G
114.3	34.5	34.5	■	■	VK-FCH-114P	VK-FCH-114G
168.3	34.5	34.5	■	■	VK-FCH-168P	VK-FCH-168G
219.1	27.6	27.6	■	■	VK-FCH-219P	VK-FCH-219G
273	27.6	27.6	■	■	VK-FCH-273P	VK-FCH-273G
323.9	27.6	27.6	■	■	VK-FCH-324P	VK-FCH-324G

Grooved Couplings

Reducing coupling | VK-DC



- From 60.3 mm x 48.3 mm to 219.1 mm x 168.3 mm
- UL and FM approvals 
- Available in painted red and galvanised (Epoxy red available on request)


Size (mm)	Max. working pressure (bar)		Approvals		Part number	
	UL	FM	UL	FM	Painted red	Galvanised
60.3 x 48.3	20.7	20.7	■	■	VK-DC-060048P	VK-DC-060048G
73.0 x 48.3	20.7	20.7	■	■	VK-DC-073048P	VK-DC-073048G
73.0 x 60.3	20.7	20.7	■	■	VK-DC-073060P	VK-DC-073060G
76.1 x 48.3	20.7	20.7	■	■	VK-DC-076048P	VK-DC-076048G
76.1 x 60.3	20.7	20.7	■	■	VK-DC-076060P	VK-DC-076060G
88.9 x 48.3	20.7	20.7	■	■	VK-DC-089048P	VK-DC-089048G
88.9 x 60.3	20.7	20.7	■	■	VK-DC-089060P	VK-DC-089060G
88.9 x 73.0	20.7	20.7	■	■	VK-DC-089073P	VK-DC-089073G
88.9 x 76.1	20.7	20.7	■	■	VK-DC-089076P	VK-DC-089076G

Size (mm)	Max. working pressure (bar)		Approvals		Part number	
	UL	FM	UL	FM	Painted red	Galvanised
114.3 x 48.3	20.7	20.7	■	■	VK-DC-114048P	VK-DC-114048G
114.3 x 60.3	20.7	20.7	■	■	VK-DC-114060P	VK-DC-114060G
114.3 x 73.0	20.7	20.7	■	■	VK-DC-114073P	VK-DC-114073G
114.3 x 76.1	20.7	20.7	■	■	VK-DC-114076P	VK-DC-114076G
114.3 x 88.9	20.7	20.7	■	■	VK-DC-114089P	VK-DC-114089G
168.3 x 88.9	20.7	20.7	■	■	VK-DC-168089P	VK-DC-168089G
168.3 x 114.3	20.7	20.7	■	■	VK-DC-168114P	VK-DC-168114G
219.1 x 168.3	20.7	20.7	■	■	VK-DC-219168P	VK-DC-219168G

Grooved Fittings

Elbow | 90° | VK-E90



- From 33.7 mm to 323.9 mm
- UL and FM approvals 
- Available in painted red and galvanised (Epoxy red available on request)

Size (mm)	Max. working pressure (bar)		Approvals		Part number	
	UL	FM	UL	FM	Painted red	Galvanised
33.7	27.6	34.5	■	■	VK-E90-034P	VK-E90-034G
42.4	27.6	34.5	■	■	VK-E90-042P	VK-E90-042G
48.3	27.6	34.5	■	■	VK-E90-048P	VK-E90-048G
60.3	27.6	34.5	■	■	VK-E90-060P	VK-E90-060G
73.0	27.6	34.5	■	■	VK-E90-073P	VK-E90-073G
76.1	27.6	34.5	■	■	VK-E90-076P	VK-E90-076G
88.9	27.6	34.5	■	■	VK-E90-089P	VK-E90-089G
108.0	27.6	34.5	■	■	VK-E90-108P	VK-E90-108G
114.3	27.6	34.5	■	■	VK-E90-114P	VK-E90-114G
133.0	20.7	27.6	■	■	VK-E90-133P	VK-E90-133G

Size (mm)	Max. working pressure (bar)		Approvals		Part number	
	UL	FM	UL	FM	Painted red	Galvanised
139.7	20.7	27.6	■	■	VK-E90-139P	VK-E90-139G
141.3	20.7	27.6	■	■	VK-E90-141P	VK-E90-141G
159.0	20.7	27.6	■	■	VK-E90-159P	VK-E90-159G
165.1	20.7	27.6	■	■	VK-E90-165P	VK-E90-165G
168.3	20.7	27.6	■	■	VK-E90-168P	VK-E90-168G
219.1	20.7	20.7	■	■	VK-E90-219P	VK-E90-219G
273.0	20.7	20.7	■	■	VK-E90-273P	VK-E90-273G
323.9	20.7	20.7	■	■	VK-E90-324P	VK-E90-324G
114.3 (LR)*	27.6	34.5	■	■	VK-E90-114LRP	VK-E90-114LRG

* LR = Long radius



Grooved Fittings

Elbow | 45° | VK-E45



- From 33.7 mm to 323.9 mm
- UL and FM approvals
- Available in painted red and galvanised (Epoxy red available on request)



Size (mm)	Max. working pressure (bar)		Approvals		Part number	
	UL	FM	UL	FM	Painted red	Galvanised
33.7	27.6	34.5	▪	▪	VK-E45-034P	VK-E45-034G
42.4	27.6	34.5	▪	▪	VK-E45-042P	VK-E45-042G
48.3	27.6	34.5	▪	▪	VK-E45-048P	VK-E45-048G
60.3	27.6	34.5	▪	▪	VK-E45-060P	VK-E45-060G
73.0	27.6	34.5	▪	▪	VK-E45-073P	VK-E45-073G
76.1	27.6	34.5	▪	▪	VK-E45-076P	VK-E45-076G
88.9	27.6	34.5	▪	▪	VK-E45-089P	VK-E45-089G
108.0	27.6	34.5	▪	▪	VK-E45-108P	VK-E45-108G
114.3	27.6	34.5	▪	▪	VK-E45-114P	VK-E45-114G

Size (mm)	Max. working pressure (bar)		Approvals		Part number	
	UL	FM	UL	FM	Painted red	Galvanised
133.0	20.7	27.6	▪	▪	VK-E45-133P	VK-E45-133G
139.7	20.7	27.6	▪	▪	VK-E45-139P	VK-E45-139G
141.3	20.7	27.6	▪	▪	VK-E45-141P	VK-E45-141G
159.0	20.7	27.6	▪	▪	VK-E45-159P	VK-E45-159G
165.1	20.7	27.6	▪	▪	VK-E45-165P	VK-E45-165G
168.3	20.7	27.6	▪	▪	VK-E45-168P	VK-E45-168G
219.1	20.7	20.7	▪	▪	VK-E45-219P	VK-E45-219G
273.0	20.7	20.7	▪	▪	VK-E45-273P	VK-E45-273G
323.9	20.7	20.7	▪	▪	VK-E45-324P	VK-E45-324G

Elbow | 22.5° | VK-E22



- From 33.7 mm to 323.9 mm
- UL and FM approvals (depending on specific size)
- Available in painted red and galvanised (Epoxy red available on request)



Size (mm)	Max. working pressure (bar)		Approvals		Part number	
	UL	FM	UL	FM	Painted red	Galvanised
33.7	27.6	27.6	▪	▪	VK-E22-034P	VK-E22-034G
42.4	27.6	27.6	▪	▪	VK-E22-042P	VK-E22-042G
48.3	27.6	27.6	▪	▪	VK-E22-048P	VK-E22-048G
60.3	27.6	27.6	▪	▪	VK-E22-060P	VK-E22-060G
73.0	27.6	27.6	▪	▪	VK-E22-073P	VK-E22-073G
76.1	27.6	27.6	▪	▪	VK-E22-076P	VK-E22-076G
88.9	27.6	27.6	▪	▪	VK-E22-089P	VK-E22-089G
108.0	27.6	27.6	▪	▪	VK-E22-108P	VK-E22-108G
114.3	27.6	27.6	▪	▪	VK-E22-114P	VK-E22-114G

Size (mm)	Max. working pressure (bar)		Approvals		Part number	
	UL	FM	UL	FM	Painted red	Galvanised
133.0	-	20.7	-	▪	VK-E22-133P	VK-E22-133G
139.7	20.7	20.7	▪	▪	VK-E22-139P	VK-E22-139G
141.3	20.7	20.7	▪	▪	VK-E22-141P	VK-E22-141G
159.0	20.7	20.7	▪	▪	VK-E22-159P	VK-E22-159G
165.1	20.7	20.7	▪	▪	VK-E22-165P	VK-E22-165G
168.3	20.7	20.7	▪	▪	VK-E22-168P	VK-E22-168G
219.1	20.7	20.7	▪	▪	VK-E22-219P	VK-E22-219G
273.0	20.7	20.7	▪	▪	VK-E22-273P	VK-E22-273G
323.9	20.7	20.7	▪	▪	VK-E22-324P	VK-E22-324G

Grooved Fittings

Elbow | 11.25° | VK-E11



- From 33.7 mm to 323.9 mm
- UL and FM approvals (depending on specific size)
- Available in painted red and galvanised (Epoxy red available on request)



Size (mm)	Max. working pressure (bar)		Approvals		Part number	
	UL	FM	UL	FM	Painted red	Galvanised
33.7	27.6	27.6	▪	▪	VK-E11-034P	VK-E11-034G
42.4	27.6	27.6	▪	▪	VK-E11-042P	VK-E11-042G
48.3	27.6	27.6	▪	▪	VK-E11-048P	VK-E11-048G
60.3	27.6	27.6	▪	▪	VK-E11-060P	VK-E11-060G
73.0	27.6	27.6	▪	▪	VK-E11-073P	VK-E11-073G
76.1	27.6	27.6	▪	▪	VK-E11-076P	VK-E11-076G
88.9	27.6	27.6	▪	▪	VK-E11-089P	VK-E11-089G
108.0	27.6	27.6	▪	▪	VK-E11-108P	VK-E11-108G
114.3	27.6	27.6	▪	▪	VK-E11-114P	VK-E11-114G

Size (mm)	Max. working pressure (bar)		Approvals		Part number	
	UL	FM	UL	FM	Painted red	Galvanised
133.0	-	20.7	-	▪	VK-E11-133P	VK-E11-133G
139.7	20.7	20.7	▪	▪	VK-E11-139P	VK-E11-139G
141.3	20.7	20.7	▪	▪	VK-E11-141P	VK-E11-141G
159.0	20.7	20.7	▪	▪	VK-E11-159P	VK-E11-159G
165.1	20.7	20.7	▪	▪	VK-E11-165P	VK-E11-165G
168.3	20.7	20.7	▪	▪	VK-E11-168P	VK-E11-168G
219.1	20.7	20.7	▪	▪	VK-E11-219P	VK-E11-219G
273.0	20.7	20.7	▪	▪	VK-E11-273P	VK-E11-273G
323.9	20.7	20.7	▪	▪	VK-E11-324P	VK-E11-324G

Equal tee | VK-ET



- From 33.7 mm to 323.9 mm
- UL and FM approvals
- Available in painted red and galvanised (Epoxy red available on request)



Size (mm)	Max. working pressure (bar)		Approvals		Part number	
	UL	FM	UL	FM	Painted red	Galvanised
33.7	27.6	34.5	▪	▪	VK-ET-034P	VK-ET-034G
42.4	27.6	34.5	▪	▪	VK-ET-042P	VK-ET-042G
48.3	27.6	34.5	▪	▪	VK-ET-048P	VK-ET-048G
60.3	27.6	34.5	▪	▪	VK-ET-060P	VK-ET-060G
73.0	27.6	34.5	▪	▪	VK-ET-073P	VK-ET-073G
76.1	27.6	34.5	▪	▪	VK-ET-076P	VK-ET-076G
88.9	27.6	34.5	▪	▪	VK-ET-089P	VK-ET-089G
108.0	27.6	34.5	▪	▪	VK-ET-108P	VK-ET-108G
114.3	27.6	34.5	▪	▪	VK-ET-114P	VK-ET-114G

Size (mm)	Max. working pressure (bar)		Approvals		Part number	
	UL	FM	UL	FM	Painted red	Galvanised
133.0	20.7	27.6	▪	▪	VK-ET-133P	VK-ET-133G
139.7	20.7	27.6	▪	▪	VK-ET-139P	VK-ET-139G
141.3	20.7	27.6	▪	▪	VK-ET-141P	VK-ET-141G
159.0	20.7	27.6	▪	▪	VK-ET-159P	VK-ET-159G
165.1	20.7	27.6	▪	▪	VK-ET-165P	VK-ET-165G
168.3	20.7	27.6	▪	▪	VK-ET-168P	VK-ET-168G
219.1	20.7	20.7	▪	▪	VK-ET-219P	VK-ET-219G
273.0	20.7	20.7	▪	▪	VK-ET-273P	VK-ET-273G
323.9	20.7	20.7	▪	▪	VK-ET-324P	VK-ET-324G



Grooved Fittings

Reducing tee | Grooved | VK-RTG



- From 60.3 mm x 33.7 mm to 323.9 mm x 273 mm
- UL and FM approvals (depending on specific size)
- Available in painted red and galvanised (Epoxy red available on request)



Size (mm)	Max. working pressure (bar)		Approvals		Part number	
	UL	FM	UL	FM	Painted red	Galvanised
60.3 x 33.7	27.6	34.5	■	■	VK-RTG-060034P	VK-RTG-060034G
60.3 x 42.4	27.6	34.5	■	■	VK-RTG-060042P	VK-RTG-060042G
60.3 x 48.3	27.6	34.5	■	■	VK-RTG-060048P	VK-RTG-060048G
73.0 x 33.7	27.6	27.6	■	■	VK-RTG-073034P	VK-RTG-073034G
73.0 x 42.4	27.6	27.6	■	■	VK-RTG-073042P	VK-RTG-073042G
73.0 x 48.3	27.6	27.6	■	■	VK-RTG-073048P	VK-RTG-073048G
73.0 x 60.3	27.6	27.6	■	■	VK-RTG-073060P	VK-RTG-073060G
76.1 x 33.7	27.6	34.5	■	■	VK-RTG-076034P	VK-RTG-076034G
76.1 x 42.4	27.6	34.5	■	■	VK-RTG-076042P	VK-RTG-076042G
76.1 x 48.3	27.6	34.5	■	■	VK-RTG-076048P	VK-RTG-076048G
76.1 x 60.3	16.0	-	■	-	VK-RTG-076060P	VK-RTG-076060G
88.9 x 33.7	27.6	34.5	■	■	VK-RTG-089034P	VK-RTG-089034G
88.9 x 42.4	27.6	34.5	■	■	VK-RTG-089042P	VK-RTG-089042G
88.9 x 48.3	27.6	34.5	■	■	VK-RTG-089048P	VK-RTG-089048G
88.9 x 60.3	27.6	34.5	■	■	VK-RTG-089060P	VK-RTG-089060G
88.9 x 73.0	27.6	27.6	■	■	VK-RTG-089073P	VK-RTG-089073G
88.9 x 76.1	16.0	16.0	■	■	VK-RTG-089076P	VK-RTG-089076G
114.3 x 33.7	27.6	34.5	■	■	VK-RTG-114034P	VK-RTG-114034G
114.3 x 42.4	27.6	34.5	■	■	VK-RTG-114042P	VK-RTG-114042G
114.3 x 48.3	27.6	34.5	■	■	VK-RTG-114048P	VK-RTG-114048G
114.3 x 60.3	27.6	34.5	■	■	VK-RTG-114060P	VK-RTG-114060G
114.3 x 73.0	27.6	27.6	■	■	VK-RTG-114073P	VK-RTG-114073G
114.3 x 76.1	27.6	34.5	■	■	VK-RTG-114076P	VK-RTG-114076G
114.3 x 88.9	27.6	34.5	■	■	VK-RTG-114089P	VK-RTG-114089G
139.7 x 33.7	20.7	27.6	■	■	VK-RTG-139034P	VK-RTG-139034G
139.7 x 42.4	20.7	27.6	■	■	VK-RTG-139042P	VK-RTG-139042G
139.7 x 48.3	20.7	27.6	■	■	VK-RTG-139048P	VK-RTG-139048G
139.7 x 60.3	20.7	27.6	■	■	VK-RTG-139060P	VK-RTG-139060G
139.7 x 76.1	20.7	27.6	■	■	VK-RTG-139076P	VK-RTG-139076G
139.7 x 88.9	20.7	27.6	■	■	VK-RTG-139089P	VK-RTG-139089G
139.7 x 114.3	-	16.0	-	■	VK-RTG-139114P	VK-RTG-139114G
141.3 x 60.3	16.0	-	■	-	VK-RTG-141060P	VK-RTG-141060G
141.3 x 76.1	16.0	-	■	-	VK-RTG-141076P	VK-RTG-141076G
141.3 x 88.9	16.0	-	■	-	VK-RTG-141089P	VK-RTG-141089G
165.1 x 33.7	20.7	27.6	■	■	VK-RTG-165034P	VK-RTG-165034G

Table continued on next page

Grooved Fittings

Reducing tee | Grooved | VK-RTG (continued)

Size (mm)	Max. working pressure (bar)		Approvals		Part number	
	UL	FM	UL	FM	Painted red	Galvanised
165.1 x 42.4	20.7	27.6	▪	▪	VK-RTG-165042P	VK-RTG-165042G
165.1 x 48.3	20.7	27.6	▪	▪	VK-RTG-165048P	VK-RTG-165048G
165.1 x 60.3	20.7	27.6	▪	▪	VK-RTG-165060P	VK-RTG-165060G
165.1 x 76.1	20.7	27.6	▪	▪	VK-RTG-165076P	VK-RTG-165076G
165.1 x 88.9	20.7	27.6	▪	▪	VK-RTG-165089P	VK-RTG-165089G
165.1 x 114.3	20.7	27.6	▪	▪	VK-RTG-165114P	VK-RTG-165114G
165.1 x 139.7	-	16.0	-	▪	VK-RTG-165139P	VK-RTG-165139G
168.3 x 33.7	20.7	27.6	▪	▪	VK-RTG-168034P	VK-RTG-168034G
168.3 x 42.4	20.7	27.6	▪	▪	VK-RTG-168042P	VK-RTG-168042G
168.3 x 48.3	20.7	27.6	▪	▪	VK-RTG-168048P	VK-RTG-168048G
168.3 x 60.3	20.7	27.6	▪	▪	VK-RTG-168060P	VK-RTG-168060G
168.3 x 76.1	20.7	27.6	▪	▪	VK-RTG-168076P	VK-RTG-168076G
168.3 x 88.9	20.7	27.6	▪	▪	VK-RTG-168089P	VK-RTG-168089G
168.3 x 114.3	20.7	27.6	▪	▪	VK-RTG-168114P	VK-RTG-168114G
219.1 x 76.1	16.0	-	▪	-	VK-RTG-219076P	VK-RTG-219076G
219.1 x 88.9	16.0	-	▪	-	VK-RTG-219089P	VK-RTG-219089G
219.1 x 114.3	20.7	20.7	▪	▪	VK-RTG-219114P	VK-RTG-219114G
219.1 x 141.3	16.0	-	▪	-	VK-RTG-219141P	VK-RTG-219141G
219.1 x 165.1	20.7	-	▪	-	VK-RTG-219165P	VK-RTG-219165G
219.1 x 168.3	20.7	20.7	▪	▪	VK-RTG-219168P	VK-RTG-219168G
273.0 x 168.3	20.7	20.7	▪	▪	VK-RTG-273168P	VK-RTG-273168G
273.0 x 219.1	20.7	20.7	▪	▪	VK-RTG-273219P	VK-RTG-273219G
323.9 x 114.3	20.7	20.7	▪	▪	VK-RTG-324114P	VK-RTG-324114G
323.9 x 168.3	20.7	20.7	▪	▪	VK-RTG-324168P	VK-RTG-324168G
323.9 x 219.1	20.7	20.7	▪	▪	VK-RTG-324219P	VK-RTG-324219G
323.9 x 273.0	20.7	20.7	▪	▪	VK-RTG-324273P	VK-RTG-324273G



Grooved Fittings

Reducing tee | Threaded NPT | VK-RTT



- From 42.4 mm x 1" NPT to 168.3 mm x 4" NPT
- UL and FM approvals (depending on specific size)
- Available in painted red and galvanised (Epoxy red available on request)



Size (mm x inch)	Max. working pressure (bar)		Approvals		Part number	
	UL	FM	Threaded NPT		Painted red	Galvanised
			UL	FM		
42.4 x 1"	16.0	-	▪	-	VK-RTT-042034NP	VK-RTT-042034NG
48.3 x 1"	16.0	-	▪	-	VK-RTT-048034NP	VK-RTT-048034NG
48.3 x 1-1/4"	16.0	-	▪	-	VK-RTT-048042NP	VK-RTT-048042NG
60.3 x 1"	20.7	34.5	▪	▪	VK-RTT-060034NP	VK-RTT-060034NG
60.3 x 1-1/4"	20.7	34.5	▪	▪	VK-RTT-060042NP	VK-RTT-060042NG
60.3 x 1-1/2"	20.7	34.5	▪	▪	VK-RTT-060048NP	VK-RTT-060048NG
73.0 x 1"	27.6	27.6	▪	▪	VK-RTT-073034NP	VK-RTT-073034NG
73.0 x 1-1/4"	27.6	27.6	▪	▪	VK-RTT-073042NP	VK-RTT-073042NG
73.0 x 1-1/2"	27.6	27.6	▪	▪	VK-RTT-073048NP	VK-RTT-073048NG
73.0 x 2"	27.6	27.6	▪	▪	VK-RTT-073060NP	VK-RTT-073060NG
76.1 x 1"	20.7	34.5	▪	▪	VK-RTT-076034NP	VK-RTT-076034NG
76.1 x 1-1/4"	20.7	34.5	▪	▪	VK-RTT-076042NP	VK-RTT-076042NG
76.1 x 1-1/2"	20.7	34.5	▪	▪	VK-RTT-076048NP	VK-RTT-076048NG
76.1 x 2"	16.0	-	▪	-	VK-RTT-076060NP	VK-RTT-076060NG
88.9 x 1"	20.7	34.5	▪	▪	VK-RTT-089034NP	VK-RTT-089034NG
88.9 x 1-1/4"	20.7	34.5	▪	▪	VK-RTT-089042NP	VK-RTT-089042NG
88.9 x 1-1/2"	20.7	34.5	▪	▪	VK-RTT-089048NP	VK-RTT-089048NG
88.9 x 2"	20.7	34.5	▪	▪	VK-RTT-089060NP	VK-RTT-089060NG
88.9 x 2-1/2"	16.0	-	▪	-	VK-RTT-089076NP	VK-RTT-089076NG
114.3 x 1"	20.7	34.5	▪	▪	VK-RTT-114034NP	VK-RTT-114034NG
114.3 x 1-1/4"	20.7	34.5	▪	▪	VK-RTT-114042NP	VK-RTT-114042NG
114.3 x 1-1/2"	20.7	34.5	▪	▪	VK-RTT-114048NP	VK-RTT-114048NG
114.3 x 2"	20.7	34.5	▪	▪	VK-RTT-114060NP	VK-RTT-114060NG
114.3 x 2-1/2"	20.7	34.5	▪	▪	VK-RTT-114076NP	VK-RTT-114076NG
114.3 x 3"	20.7	34.5	▪	▪	VK-RTT-114089NP	VK-RTT-114089NG
139.7 x 1"	20.7	27.6	▪	▪	VK-RTT-139034NP	VK-RTT-139034NG
139.7 x 1-1/4"	20.7	27.6	▪	▪	VK-RTT-139042NP	VK-RTT-139042NG
139.7 x 1-1/2"	20.7	27.6	▪	▪	VK-RTT-139048NP	VK-RTT-139048NG
139.7 x 2"	20.7	27.6	▪	▪	VK-RTT-139060NP	VK-RTT-139060NG
139.7 x 2-1/2"	20.7	27.6	▪	▪	VK-RTT-139076NP	VK-RTT-139076NG
139.7 x 3"	20.7	27.6	▪	▪	VK-RTT-139089NP	VK-RTT-139089NG
141.3 x 1"	16.0	-	▪	-	VK-RTT-141034NP	VK-RTT-141034NG
141.3 x 1-1/4"	16.0	-	▪	-	VK-RTT-141042NP	VK-RTT-141042NG
141.3 x 1-1/2"	16.0	-	▪	-	VK-RTT-141048NP	VK-RTT-141048NG
141.3 x 2"	16.0	-	▪	-	VK-RTT-141060NP	VK-RTT-141060NG
141.3 x 2-1/2"	16.0	-	▪	-	VK-RTT-141076NP	VK-RTT-141076NG
165.1 x 1"	20.7	27.6	▪	▪	VK-RTT-165034NP	VK-RTT-165034NG
165.1 x 1-1/4"	20.7	27.6	▪	▪	VK-RTT-165042NP	VK-RTT-165042NG
165.1 x 1-1/2"	20.7	27.6	▪	▪	VK-RTT-165048NP	VK-RTT-165048NG
165.1 x 2"	20.7	27.6	▪	▪	VK-RTT-165060NP	VK-RTT-165060NG
165.1 x 2-1/2"	20.7	27.6	▪	▪	VK-RTT-165076NP	VK-RTT-165076NG
165.1 x 3"	20.7	27.6	▪	▪	VK-RTT-165089NP	VK-RTT-165089NG
165.1 x 4"	20.7	27.6	▪	▪	VK-RTT-165114NP	VK-RTT-165114NG
168.3 x 1"	20.7	27.6	▪	▪	VK-RTT-168034NP	VK-RTT-168034NG
168.3 x 1-1/4"	20.7	27.6	▪	▪	VK-RTT-168042NP	VK-RTT-168042NG
168.3 x 1-1/2"	20.7	27.6	▪	▪	VK-RTT-168048NP	VK-RTT-168048NG
168.3 x 2"	20.7	27.6	▪	▪	VK-RTT-168060NP	VK-RTT-168060NG
168.3 x 2-1/2"	20.7	27.6	▪	▪	VK-RTT-168076NP	VK-RTT-168076NG
168.3 x 3"	20.7	27.6	▪	▪	VK-RTT-168089NP	VK-RTT-168089NG
168.3 x 4"	20.7	27.6	▪	▪	VK-RTT-168114NP	VK-RTT-168114NG

Grooved Fittings

Reducing tee | Threaded BSP | VK-RTT



- From 42.4 mm x DN25 BSP to 168.3 mm x DN100 BSP
- UL and FM approvals (depending on specific size)
- Available in painted red and galvanised (Epoxy red available on request)

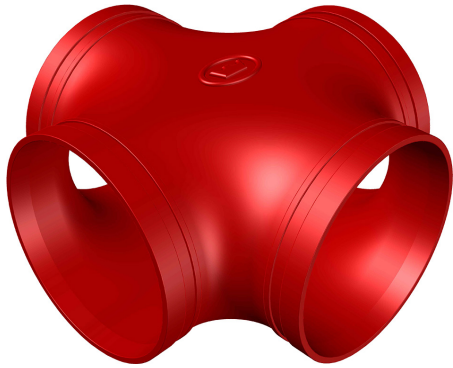


Size (mm x DN)	Max. working pressure (bar)		Approvals		Part number	
	UL	FM	UL	FM	Painted red	Galvanised
42.4 x DN25	16.0	-	▪	-	VK-RTT-042034BP	VK-RTT-042034BG
48.3 x DN25	16.0	-	▪	-	VK-RTT-048034BP	VK-RTT-048034BG
48.3 x DN32	16.0	-	▪	-	VK-RTT-048042BP	VK-RTT-048042BG
60.3 x DN25	20.7	34.5	▪	▪	VK-RTT-060034BP	VK-RTT-060034BG
60.3 x DN32	20.7	34.5	▪	▪	VK-RTT-060042BP	VK-RTT-060042BG
60.3 x DN40	20.7	34.5	▪	▪	VK-RTT-060048BP	VK-RTT-060048BG
73.0 x DN25	27.6	27.6	▪	▪	VK-RTT-073034BP	VK-RTT-073034BG
73.0 x DN32	27.6	27.6	▪	▪	VK-RTT-073042BP	VK-RTT-073042BG
73.0 x DN40	27.6	27.6	▪	▪	VK-RTT-073048BP	VK-RTT-073048BG
73.0 x DN50	27.6	27.6	▪	▪	VK-RTT-073060BP	VK-RTT-073060BG
76.1 x DN25	20.7	34.5	▪	▪	VK-RTT-076034BP	VK-RTT-076034BG
76.1 x DN32	20.7	34.5	▪	▪	VK-RTT-076042BP	VK-RTT-076042BG
76.1 x DN40	20.7	34.5	▪	▪	VK-RTT-076048BP	VK-RTT-076048BG
76.1 x DN50	16.0	-	▪	-	VK-RTT-076060BP	VK-RTT-076060BG
88.9 x DN25	20.7	34.5	▪	▪	VK-RTT-089034BP	VK-RTT-089034BG
88.9 x DN32	20.7	34.5	▪	▪	VK-RTT-089042BP	VK-RTT-089042BG
88.9 x DN40	20.7	34.5	▪	▪	VK-RTT-089048BP	VK-RTT-089048BG
88.9 x DN50	20.7	34.5	▪	▪	VK-RTT-089060BP	VK-RTT-089060BG
88.9 x DN65	16.0	-	▪	-	VK-RTT-089076BP	VK-RTT-089076BG
114.3 x DN25	20.7	34.5	▪	▪	VK-RTT-114034BP	VK-RTT-114034BG
114.3 x DN32	20.7	34.5	▪	▪	VK-RTT-114042BP	VK-RTT-114042BG
114.3 x DN40	20.7	34.5	▪	▪	VK-RTT-114048BP	VK-RTT-114048BG
114.3 x DN50	20.7	34.5	▪	▪	VK-RTT-114060BP	VK-RTT-114060BG
114.3 x DN65	20.7	34.5	▪	▪	VK-RTT-114076BP	VK-RTT-114076BG
114.3 x DN80	20.7	34.5	▪	▪	VK-RTT-114089BP	VK-RTT-114089BG
139.7 x DN25	20.7	27.6	▪	▪	VK-RTT-139034BP	VK-RTT-139034BG
139.7 x DN32	20.7	27.6	▪	▪	VK-RTT-139042BP	VK-RTT-139042BG
139.7 x DN40	20.7	27.6	▪	▪	VK-RTT-139048BP	VK-RTT-139048BG
139.7 x DN50	20.7	27.6	▪	▪	VK-RTT-139060BP	VK-RTT-139060BG
139.7 x DN65	20.7	27.6	▪	▪	VK-RTT-139076BP	VK-RTT-139076BG
139.7 x DN80	20.7	27.6	▪	▪	VK-RTT-139089BP	VK-RTT-139089BG
141.3 x DN25	16.0	-	▪	-	VK-RTT-141034BP	VK-RTT-141034BG
141.3 x DN32	16.0	-	▪	-	VK-RTT-141042BP	VK-RTT-141042BG
141.3 x DN40	16.0	-	▪	-	VK-RTT-141048BP	VK-RTT-141048BG
141.3 x DN50	16.0	-	▪	-	VK-RTT-141060BP	VK-RTT-141060BG
141.3 x DN65	16.0	-	▪	-	VK-RTT-141076BP	VK-RTT-141076BG
165.1 x DN25	20.7	27.6	▪	▪	VK-RTT-165034BP	VK-RTT-165034BG
165.1 x DN32	20.7	27.6	▪	▪	VK-RTT-165042BP	VK-RTT-165042BG
165.1 x DN40	20.7	27.6	▪	▪	VK-RTT-165048BP	VK-RTT-165048BG
165.1 x DN50	20.7	27.6	▪	▪	VK-RTT-165060BP	VK-RTT-165060BG
165.1 x DN65	20.7	27.6	▪	▪	VK-RTT-165076BP	VK-RTT-165076BG
165.1 x DN80	20.7	27.6	▪	▪	VK-RTT-165089BP	VK-RTT-165089BG
165.1 x DN100	20.7	27.6	▪	▪	VK-RTT-165114BP	VK-RTT-165114BG
168.3 x DN25	20.7	27.6	▪	▪	VK-RTT-168034BP	VK-RTT-168034BG
168.3 x DN32	20.7	27.6	▪	▪	VK-RTT-168042BP	VK-RTT-168042BG
168.3 x DN40	20.7	27.6	▪	▪	VK-RTT-168048BP	VK-RTT-168048BG
168.3 x DN50	20.7	27.6	▪	▪	VK-RTT-168060BP	VK-RTT-168060BG
168.3 x DN65	20.7	27.6	▪	▪	VK-RTT-168076BP	VK-RTT-168076BG
168.3 x DN80	20.7	27.6	▪	▪	VK-RTT-168089BP	VK-RTT-168089BG
168.3 x DN100	20.7	27.6	▪	▪	VK-RTT-168114BP	VK-RTT-168114BG



Grooved Fittings

Cross | VK-CX



- From 33.7 mm to 323.9 mm
- UL and FM approvals
- Available in painted red and galvanised (Epoxy red available on request)



Size (mm)	Max. working pressure (bar)		Approvals		Part number	
	UL	FM	UL	FM	Painted red	Galvanised
33.7	27.6	34.5	▪	▪	VK-CX-034P	VK-CX-034G
42.4	27.6	34.5	▪	▪	VK-CX-042P	VK-CX-042G
48.3	27.6	34.5	▪	▪	VK-CX-048P	VK-CX-048G
60.3	27.6	34.5	▪	▪	VK-CX-060P	VK-CX-060G
73.0	27.6	34.5	▪	▪	VK-CX-073P	VK-CX-073G
76.1	27.6	34.5	▪	▪	VK-CX-076P	VK-CX-076G
88.9	27.6	34.5	▪	▪	VK-CX-089P	VK-CX-089G
108.0	27.6	34.5	▪	▪	VK-CX-108P	VK-CX-108G
114.3	27.6	34.5	▪	▪	VK-CX-114P	VK-CX-114G

Size (mm)	Max. working pressure (bar)		Approvals		Part number	
	UL	FM	UL	FM	Painted red	Galvanised
133	20.7	27.6	▪	▪	VK-CX-133P	VK-CX-133G
139.7	20.7	27.6	▪	▪	VK-CX-139P	VK-CX-139G
141.3	20.7	27.6	▪	▪	VK-CX-141P	VK-CX-141G
159	20.7	27.6	▪	▪	VK-CX-159P	VK-CX-159G
165.1	20.7	27.6	▪	▪	VK-CX-165P	VK-CX-165G
168.3	20.7	27.6	▪	▪	VK-CX-168P	VK-CX-168G
219.1	20.7	20.7	▪	▪	VK-CX-219P	VK-CX-219G
273	20.7	20.7	▪	▪	VK-CX-273P	VK-CX-273G
323.9	20.7	20.7	▪	▪	VK-CX-324P	VK-CX-324G

End cap | VK-EC



- From 33.7 mm to 323.9 mm
- UL and FM approvals
- Available in painted red and galvanised (Epoxy red available on request)

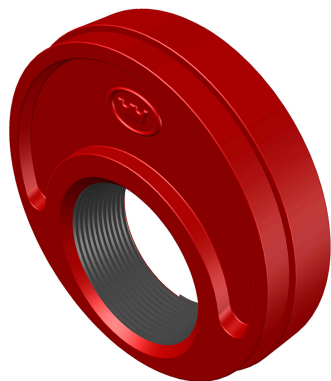


Size (mm)	Max. working pressure (bar)		Approvals		Part number	
	UL	FM	UL	FM	Painted red	Galvanised
33.7	27.6	34.5	▪	▪	VK-EC-034P	VK-EC-034G
42.4	27.6	34.5	▪	▪	VK-EC-042P	VK-EC-042G
48.3	27.6	34.5	▪	▪	VK-EC-048P	VK-EC-048G
60.3	27.6	34.5	▪	▪	VK-EC-060P	VK-EC-060G
73.0	27.6	34.5	▪	▪	VK-EC-073P	VK-EC-073G
76.1	27.6	34.5	▪	▪	VK-EC-076P	VK-EC-076G
88.9	27.6	34.5	▪	▪	VK-EC-089P	VK-EC-089G
108.0	27.6	34.5	▪	▪	VK-EC-108P	VK-EC-108G
114.3	27.6	34.5	▪	▪	VK-EC-114P	VK-EC-114G

Size (mm)	Max. working pressure (bar)		Approvals		Part number	
	UL	FM	UL	FM	Painted red	Galvanised
133.0	20.7	27.6	▪	▪	VK-EC-133P	VK-EC-133G
139.7	20.7	27.6	▪	▪	VK-EC-139P	VK-EC-139G
141.3	20.7	27.6	▪	▪	VK-EC-141P	VK-EC-141G
159.0	20.7	27.6	▪	▪	VK-EC-159P	VK-EC-159G
165.1	20.7	27.6	▪	▪	VK-EC-165P	VK-EC-165G
168.3	20.7	27.6	▪	▪	VK-EC-168P	VK-EC-168G
219.1	20.7	20.7	▪	▪	VK-EC-219P	VK-EC-219G
273.0	20.7	20.7	▪	▪	VK-EC-273P	VK-EC-273G
323.9	20.7	20.7	▪	▪	VK-EC-324P	VK-EC-324G

Grooved Fittings

End cap | Drilled | VK-ECD



- From 60.3 mm x 1" NPT (DN25 BSP) to 219.1 mm x 2" NPT (DN50 BSP)
- UL and FM approvals (depending on specific size)
- Available in painted red and galvanised (Epoxy red available on request)



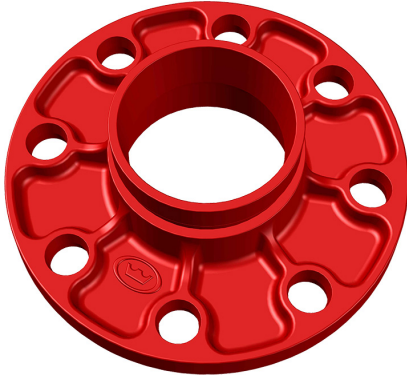
Threaded NPT						
Size (mm x inch)	Max. working pressure (bar)		Approvals		Part number	
	UL	FM	UL	FM	Painted red	Galvanised
60.3 x 1"	20.7	34.5	▪	▪	VK-ECD-060034NP	VK-ECD-060034NG
60.3 x 1-1/2"	20.7	-	▪	-	VK-ECD-060048NP	VK-ECD-060048NG
73.0 x 1"	20.7	34.5	▪	▪	VK-ECD-073034NP	VK-ECD-073034NG
76.1 x 1-1/2"	20.7	-	▪	-	VK-ECD-076048NP	VK-ECD-076048NG
76.1 x 2"	20.7	-	▪	-	VK-ECD-076060NP	VK-ECD-076060NG
88.9 x 1"	20.7	34.5	▪	▪	VK-ECD-089034NP	VK-ECD-089034NG
88.9 x 1-1/2"	20.7	-	▪	-	VK-ECD-089048NP	VK-ECD-089048NG
88.9 x 2"	20.7	-	▪	-	VK-ECD-089060NP	VK-ECD-089060NG
114.3 x 1"	20.7	34.5	▪	▪	VK-ECD-114034NP	VK-ECD-114034NG
114.3 x 1-1/2"	20.7	-	▪	-	VK-ECD-114048NP	VK-ECD-114048NG
114.3 x 2"	20.7	-	▪	-	VK-ECD-114060NP	VK-ECD-114060NG
139.7 x 2"	20.7	-	▪	-	VK-ECD-139060NP	VK-ECD-139060NG
168.3 x 1"	20.7	34.5	▪	▪	VK-ECD-168034NP	VK-ECD-168034NG
168.3 x 2"	20.7	-	▪	-	VK-ECD-168060NP	VK-ECD-168060NG
219.1 x 2"	20.7	-	▪	-	VK-ECD-219060NP	VK-ECD-219060NG

Threaded BSP						
Size (mm x DN)	Max. working pressure (bar)		Approvals		Part number	
	UL	FM	UL	FM	Painted red	Galvanised
60.3 x DN25	20.7	34.5	▪	▪	VK-ECD-060034BP	VK-ECD-060034BG
60.3 x DN40	20.7	-	▪	-	VK-ECD-060048BP	VK-ECD-060048BG
73.0 x DN25	20.7	34.5	▪	▪	VK-ECD-073034BP	VK-ECD-073034BG
76.1 x DN40	20.7	-	▪	-	VK-ECD-076048BP	VK-ECD-076048BG
76.1 x DN50	20.7	-	▪	-	VK-ECD-076060BP	VK-ECD-076060BG
88.9 x DN25	20.7	34.5	▪	▪	VK-ECD-089034BP	VK-ECD-089034BG
88.9 x DN40	20.7	-	▪	-	VK-ECD-089048BP	VK-ECD-089048BG
88.9 x DN50	20.7	-	▪	-	VK-ECD-089060BP	VK-ECD-089060BG
114.3 x DN25	20.7	34.5	▪	▪	VK-ECD-114034BP	VK-ECD-114034BG
114.3 x DN40	20.7	-	▪	-	VK-ECD-114048BP	VK-ECD-114048BG
114.3 x DN50	20.7	-	▪	-	VK-ECD-114060BP	VK-ECD-114060BG
139.7 x DN50	20.7	-	▪	-	VK-ECD-139060BP	VK-ECD-139060BG
168.3 x DN25	20.7	34.5	▪	▪	VK-ECD-168034BP	VK-ECD-168034BG
168.3 x DN50	20.7	-	▪	-	VK-ECD-168060BP	VK-ECD-168060BG
219.1 x DN50	20.7	-	▪	-	VK-ECD-219060BP	VK-ECD-219060BG



Grooved Fittings

Flange adapter | Grooved PN16 | VK-FAP



- From 60.3 mm to 323.9 mm
- UL and FM approvals
- Available in painted red and galvanised (Epoxy red available on request)



Size (mm)	Max. working pressure (bar)		Approvals		Part number	
	UL	FM	UL	FM	Painted red	Galvanised
60.3	20.7	20.7	▪	▪	VK-FAP-060P	VK-FAP-060G
73.0	20.7	20.7	▪	▪	VK-FAP-073P	VK-FAP-073G
76.1	20.7	20.7	▪	▪	VK-FAP-076P	VK-FAP-076G
88.9	20.7	20.7	▪	▪	VK-FAP-089P	VK-FAP-089G
108.0	20.7	20.7	▪	▪	VK-FAP-108P	VK-FAP-108G
114.3	20.7	20.7	▪	▪	VK-FAP-114P	VK-FAP-114G
133.0	20.7	20.7	▪	▪	VK-FAP-133P	VK-FAP-133G
139.7	20.7	20.7	▪	▪	VK-FAP-139P	VK-FAP-139G

Size (mm)	Max. working pressure (bar)		Approvals		Part number	
	UL	FM	UL	FM	Painted red	Galvanised
141.3	20.7	20.7	▪	▪	VK-FAP-141P	VK-FAP-141G
159.0	20.7	20.7	▪	▪	VK-FAP-159P	VK-FAP-159G
165.1	20.7	20.7	▪	▪	VK-FAP-165P	VK-FAP-165G
168.3	20.7	20.7	▪	▪	VK-FAP-168P	VK-FAP-168G
219.1	20.7	20.7	▪	▪	VK-FAP-219P	VK-FAP-219G
273.0	20.7	20.7	▪	▪	VK-FAP-273P	VK-FAP-273G
323.9	20.7	20.7	▪	▪	VK-FAP-324P	VK-FAP-324G

Flange adapter | Grooved ANSI | VK-FAA



- From 60.3 mm to 323.9 mm
- UL and FM approvals (depending on specific size)
- Available in painted red and galvanised (Epoxy red available on request)



Size (mm)	Max. working pressure (bar)		Approvals		Part number	
	UL	FM	UL	FM	Painted red	Galvanised
60.3	20.7	20.7	▪	▪	VK-FAA-060P	VK-FAA-060G
73.0	20.7	20.7	▪	▪	VK-FAA-073P	VK-FAA-073G
88.9	20.7	20.7	▪	▪	VK-FAA-089P	VK-FAA-089G
114.3	20.7	20.7	▪	▪	VK-FAA-114P	VK-FAA-114G
141.3	20.7	20.7	▪	▪	VK-FAA-141P	VK-FAA-141G

Size (mm)	Max. working pressure (bar)		Approvals		Part number	
	UL	FM	UL	FM	Painted red	Galvanised
168.3	20.7	20.7	▪	▪	VK-FAA-168P	VK-FAA-168G
219.1	20.7	20.7	▪	▪	VK-FAA-219P	VK-FAA-219G
273.0	20.7	20.7	▪	-	VK-FAA-273P	-
323.9	20.7	20.7	▪	-	VK-FAA-324P	-

Grooved Fittings

Flange adapter | Threaded BSP and NPT | VK-FTP

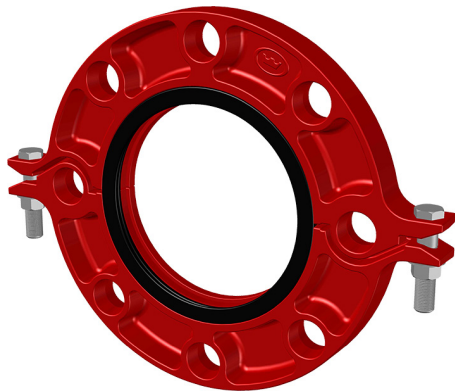


- From 2" to 4" NPT (DN50 - DN100 BSP)
- UL and FM approvals
- Available in painted red and galvanised (Epoxy red available on request)



Size (mm)	Max. working pressure (bar)		Approvals		Part number	
	UL	FM	UL	FM	Painted red	Galvanised
Threaded NPT						
2"	20.7	20.7	▪	▪	VK-FTP-060NP	VK-FTP-060NG
2-1/2"	20.7	20.7	▪	▪	VK-FTP-076NP	VK-FTP-076NG
3"	20.7	20.7	▪	▪	VK-FTP-089NP	VK-FTP-089NG
4"	20.7	20.7	▪	▪	VK-FTP-114NP	VK-FTP-114NG
Threaded BSP						
DN50	20.7	20.7	▪	▪	VK-FTP-060BP	VK-FTP-060BG
DN65	20.7	20.7	▪	▪	VK-FTP-076BP	VK-FTP-076BG
DN80	20.7	20.7	▪	▪	VK-FTP-089BP	VK-FTP-089BG
DN100	20.7	20.7	▪	▪	VK-FTP-114BP	VK-FTP-114BG

Split flange adapter | PN16 | VK-SFP



- From 60.3 mm to 219.1 mm
- UL and FM approvals
- Available in painted red and galvanised (Epoxy red available on request)



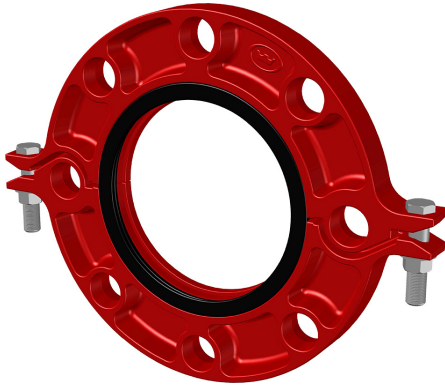
Size (mm)	Max. working pressure (bar)		Approvals		Part number	
	UL	FM	UL	FM	Painted red	Galvanised
60.3	20.7	20.7	▪	▪	VK-SFP-060P	VK-SFP-060G
73.0	20.7	20.7	▪	▪	VK-SFP-073P	VK-SFP-073G
76.1	20.7	20.7	▪	▪	VK-SFP-076P	VK-SFP-076G
88.9	20.7	20.7	▪	▪	VK-SFP-089P	VK-SFP-089G
108.0	20.7	20.7	▪	▪	VK-SFP-108P	VK-SFP-108G
114.3	20.7	20.7	▪	▪	VK-SFP-114P	VK-SFP-114G
133.0	20.7	20.7	▪	▪	VK-SFP-133P	VK-SFP-133G

Size (mm)	Max. working pressure (bar)		Approvals		Part number	
	UL	FM	UL	FM	Painted red	Galvanised
139.7	20.7	20.7	▪	▪	VK-SFP-139P	VK-SFP-139G
141.3	20.7	20.7	▪	▪	VK-SFP-141P	VK-SFP-141G
159.0	20.7	20.7	▪	▪	VK-SFP-159P	VK-SFP-159G
165.1	20.7	20.7	▪	▪	VK-SFP-165P	VK-SFP-165G
168.3	20.7	20.7	▪	▪	VK-SFP-168P	VK-SFP-168G
219.1	20.7	20.7	▪	▪	VK-SFP-219P	VK-SFP-219G



Grooved Fittings

Split flange adapter | ANSI | VK-SFA



- From 60.3 mm to 273.0 mm
- UL and FM approvals (depending on specific size)
- Available in painted red and galvanised (Epoxy red available on request)



Size (mm)	Max. working pressure (bar)		Approvals		Part number	
	UL	FM	UL	FM	Painted red	Galvanised
60.3	20.7	20.7	▪	▪	VK-SFA-060P	VK-SFA-060G
73.0	20.7	20.7	▪	▪	VK-SFA-073P	VK-SFA-073G
88.9	20.7	20.7	▪	▪	VK-SFA-089P	VK-SFA-089G
114.3	20.7	20.7	▪	▪	VK-SFA-114P	VK-SFA-114G
141.3	20.7	20.7	▪	▪	VK-SFA-141P	VK-SFA-141G
168.3	20.7	20.7	▪	▪	VK-SFA-168P	VK-SFA-168G
219.1	20.7	20.7	▪	▪	VK-SFA-219P	VK-SFA-219G
273.0	12.1	-	▪	-	VK-SFA-273P	VK-SFA-273G

Grooved Fittings

Eccentric reducer | Grooved | VK-ER



- From 88.9 mm x 60.3 mm to 273.0 mm x 219.1 mm
- UL and FM approvals (depending on specific size)
- Available in painted red and galvanised (Epoxy red available on request)

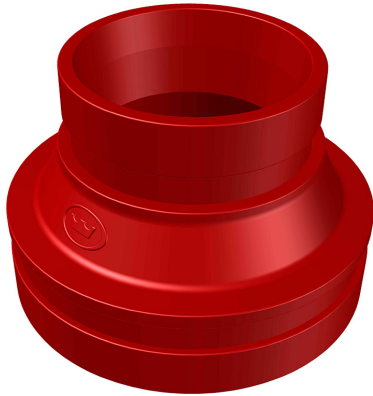


Size (mm)	Max. working pressure (bar)		Approvals		Part number	
	UL	FM	UL	FM	Painted red	Galvanised
88.9 x 60.3	27.6	20.7	■	■	VK-ER-089060P	VK-ER-089060G
88.9 x 73.0	27.6	20.7	■	■	VK-ER-089073P	VK-ER-089073G
88.9 x 76.1	27.6	20.7	■	■	VK-ER-089076P	VK-ER-089076G
114.3 x 60.3	27.6	20.7	■	■	VK-ER-114060P	VK-ER-114060G
114.3 x 73.0	27.6	20.7	■	■	VK-ER-114073P	VK-ER-114073G
114.3 x 76.1	27.6	20.7	■	■	VK-ER-114076P	VK-ER-114076G
114.3 x 88.9	27.6	20.7	■	■	VK-ER-114089P	VK-ER-114089G
139.7 x 76.1	20.7	20.7	■	■	VK-ER-139076P	VK-ER-139076G
139.7 x 88.9	20.7	20.7	■	■	VK-ER-139089P	VK-ER-139089G
139.7 x 114.3	20.7	20.7	■	■	VK-ER-139114P	VK-ER-139114G
159.0 x 60.3	20.7	-	■	-	VK-ER-159060P	VK-ER-159060G
159.0 x 76.1	20.7	20.7	■	■	VK-ER-159076P	VK-ER-159076G
159.0 x 88.9	20.7	20.7	■	■	VK-ER-159089P	VK-ER-159089G
159.0 x 108.0	20.7	20.7	■	■	VK-ER-159108P	VK-ER-159108G
159.0 x 114.3	20.7	20.7	■	■	VK-ER-159114P	VK-ER-159114G
165.1 x 76.1	20.7	20.7	■	■	VK-ER-165076P	VK-ER-165076G
165.1 x 88.9	20.7	20.7	■	■	VK-ER-165089P	VK-ER-165089G
165.1 x 114.3	20.7	20.7	■	■	VK-ER-165114P	VK-ER-165114G
165.1 x 139.7	20.7	20.7	■	■	VK-ER-165139P	VK-ER-165139G
168.3 x 88.9	20.7	20.7	■	■	VK-ER-168089P	VK-ER-168089G
168.3 x 114.3	20.7	20.7	■	■	VK-ER-168114P	VK-ER-168114G
168.3 x 139.7	20.7	20.7	■	■	VK-ER-168139P	VK-ER-168139G
219.1 x 88.9	20.7	20.7	■	■	VK-ER-219089P	VK-ER-219089G
219.1 x 114.3	20.7	20.7	■	■	VK-ER-219114P	VK-ER-219114G
219.1 x 139.7	20.7	20.7	■	■	VK-ER-219139P	VK-ER-219139G
219.1 x 165.1	20.7	20.7	■	■	VK-ER-219165P	VK-ER-219165G
219.1 x 168.3	20.7	20.7	■	■	VK-ER-219168P	VK-ER-219168G
273.0 x 165.1	20.7	20.7	■	■	VK-ER-273165P	VK-ER-273165G
273.0 x 168.3	20.7	20.7	■	■	VK-ER-273168P	VK-ER-273168G
273.0 x 219.1	20.7	20.7	■	■	VK-ER-273219P	VK-ER-273219G



Grooved Fittings

Concentric reducer | Grooved | VK-CRG



- From 42.4 mm x 33.7 mm to 323.9 mm x 273.0 mm
- UL and FM approvals (depending on specific size)
- Available in painted red and galvanised (Epoxy red available on request)



Size (mm)	Max. working pressure (bar)		Approvals		Part number	
	UL	FM	UL	FM	Painted red	Galvanised
42.4 x 33.7	27.6	-	■	-	VK-CRG-042034P	VK-CRG-042034G
48.3 x 33.7	27.6	-	■	-	VK-CRG-048034P	VK-CRG-048034G
48.3 x 42.4	16.0	-	■	-	VK-CRG-048042P	VK-CRG-048042G
60.3 x 33.7	27.6	34.5	■	■	VK-CRG-060034P	VK-CRG-060034G
60.3 x 42.4	27.6	34.5	■	■	VK-CRG-060042P	VK-CRG-060042G
60.3 x 48.3	27.6	34.5	■	■	VK-CRG-060048P	VK-CRG-060048G
73.0 x 42.4	27.6	20.7	■	■	VK-CRG-073042P	VK-CRG-073042G
73.0 x 48.3	27.6	20.7	■	■	VK-CRG-073048P	VK-CRG-073048G
73.0 x 60.3	27.6	20.7	■	■	VK-CRG-073060P	VK-CRG-073060G
76.1 x 33.7	27.6	-	■	-	VK-CRG-076034P	VK-CRG-076034G
76.1 x 42.4	27.6	34.5	■	■	VK-CRG-076042P	VK-CRG-076042G
76.1 x 48.3	27.6	34.5	■	■	VK-CRG-076048P	VK-CRG-076048G
76.1 x 60.3	27.6	16.0	■	■	VK-CRG-076060P	VK-CRG-076060G
88.9 x 42.4	27.6	34.5	■	■	VK-CRG-089042P	VK-CRG-089042G
88.9 x 48.3	27.6	34.5	■	■	VK-CRG-089048P	VK-CRG-089048G
88.9 x 60.3	27.6	34.5	■	■	VK-CRG-089060P	VK-CRG-089060G
88.9 x 73.0	27.6	20.7	■	■	VK-CRG-089073P	VK-CRG-089073G
88.9 x 76.1	27.6	20.7	■	■	VK-CRG-089076P	VK-CRG-089076G
114.3 x 42.4	27.6	34.5	■	■	VK-CRG-114042P	VK-CRG-114042G
114.3 x 48.3	27.6	34.5	■	■	VK-CRG-114048P	VK-CRG-114048G
114.3 x 60.3	27.6	34.5	■	■	VK-CRG-114060P	VK-CRG-114060G
114.3 x 73.0	27.6	20.7	■	■	VK-CRG-114073P	VK-CRG-114073G
114.3 x 76.1	27.6	34.5	■	■	VK-CRG-114076P	VK-CRG-114076G
114.3 x 88.9	27.6	34.5	■	■	VK-CRG-114089P	VK-CRG-114089G
139.7 x 42.4	20.7	20.7	■	■	VK-CRG-139042P	VK-CRG-139042G
139.7 x 48.3	20.7	20.7	■	■	VK-CRG-139048P	VK-CRG-139048G
139.7 x 60.3	20.7	20.7	■	■	VK-CRG-139060P	VK-CRG-139060G
139.7 x 76.1	20.7	20.7	■	■	VK-CRG-139076P	VK-CRG-139076G
139.7 x 88.9	20.7	20.7	■	■	VK-CRG-139089P	VK-CRG-139089G
139.7 x 114.3	20.7	16.0	■	■	VK-CRG-139114P	VK-CRG-139114G
141.3 x 60.3	16.0	-	■	-	VK-CRG-141060P	VK-CRG-141060G
141.3 x 76.1	16.0	-	■	-	VK-CRG-141076P	VK-CRG-141076G

Table continued on next page

Grooved Fittings

Concentric reducer | Grooved | VK-CRG (continued)

Size (mm)	Max. working pressure (bar)		Approvals		Part number	
	UL	FM	UL	FM	Painted red	Galvanised
141.3 x 114.3	16.0	-	▪	-	VK-CRG-141114P	VK-CRG-141114G
165.1 x 60.3	20.7	20.7	▪	▪	VK-CRG-165060P	VK-CRG-165060G
165.1 x 76.1	20.7	20.7	▪	▪	VK-CRG-165076P	VK-CRG-165076G
165.1 x 88.9	20.7	20.7	▪	▪	VK-CRG-165089P	VK-CRG-165089G
165.1 x 114.3	20.7	20.7	▪	▪	VK-CRG-165114P	VK-CRG-165114G
165.1 x 139.7	-	16.0	-	-	VK-CRG-165139P	VK-CRG-165139G
165.1 x 141.3	16.0	-	▪	-	VK-CRG-165141P	VK-CRG-165141G
168.3 x 60.3	20.7	20.7	▪	▪	VK-CRG-168060P	VK-CRG-168060G
168.3 x 73.0	20.7	27.6	▪	▪	VK-CRG-168073P	VK-CRG-168073G
168.3 x 76.1	20.7	20.7	▪	▪	VK-CRG-168076P	VK-CRG-168076G
168.3 x 88.9	20.7	20.7	▪	▪	VK-CRG-168089P	VK-CRG-168089G
168.3 x 114.3	20.7	20.7	▪	-	VK-CRG-168114P	VK-CRG-168114G
168.3 x 139.7	20.7	-	▪	-	VK-CRG-168139P	VK-CRG-168139G
219.1 x 60.3	20.7	27.6	▪	▪	VK-CRG-219060P	VK-CRG-219060G
219.1 x 73.0	20.7	27.6	▪	▪	VK-CRG-219073P	VK-CRG-219073G
219.1 x 76.1	20.7	27.6	▪	▪	VK-CRG-219076P	VK-CRG-219076G
219.1 x 88.9	20.7	27.6	▪	▪	VK-CRG-219089P	VK-CRG-219089G
219.1 x 114.3	20.7	16.0	▪	▪	VK-CRG-219114P	VK-CRG-219114G
219.1 x 139.7	20.7	16.0	▪	▪	VK-CRG-219139P	VK-CRG-219139G
219.1 x 141.3	16.0	-	▪	-	VK-CRG-219141P	VK-CRG-219141G
219.1 x 165.1	16.0	16.0	▪	▪	VK-CRG-219165P	VK-CRG-219165G
219.1 x 168.3	20.7	27.6	▪	▪	VK-CRG-219168P	VK-CRG-219168G
273.0 x 114.3	20.7	27.6	▪	▪	VK-CRG-273114P	VK-CRG-273114G
273.0 x 165.1	-	16.0	-	▪	VK-CRG-273165P	VK-CRG-273165G
273.0 x 168.3	20.7	27.6	▪	▪	VK-CRG-273168P	VK-CRG-273168G
273.0 x 219.1	20.7	27.6	▪	▪	VK-CRG-273219P	VK-CRG-273219G
323.9 x 114.3	-	16.0	-	▪	VK-CRG-324114P	VK-CRG-324114G
323.9 x 139.7	-	16.0	-	▪	VK-CRG-324139P	VK-CRG-324139G
323.9 x 165.1	-	16.0	-	▪	VK-CRG-324165P	VK-CRG-324165G
323.9 x 219.1	-	16.0	-	▪	VK-CRG-324219P	VK-CRG-324219G
323.9 x 273.0	-	16.0	-	▪	VK-CRG-324273P	VK-CRG-324273G



Grooved Fittings

Concentric reducer | Threaded NPT | VK-CRT



- From 48.3 mm x 1" NPT to 219.1 mm x 4" NPT
- UL and FM approvals (depending on specific size)
- Available in painted red and galvanised (Epoxy red available on request)



Size (mm x inch)	Threaded NPT					
	Max. working pressure (bar)		Approvals		Part number	
	UL	FM	UL	FM	Painted red	Galvanised
48.3 x 1"	16.0	-	■	-	VK-CRT-048034NP	VK-CRT-048034NG
60.3 x 1"	20.7	34.5	■	■	VK-CRT-060034NP	VK-CRT-060034NG
60.3 x 1-1/4"	20.7	34.5	■	■	VK-CRT-060042NP	VK-CRT-060042NG
60.3 x 1-1/2"	20.7	34.5	■	■	VK-CRT-060048NP	VK-CRT-060048NG
73.0 x 1"	27.6	27.6	■	■	VK-CRT-073034NP	VK-CRT-073034NG
73.0 x 1-1/4"	27.6	27.6	■	■	VK-CRT-073042NP	VK-CRT-073042NG
73.0 x 1-1/2"	27.6	27.6	■	■	VK-CRT-073048NP	VK-CRT-073048NG
73.0 x 2"	27.6	27.6	■	■	VK-CRT-073060NP	VK-CRT-073060NG
76.1 x 1"	20.7	34.5	■	■	VK-CRT-076034NP	VK-CRT-076034NG
76.1 x 1-1/4"	20.7	34.5	■	■	VK-CRT-076042NP	VK-CRT-076042NG
76.1 x 1-1/2"	20.7	34.5	■	■	VK-CRT-076048NP	VK-CRT-076048NG
76.1 x 2"	20.7	34.5	■	■	VK-CRT-076060NP	VK-CRT-076060NG
88.9 x 1"	20.7	34.5	■	■	VK-CRT-089034NP	VK-CRT-089034NG
88.9 x 1-1/4"	20.7	34.5	■	■	VK-CRT-089042NP	VK-CRT-089042NG
88.9 x 1-1/2"	20.7	34.5	■	■	VK-CRT-089048NP	VK-CRT-089048NG
88.9 x 2"	20.7	34.5	■	■	VK-CRT-089060NP	VK-CRT-089060NG
88.9 x 2-1/2"	16.0	-	■	-	VK-CRT-089076NP	VK-CRT-089076NG
114.3 x 1"	20.7	34.5	■	■	VK-CRT-114034NP	VK-CRT-114034NG
114.3 x 1-1/4"	20.7	34.5	■	■	VK-CRT-114042NP	VK-CRT-114042NG
114.3 x 1-1/2"	20.7	34.5	■	■	VK-CRT-114048NP	VK-CRT-114048NG
114.3 x 2"	20.7	34.5	■	■	VK-CRT-114060NP	VK-CRT-114060NG
114.3 x 2-1/2"	20.7	34.5	■	■	VK-CRT-114076NP	VK-CRT-114076NG
114.3 x 3"	20.7	34.5	■	■	VK-CRT-114089NP	VK-CRT-114089NG
139.7 x 1"	20.7	34.5	■	■	VK-CRT-139034NP	VK-CRT-139034NG
139.7 x 1-1/4"	20.7	27.6	■	■	VK-CRT-139042NP	VK-CRT-139042NG
139.7 x 1-1/2"	20.7	27.6	■	■	VK-CRT-139048NP	VK-CRT-139048NG
139.7 x 2"	20.7	27.6	■	■	VK-CRT-139060NP	VK-CRT-139060NG
139.7 x 2-1/2"	20.7	27.6	■	■	VK-CRT-139076NP	VK-CRT-139076NG
139.7 x 3"	20.7	27.6	■	■	VK-CRT-139089NP	VK-CRT-139089NG

Table continued on next page

Grooved Fittings

Concentric reducer | Threaded NPT | VK-CRT (continued)

Size (mm x inch)	Threaded NPT					
	Max. working pressure (bar)		Approvals		Part number	
	UL	FM	UL	FM	Painted red	Galvanised
141.3 x 1"	16.0	-	▪	-	VK-CRT-141034NP	VK-CRT-141034NG
141.3 x 1-1/4"	16.0	-	▪	-	VK-CRT-141042NP	VK-CRT-141042NG
141.3 x 2"	16.0	-	▪	-	VK-CRT-141060NP	VK-CRT-141060NG
141.3 x 2-1/2"	16.0	-	▪	-	VK-CRT-141076NP	VK-CRT-141076NG
165.1 x 1"	20.7	-	▪	-	VK-CRT-165034NP	VK-CRT-165034NG
165.1 x 1-1/4"	20.7	27.6	▪	▪	VK-CRT-165042NP	VK-CRT-165042NG
165.1 x 1-1/2"	20.7	27.6	▪	▪	VK-CRT-165048NP	VK-CRT-165048NG
165.1 x 2"	20.7	27.6	▪	▪	VK-CRT-165060NP	VK-CRT-165060NG
165.1 x 2-1/2"	20.7	27.6	▪	▪	VK-CRT-165076NP	VK-CRT-165076NG
165.1 x 3"	20.7	27.6	▪	▪	VK-CRT-165089NP	VK-CRT-165089NG
165.1 x 4"	20.7	27.6	▪	▪	VK-CRT-165114NP	VK-CRT-165114NG
168.3 x 1"	20.7	27.6	▪	▪	VK-CRT-168034NP	VK-CRT-168034NG
168.3 x 1-1/4"	20.7	27.6	▪	▪	VK-CRT-168042NP	VK-CRT-168042NG
168.3 x 1-1/2"	20.7	27.6	▪	▪	VK-CRT-168048NP	VK-CRT-168048NG
168.3 x 2"	20.7	27.6	▪	▪	VK-CRT-168060NP	VK-CRT-168060NG
168.3 x 2-1/2"	20.7	27.6	▪	▪	VK-CRT-168076NP	VK-CRT-168076NG
168.3 x 3"	20.7	27.6	▪	▪	VK-CRT-168089NP	VK-CRT-168089NG
168.3 x 4"	20.7	27.6	▪	▪	VK-CRT-168114NP	VK-CRT-168114NG
219.1 x 1"	20.7	20.7	▪	▪	VK-CRT-219034NP	VK-CRT-219034NG
219.1 x 1-1/4"	20.7	20.7	▪	▪	VK-CRT-219042NP	VK-CRT-219042NG
219.1 x 1-1/2"	20.7	20.7	▪	▪	VK-CRT-219048NP	VK-CRT-219048NG
219.1 x 2"	20.7	20.7	▪	▪	VK-CRT-219060NP	VK-CRT-219060NG
219.1 x 2-1/2"	20.7	20.7	▪	▪	VK-CRT-219076NP	VK-CRT-219076NG
219.1 x 3"	20.7	20.7	▪	▪	VK-CRT-219089NP	VK-CRT-219089NG
219.1 x 4"	20.7	20.7	▪	▪	VK-CRT-219114NP	VK-CRT-219114NG



Grooved Fittings

Concentric reducer | Threaded BSP | VK-CRT



- From 48.3 mm x DN25 BSP to 219.1 mm x DN100 BSP
- UL and FM approvals (depending on specific size)
- Available in painted red and galvanised (Epoxy red available on request)



Size (mm x DN)	Max. working pressure (bar)		Approvals		Part number	
	UL	FM	Threaded BSP		Painted red	Galvanised
			UL	FM		
48.3 x DN25	16.0	-	▪	-	VK-CRT-048034BP	VK-CRT-048034BG
60.3 x DN25	20.7	34.5	▪	▪	VK-CRT-060034BP	VK-CRT-060034BG
60.3 x DN32	20.7	34.5	▪	▪	VK-CRT-060042BP	VK-CRT-060042BG
60.3 x DN40	20.7	34.5	▪	▪	VK-CRT-060048BP	VK-CRT-060048BG
73.0 x DN25	27.6	27.6	▪	▪	VK-CRT-073034BP	VK-CRT-073034BG
73.0 x DN32	27.6	27.6	▪	▪	VK-CRT-073042BP	VK-CRT-073042BG
73.0 x DN40	27.6	27.6	▪	▪	VK-CRT-073048BP	VK-CRT-073048BG
73.0 x DN50	27.6	27.6	▪	▪	VK-CRT-073060BP	VK-CRT-073060BG
76.1 x DN25	20.7	34.5	▪	▪	VK-CRT-076034BP	VK-CRT-076034BG
76.1 x DN32	20.7	34.5	▪	▪	VK-CRT-076042BP	VK-CRT-076042BG
76.1 x DN40	20.7	34.5	▪	▪	VK-CRT-076048BP	VK-CRT-076048BG
76.1 x DN50	20.7	34.5	▪	▪	VK-CRT-076060BP	VK-CRT-076060BG
88.9 x DN25	20.7	34.5	▪	▪	VK-CRT-089034BP	VK-CRT-089034BG
88.9 x DN32	20.7	34.5	▪	▪	VK-CRT-089042BP	VK-CRT-089042BG
88.9 x DN40	20.7	34.5	▪	▪	VK-CRT-089048BP	VK-CRT-089048BG
88.9 x DN50	20.7	34.5	▪	▪	VK-CRT-089060BP	VK-CRT-089060BG
88.9 x DN65	16.0	-	▪	-	VK-CRT-089076BP	VK-CRT-089076BG
114.3 x DN25	20.7	34.5	▪	▪	VK-CRT-114034BP	VK-CRT-114034BG
114.3 x DN32	20.7	34.5	▪	▪	VK-CRT-114042BP	VK-CRT-114042BG
114.3 x DN40	20.7	34.5	▪	▪	VK-CRT-114048BP	VK-CRT-114048BG
114.3 x DN50	20.7	34.5	▪	▪	VK-CRT-114060BP	VK-CRT-114060BG
114.3 x DN65	20.7	34.5	▪	▪	VK-CRT-114076BP	VK-CRT-114076BG
114.3 x DN80	20.7	34.5	▪	▪	VK-CRT-114089BP	VK-CRT-114089BG
139.7 x DN25	20.7	34.5	▪	▪	VK-CRT-139034BP	VK-CRT-139034BG
139.7 x DN32	20.7	27.6	▪	▪	VK-CRT-139042BP	VK-CRT-139042BG
139.7 x DN40	20.7	27.6	▪	▪	VK-CRT-139048BP	VK-CRT-139048BG
139.7 x DN50	20.7	27.6	▪	▪	VK-CRT-139060BP	VK-CRT-139060BG
139.7 x DN65	20.7	27.6	▪	▪	VK-CRT-139076BP	VK-CRT-139076BG
139.7 x DN80	20.7	27.6	▪	▪	VK-CRT-139089BP	VK-CRT-139089BG

Table continued on next page

Grooved Fittings

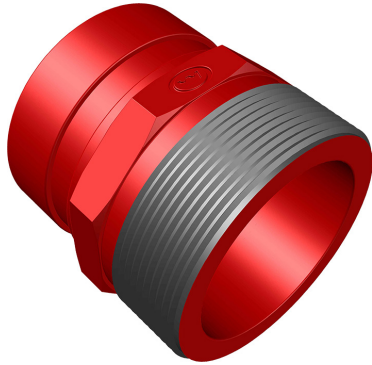
Concentric reducer | Threaded BSP | VK-CRT (continued)

Size (mm x DN)	Threaded BSP					
	Max. working pressure (bar)		Approvals		Part number	
	UL	FM	UL	FM	Painted red	Galvanised
141.3 x DN25	16.0	-	▪	-	VK-CRT-141034BP	VK-CRT-141034BG
141.3 x DN32	16.0	-	▪	-	VK-CRT-141042BP	VK-CRT-141042BG
141.3 x DN50	16.0	-	▪	-	VK-CRT-141060BP	VK-CRT-141060BG
141.3 x DN65	16.0	-	▪	-	VK-CRT-141076BP	VK-CRT-141076BG
165.1 x DN25	20.7	-	▪	-	VK-CRT-165034BP	VK-CRT-165034BG
165.1 x DN32	20.7	27.6	▪	▪	VK-CRT-165042BP	VK-CRT-165042BG
165.1 x DN40	20.7	27.6	▪	▪	VK-CRT-165048BP	VK-CRT-165048BG
165.1 x DN50	20.7	27.6	▪	▪	VK-CRT-165060BP	VK-CRT-165060BG
165.1 x DN65	20.7	27.6	▪	▪	VK-CRT-165076BP	VK-CRT-165076BG
165.1 x DN80	20.7	27.6	▪	▪	VK-CRT-165089BP	VK-CRT-165089BG
165.1 x DN100	20.7	27.6	▪	▪	VK-CRT-165114BP	VK-CRT-165114BG
168.3 x DN25	20.7	27.6	▪	▪	VK-CRT-168034BP	VK-CRT-168034BG
168.3 x DN32	20.7	27.6	▪	▪	VK-CRT-168042BP	VK-CRT-168042BG
168.3 x DN40	20.7	27.6	▪	▪	VK-CRT-168048BP	VK-CRT-168048BG
168.3 x DN50	20.7	27.6	▪	▪	VK-CRT-168060BP	VK-CRT-168060BG
168.3 x DN65	20.7	27.6	▪	▪	VK-CRT-168076BP	VK-CRT-168076BG
168.3 x DN80	20.7	27.6	▪	▪	VK-CRT-168089BP	VK-CRT-168089BG
168.3 x DN100	20.7	27.6	▪	▪	VK-CRT-168114BP	VK-CRT-168114BG
219.1 x DN25	20.7	20.7	▪	▪	VK-CRT-219034BP	VK-CRT-219034BG
219.1 x DN32	20.7	20.7	▪	▪	VK-CRT-219042BP	VK-CRT-219042BG
219.1 x DN40	20.7	20.7	▪	▪	VK-CRT-219048BP	VK-CRT-219048BG
219.1 x DN50	20.7	20.7	▪	▪	VK-CRT-219060BP	VK-CRT-219060BG
219.1 x DN65	20.7	20.7	▪	▪	VK-CRT-219076BP	VK-CRT-219076BG
219.1 x DN80	20.7	20.7	▪	▪	VK-CRT-219089BP	VK-CRT-219089BG
219.1 x DN100	20.7	20.7	▪	▪	VK-CRT-219114BP	VK-CRT-219114BG



Grooved Fittings

Adapter nipple | VK-AN



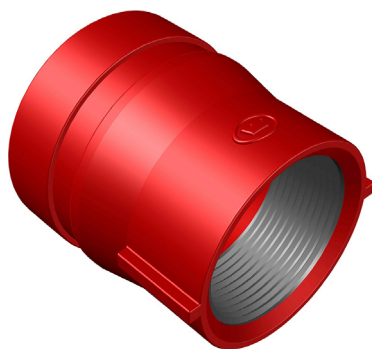
- From 48.3 mm x 1-1/2" NPT (DN40 BSP) to 60.3 mm x 2" NPT (DN50 BSP)
- UL and FM approvals
- Available in painted red (Epoxy red available on request)



Size (mm x inch)	Max. working pressure (bar)		Approvals		Part number
	Threaded NPT		Threaded NPT		
	UL	FM	UL	FM	
48.3 x 1-1/2"	34.5	34.5	▪	▪	VK-AN-048NP
60.3 x 2"	34.5	34.5	▪	▪	VK-AN-060NP

Size (mm x DN)	Max. working pressure (bar)		Approvals		Part number
	Threaded BSP		Threaded BSP		
	UL	FM	UL	FM	
48.3 x DN40	34.5	34.5	▪	▪	VK-AN-048BP
60.3 x DN50	34.5	34.5	▪	▪	VK-AN-060BP

Adapter nipple | Reducer | VK-ANR



- From 48.3 mm x 1" NPT (DN25 BSP) to 60.3 mm x 1-1/2" NPT (DN40 BSP)
- UL and FM approvals
- Available in painted red (Epoxy red available on request)



Size (mm x inch)	Max. working pressure (bar)		Approvals		Part number
	Threaded NPT		Threaded NPT		
	UL	FM	UL	FM	
48.3 x 1"	34.5	34.5	▪	▪	VK-ANR-04825NP
60.3 x 1-1/2"	34.5	34.5	▪	▪	VK-ANR-06040NP

Size (mm x DN)	Max. working pressure (bar)		Approvals		Part number
	Threaded BSP		Threaded BSP		
	UL	FM	UL	FM	
48.3 x DN25	34.5	34.5	▪	▪	VK-ANR-04825BP
60.3 x DN40	34.5	34.5	▪	▪	VK-ANR-06040BP

Grooved Fittings

End all | VK-EA



- From 42.4 mm x 1/2" NPT (DN15 BSP) to 73.0 mm x 1" NPT (DN25 BSP)
- UL and FM approvals
- Available in painted red and galvanised (Epoxy red available on request)



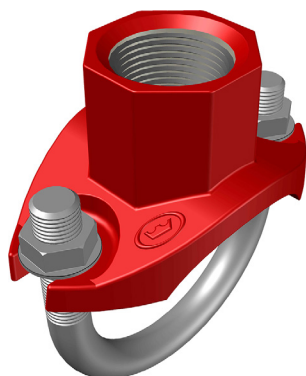
Size (mm x inch)	Max. working pressure (bar)		Approvals		Part number	
	UL	FM	Threaded NPT		Painted red	Galvanised
			UL	FM		
42.4 x 1/2"	34.5	34.5	■	■	VK-EA-042021NP	VK-EA-042021NG
42.4 x 3/4"	34.5	34.5	■	■	VK-EA-042027NP	VK-EA-042027NG
42.4 x 1"	34.5	34.5	■	■	VK-EA-042034NP	VK-EA-042034NG
48.3 x 1/2"	34.5	34.5	■	■	VK-EA-048021NP	VK-EA-048021NG
48.3 x 3/4"	34.5	34.5	■	■	VK-EA-048027NP	VK-EA-048027NG
48.3 x 1"	34.5	34.5	■	■	VK-EA-048034NP	VK-EA-048034NG
60.3 x 1/2"	34.5	34.5	■	■	VK-EA-060021NP	VK-EA-060021NG
60.3 x 3/4"	34.5	34.5	■	■	VK-EA-060027NP	VK-EA-060027NG
60.3 x 1"	34.5	34.5	■	■	VK-EA-060034NP	VK-EA-060034NG
73.0 x 1/2"	34.5	34.5	■	■	VK-EA-073021NP	VK-EA-073021NG
73.0 x 3/4"	34.5	34.5	■	■	VK-EA-073027NP	VK-EA-073027NG
73.0 x 1"	34.5	34.5	■	■	VK-EA-073034NP	VK-EA-073034NG

Size (mm x DN)	Max. working pressure (bar)		Approvals		Part number	
	UL	FM	Threaded BSP		Painted red	Galvanised
			UL	FM		
42.4 x DN15	34.5	34.5	■	■	VK-EA-042021BP	VK-EA-042021BG
42.4 x DN20	34.5	34.5	■	■	VK-EA-042027BP	VK-EA-042027BG
42.4 x DN25	34.5	34.5	■	■	VK-EA-042034BP	VK-EA-042034BG
48.3 x DN15	34.5	34.5	■	■	VK-EA-048021BP	VK-EA-048021BG
48.3 x DN20	34.5	34.5	■	■	VK-EA-048027BP	VK-EA-048027BG
48.3 x DN25	34.5	34.5	■	■	VK-EA-048034BP	VK-EA-048034BG
60.3 x DN15	34.5	34.5	■	■	VK-EA-060021BP	VK-EA-060021BG
60.3 x DN20	34.5	34.5	■	■	VK-EA-060027BP	VK-EA-060027BG
60.3 x DN25	34.5	34.5	■	■	VK-EA-060034BP	VK-EA-060034BG
73.0 x DN15	34.5	34.5	■	■	VK-EA-073021BP	VK-EA-073021BG
73.0 x DN20	34.5	34.5	■	■	VK-EA-073027BP	VK-EA-073027BG
73.0 x DN25	34.5	34.5	■	■	VK-EA-073034BP	VK-EA-073034BG



Gasketed Fittings

Sprinkler tee | VK-ST



- From 33.7 mm x 1/2" NPT (DN15 BSP) to 76.1 mm x 1" NPT (DN25 BSP)
- UL and FM approvals
- Available in painted red and galvanised (Epoxy red available on request)

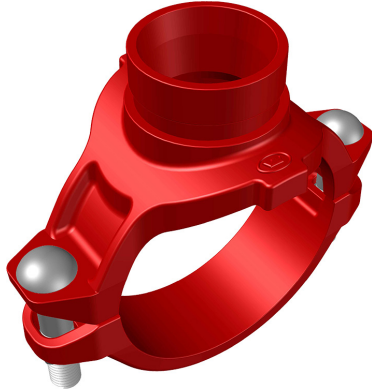


Size (mm x inch)	Threaded NPT					
	Max. working pressure (bar)		Approvals		Part number	
	UL	FM	UL	FM	Painted red	Galvanised
33.7 x 1/2"	20.7	20.7	■	■	VK-ST-034021NP	VK-ST-034021NG
33.7 x 3/4"	20.7	20.7	■	■	VK-ST-034027NP	VK-ST-034027NG
42.4 x 1/2"	20.7	20.7	■	■	VK-ST-042021NP	VK-ST-042021NG
42.4 x 3/4"	20.7	20.7	■	■	VK-ST-042027NP	VK-ST-042027NG
42.4 x 1"	20.7	20.7	■	■	VK-ST-042034NP	VK-ST-042034NG
48.3 x 1/2"	20.7	20.7	■	■	VK-ST-048021NP	VK-ST-048021NG
48.3 x 3/4"	20.7	20.7	■	■	VK-ST-048027NP	VK-ST-048027NG
48.3 x 1"	20.7	20.7	■	■	VK-ST-048034NP	VK-ST-048034NG
60.3 x 1/2"	20.7	20.7	■	■	VK-ST-060021NP	VK-ST-060021NG
60.3 x 3/4"	20.7	20.7	■	■	VK-ST-060027NP	VK-ST-060027NG
60.3 x 1"	20.7	20.7	■	■	VK-ST-060034NP	VK-ST-060034NG
73.0 x 1/2"	20.7	20.7	■	■	VK-ST-073021NP	VK-ST-073021NG
73.0 x 3/4"	20.7	20.7	■	■	VK-ST-073027NP	VK-ST-073027NG
73.0 x 1"	20.7	20.7	■	■	VK-ST-073034NP	VK-ST-073034NG
76.1 x 1/2"	20.7	20.7	■	■	VK-ST-076021NP	VK-ST-076021NG
76.1 x 3/4"	20.7	20.7	■	■	VK-ST-076027NP	VK-ST-076027NG
76.1 x 1"	20.7	20.7	■	■	VK-ST-076034NP	VK-ST-076034NG

Size (mm x DN)	Threaded BSP					
	Max. working pressure (bar)		Approvals		Part number	
	UL	FM	UL	FM	Painted red	Galvanised
33.7 x DN15	20.7	20.7	■	■	VK-ST-034021BP	VK-ST-034021BG
33.7 x DN20	20.7	20.7	■	■	VK-ST-034027BP	VK-ST-034027BG
42.4 x DN15	20.7	20.7	■	■	VK-ST-042021BP	VK-ST-042021BG
42.4 x DN20	20.7	20.7	■	■	VK-ST-042027BP	VK-ST-042027BG
42.4 x DN25	20.7	20.7	■	■	VK-ST-042034BP	VK-ST-042034BG
48.3 x DN15	20.7	20.7	■	■	VK-ST-048021BP	VK-ST-048021BG
48.3 x DN20	20.7	20.7	■	■	VK-ST-048027BP	VK-ST-048027BG
48.3 x DN25	20.7	20.7	■	■	VK-ST-048034BP	VK-ST-048034BG
60.3 x DN15	20.7	20.7	■	■	VK-ST-060021BP	VK-ST-060021BG
60.3 x DN20	20.7	20.7	■	■	VK-ST-060027BP	VK-ST-060027BG
60.3 x DN25	20.7	20.7	■	■	VK-ST-060034BP	VK-ST-060034BG
73.0 x DN15	20.7	20.7	■	■	VK-ST-073021BP	VK-ST-073021BG
73.0 x DN20	20.7	20.7	■	■	VK-ST-073027BP	VK-ST-073027BG
73.0 x DN25	20.7	20.7	■	■	VK-ST-073034BP	VK-ST-073034BG
76.1 x DN15	20.7	20.7	■	■	VK-ST-076021BP	VK-ST-076021BG
76.1 x DN20	20.7	20.7	■	■	VK-ST-076027BP	VK-ST-076027BG
76.1 x DN25	20.7	20.7	■	■	VK-ST-076034BP	VK-ST-076034BG

Gasketed Fittings

Mechanical tee | Grooved | VK-MTG & VK-MTG2



- From 60.3 mm x 33.7 mm to 219.1 mm x 114.3 mm
- UL and FM approvals (depending on specific size)
- Available in painted red and galvanised (Epoxy red available on request)



Size (mm)	Max. working pressure (bar)		Approvals		Part number	
	UL	FM	UL	FM	Painted red	Galvanised
60.3 x 33.7	20.7	20.7	■	■	VK-MTG2-060034P	VK-MTG2-060034G
60.3 x 42.4	20.7	20.7	■	■	VK-MTG-060042P	VK-MTG-060042G
60.3 x 48.3	20.7	20.7	■	■	VK-MTG-060048P	VK-MTG-060048G
73.0 x 33.7	20.7	-	■	-	VK-MTG2-073034P	VK-MTG2-073034G
73.0 x 42.4	20.7	20.7	■	■	VK-MTG-073042P	VK-MTG-073042G
73.0 x 48.3	20.7	20.7	■	■	VK-MTG-073048P	VK-MTG-073048G
76.1 x 33.7	20.7	20.7	■	■	VK-MTG2-076034P	VK-MTG2-076034G
76.1 x 42.4	20.7	20.7	■	■	VK-MTG2-076042P	VK-MTG2-076042G
76.1 x 48.3	20.7	20.7	■	■	VK-MTG2-076048P	VK-MTG2-076048G
88.9 x 33.7	20.7	20.7	■	■	VK-MTG2-089034P	VK-MTG2-089034G
88.9 x 42.4	20.7	20.7	■	■	VK-MTG-089042P	VK-MTG-089042G
88.9 x 48.3	20.7	20.7	■	■	VK-MTG-089048P	VK-MTG-089048G
88.9 x 60.3	20.7	20.7	■	■	VK-MTG-089060P	VK-MTG-089060G
114.3 x 33.7	20.7	20.7	■	■	VK-MTG2-114034P	VK-MTG2-114034G
114.3 x 42.4	20.7	20.7	■	■	VK-MTG-114042P	VK-MTG-114042G
114.3 x 48.3	20.7	20.7	■	■	VK-MTG-114048P	VK-MTG-114048G
114.3 x 60.3	20.7	20.7	■	■	VK-MTG-114060P	VK-MTG-114060G
114.3 x 73.0	20.7	20.7	■	■	VK-MTG-114073P	VK-MTG-114073G
114.3 x 76.1	20.7	16.0	■	■	VK-MTG2-114076P	VK-MTG2-114076G
114.3 x 88.9	20.7	-	■	-	VK-MTG2-114089P	VK-MTG2-114089G
139.7 x 33.7	20.7	20.7	■	■	VK-MTG2-139034P	VK-MTG2-139034G
139.7 x 42.4	20.7	20.7	■	■	VK-MTG2-139042P	VK-MTG2-139042G
139.7 x 48.3	20.7	20.7	■	■	VK-MTG2-139048P	VK-MTG2-139048G
139.7 x 60.3	20.7	20.7	■	■	VK-MTG2-139060P	VK-MTG2-139060G
139.7 x 76.1	20.7	20.7	■	■	VK-MTG2-139076P	VK-MTG2-139076G
139.7 x 88.9	20.7	16.0	■	■	VK-MTG2-139089P	VK-MTG2-139089G
141.3 x 48.3	20.7	20.7	■	■	VK-MTG-141048P	VK-MTG-141048G
141.3 x 60.3	20.7	20.7	■	■	VK-MTG-141060P	VK-MTG-141060G
141.3 x 73.0	20.7	20.7	■	■	VK-MTG-141073P	VK-MTG-141073G

Table continued on next page



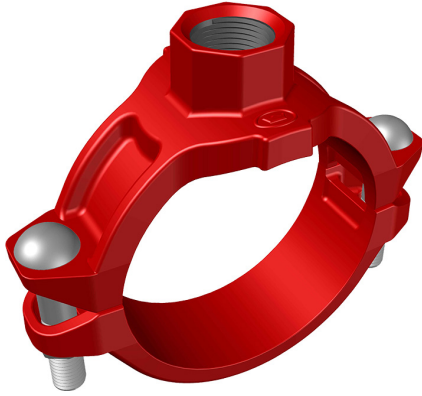
Gasketed Fittings

Mechanical tee | Grooved | VK-MTG & VK-MTG2 (continued)

Size (mm)	Max. working pressure (bar)		Approvals		Part number	
	UL	FM	UL	FM	Painted red	Galvanised
165.1 x 33.7	20.7	20.7	▪	▪	VK-MTG2-165034P	VK-MTG2-165034G
165.1 x 42.4	20.7	20.7	▪	▪	VK-MTG2-165042P	VK-MTG2-165042G
165.1 x 48.3	20.7	20.7	▪	▪	VK-MTG2-165048P	VK-MTG2-165048G
165.1 x 60.3	20.7	20.7	▪	▪	VK-MTG2-165060P	VK-MTG2-165060G
165.1 x 76.1	20.7	20.7	▪	▪	VK-MTG2-165076P	VK-MTG2-165076G
165.1 x 88.9	20.7	20.7	▪	▪	VK-MTG2-165089P	VK-MTG2-165089G
165.1 x 114.3	20.7	16.0	▪	▪	VK-MTG-165114P	VK-MTG-165114G
168.3 x 33.7	20.7	20.7	▪	▪	VK-MTG2-168034P	VK-MTG2-168034G
168.3 x 42.4	20.7	20.7	▪	▪	VK-MTG-168042P	VK-MTG-168042G
168.3 x 48.3	20.7	20.7	▪	▪	VK-MTG-168048P	VK-MTG-168048G
168.3 x 60.3	20.7	20.7	▪	▪	VK-MTG-168060P	VK-MTG-168060G
168.3 x 73.0	20.7	20.7	▪	▪	VK-MTG-168073P	VK-MTG-168073G
168.3 x 76.1	20.7	20.7	▪	▪	VK-MTG2-168076P	VK-MTG2-168076G
168.3 x 88.9	20.7	20.7	▪	▪	VK-MTG2-168089P	VK-MTG2-168089G
219.1 x 33.7	20.7	20.7	▪	▪	VK-MTG2-219034P	VK-MTG2-219034G
219.1 x 42.4	20.7	20.7	▪	▪	VK-MTG2-219042P	VK-MTG2-219042G
219.1 x 48.3	20.7	20.7	▪	▪	VK-MTG2-219048P	VK-MTG2-219048G
219.1 x 60.3	20.7	20.7	▪	▪	VK-MTG2-219060P	VK-MTG2-219060G
219.1 x 73.0	20.7	20.7	▪	▪	VK-MTG-219073P	VK-MTG-219073G
219.1 x 76.1	20.7	20.7	▪	▪	VK-MTG2-219076P	VK-MTG2-219076G
219.1 x 88.9	20.7	20.7	▪	▪	VK-MTG2-219089P	VK-MTG2-219089G
219.1 x 114.3	20.7	20.7	▪	▪	VK-MTG2-219114P	VK-MTG2-219114G

Gasketed Fittings

Mechanical tee | Threaded NPT | VK-MTT & VK-MTT2



- From 48.3 mm x 1" NPT to 219.1 mm x 4" NPT
- UL and FM approvals (depending on specific size)
- Available in painted red and galvanised (Epoxy red available on request)



Size (mm x inch)	Max. working pressure (bar)		Approvals		Part number	
	UL	FM	UL	FM	Painted red	Galvanised
48.3 x 1"	16.0	-	■	-	VK-MTT2-048034NP	VK-MTT2-048034NG
60.3 x 1/2"	20.7	20.7	■	■	VK-MTT-060021NP	VK-MTT-060021NG
60.3 x 3/4"	20.7	20.7	■	■	VK-MTT-060027NP	VK-MTT-060027NG
60.3 x 1"	20.7	20.7	■	■	VK-MTT-060034NP	VK-MTT-060034NG
60.3 x 1-1/4"	20.7	20.7	■	■	VK-MTT-060042NP	VK-MTT-060042NG
60.3 x 1-1/2"	20.7	20.7	■	■	VK-MTT-060048NP	VK-MTT-060048NG
73.0 x 1/2"	20.7	20.7	■	■	VK-MTT-073021NP	VK-MTT-073021NG
73.0 x 3/4"	20.7	20.7	■	■	VK-MTT-073027NP	VK-MTT-073027NG
73.0 x 1"	20.7	20.7	■	■	VK-MTT-073034NP	VK-MTT-073034NG
73.0 x 1-1/4"	20.7	20.7	■	■	VK-MTT-073042NP	VK-MTT-073042NG
73.0 x 1-1/2"	20.7	20.7	■	■	VK-MTT-073048NP	VK-MTT-073048NG
76.1 x 1"	20.7	20.7	■	■	VK-MTT2-076034NP	VK-MTT2-076034NG
76.1 x 1-1/4"	20.7	20.7	■	■	VK-MTT2-076042NP	VK-MTT2-076042NG
76.1 x 1-1/2"	20.7	20.7	■	■	VK-MTT2-076048NP	VK-MTT2-076048NG
76.1 x 2"	16.0	-	■	-	VK-MTT2-076060NP	VK-MTT2-076060NG
88.9 x 1/2"	20.7	20.7	■	■	VK-MTT-089021NP	VK-MTT-089021NG
88.9 x 3/4"	20.7	20.7	■	■	VK-MTT-089027NP	VK-MTT-089027NG
88.9 x 1"	20.7	20.7	■	■	VK-MTT-089034NP	VK-MTT-089034NG
88.9 x 1-1/4"	20.7	20.7	■	■	VK-MTT-089042NP	VK-MTT-089042NG
88.9 x 1-1/2"	20.7	20.7	■	■	VK-MTT-089048NP	VK-MTT-089048NG
88.9 x 2"	20.7	20.7	■	■	VK-MTT-089060NP	VK-MTT-089060NG
114.3 x 1/2"	20.7	20.7	■	■	VK-MTT-114021NP	VK-MTT-114021NG
114.3 x 3/4"	20.7	20.7	■	■	VK-MTT-114027NP	VK-MTT-114027NG
114.3 x 1"	20.7	20.7	■	■	VK-MTT-114034NP	VK-MTT-114034NG
114.3 x 1-1/4"	20.7	20.7	■	■	VK-MTT-114042NP	VK-MTT-114042NG
114.3 x 1-1/2"	20.7	20.7	■	■	VK-MTT-114048NP	VK-MTT-114048NG
114.3 x 2"	20.7	20.7	■	■	VK-MTT-114060NP	VK-MTT-114060NG
114.3 x 2-1/2"	20.7	20.7	■	■	VK-MTT-114073NP	VK-MTT-114073NG
114.3 x 2-1/2"	20.7	20.7	■	■	VK-MTT2-114076NP	VK-MTT2-114076NG
139.7 x 1"	20.7	20.7	■	■	VK-MTT2-139034NP	VK-MTT2-139034NG
139.7 x 1-1/4"	20.7	20.7	■	■	VK-MTT2-139042NP	VK-MTT2-139042NG
139.7 x 1-1/2"	20.7	20.7	■	■	VK-MTT2-139048NP	VK-MTT2-139048NG

Table continued on next page



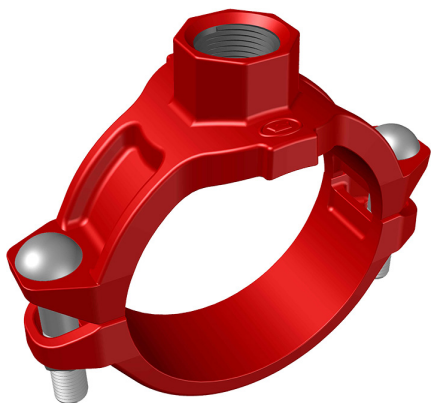
Gasketed Fittings

Mechanical tee | Threaded NPT | VK-MTT & VK-MTT2 (continued)

Size (mm x inch)	Threaded NPT					
	Max. working pressure (bar)		Approvals		Part number	
	UL	FM	UL	FM	Painted red	Galvanised
139.7 x 2"	20.7	20.7	▪	▪	VK-MTT2-139060NP	VK-MTT2-139060NG
139.7 x 2-1/2"	20.7	20.7	▪	▪	VK-MTT2-139076NP	VK-MTT2-139076NG
139.7 x 3"	20.7	20.7	▪	▪	VK-MTT2-139089NP	VK-MTT2-139089NG
141.3 x 1"	20.7	20.7	▪	▪	VK-MTT-141034NP	VK-MTT-141034NG
141.3 x 1-1/4"	20.7	20.7	▪	▪	VK-MTT-141042NP	VK-MTT-141042NG
141.3 x 1-1/2"	20.7	20.7	▪	▪	VK-MTT-141048NP	VK-MTT-141048NG
141.3 x 2"	20.7	20.7	▪	▪	VK-MTT-141060NP	VK-MTT-141060NG
141.3 x 2-1/2"	20.7	20.7	▪	▪	VK-MTT-141073NP	VK-MTT-141073NG
165.1 x 1"	20.7	20.7	▪	▪	VK-MTT2-165034NP	VK-MTT2-165034NG
165.1 x 1-1/4"	20.7	20.7	▪	▪	VK-MTT2-165042NP	VK-MTT2-165042NG
165.1 x 1-1/2"	20.7	20.7	▪	▪	VK-MTT2-165048NP	VK-MTT2-165048NG
165.1 x 2"	20.7	20.7	▪	▪	VK-MTT2-165060NP	VK-MTT2-165060NG
165.1 x 2-1/2"	20.7	20.7	▪	▪	VK-MTT2-165076NP	VK-MTT2-165076NG
165.1 x 3"	20.7	20.7	▪	▪	VK-MTT2-165089NP	VK-MTT2-165089NG
168.3 x 1"	20.7	20.7	▪	▪	VK-MTT2-168034NP	VK-MTT2-168034NG
168.3 x 1-1/4"	20.7	20.7	▪	▪	VK-MTT-168042NP	VK-MTT-168042NG
168.3 x 1-1/2"	20.7	20.7	▪	▪	VK-MTT-168048NP	VK-MTT-168048NG
168.3 x 2"	20.7	20.7	▪	▪	VK-MTT-168060NP	VK-MTT-168060NG
168.3 x 2-1/2"	20.7	20.7	▪	▪	VK-MTT-168073NP	VK-MTT-168073NG
168.3 x 2-1/2"	20.7	20.7	▪	▪	VK-MTT2-168076NP	VK-MTT2-168076NG
168.3 x 3"	20.7	20.7	▪	▪	VK-MTT2-168089NP	VK-MTT2-168089NG
219.1 x 1"	20.7	20.7	▪	▪	VK-MTT2-219034NP	VK-MTT2-219034NG
219.1 x 1-1/4"	20.7	20.7	▪	▪	VK-MTT2-219042NP	VK-MTT2-219042NG
219.1 x 1-1/2"	20.7	20.7	▪	▪	VK-MTT2-219048NP	VK-MTT2-219048NG
219.1 x 2"	20.7	20.7	▪	▪	VK-MTT2-219060NP	VK-MTT2-219060NG
219.1 x 2-1/2"	20.7	20.7	▪	▪	VK-MTT2-219076NP	VK-MTT2-219076NG
219.1 x 3"	20.7	20.7	▪	▪	VK-MTT2-219089NP	VK-MTT2-219089NG
219.1 x 4"	20.7	20.7	▪	▪	VK-MTT2-219114NP	VK-MTT2-219114NG

Gasketed Fittings

Mechanical tee | Threaded BSP | VK-MTT & VK-MTT2



- From 48.3 mm x DN25 BSP to 219.1 mm x DN100 BSP
- UL and FM approvals (depending on specific size)
- Available in painted red and galvanised (Epoxy red available on request)



Size (mm x DN)	Threaded BSP					
	Max. working pressure (bar)		Approvals		Part number	
	UL	FM	UL	FM	Painted red	Galvanised
48.3 x DN25	16.0	-	■	-	VK-MTT2-048034BP	VK-MTT2-048034BG
60.3 x DN15	20.7	20.7	■	■	VK-MTT-060021BP	VK-MTT-060021BG
60.3 x DN20	20.7	20.7	■	■	VK-MTT-060027BP	VK-MTT-060027BG
60.3 x DN25	20.7	20.7	■	■	VK-MTT-060034BP	VK-MTT-060034BG
60.3 x DN32	20.7	20.7	■	■	VK-MTT-060042BP	VK-MTT-060042BG
60.3 x DN40	20.7	20.7	■	■	VK-MTT-060048BP	VK-MTT-060048BG
73.0 x DN15	20.7	20.7	■	■	VK-MTT-073021BP	VK-MTT-073021BG
73.0 x DN20	20.7	20.7	■	■	VK-MTT-073027BP	VK-MTT-073027BG
73.0 x DN25	20.7	20.7	■	■	VK-MTT-073034BP	VK-MTT-073034BG
73.0 x DN32	20.7	20.7	■	■	VK-MTT-073042BP	VK-MTT-073042BG
73.0 x DN40	20.7	20.7	■	■	VK-MTT-073048BP	VK-MTT-073048BG
76.1 x DN25	20.7	20.7	■	■	VK-MTT2-076034BP	VK-MTT2-076034BG
76.1 x DN32	20.7	20.7	■	■	VK-MTT2-076042BP	VK-MTT2-076042BG
76.1 x DN40	20.7	20.7	■	■	VK-MTT2-076048BP	VK-MTT2-076048BG
76.1 x DN50	16.0	-	■	-	VK-MTT2-076060BP	VK-MTT2-076060BG
88.9 x DN15	20.7	20.7	■	■	VK-MTT-089021BP	VK-MTT-089021BG
88.9 x DN20	20.7	20.7	■	■	VK-MTT-089027BP	VK-MTT-089027BG
88.9 x DN25	20.7	20.7	■	■	VK-MTT-089034BP	VK-MTT-089034BG
88.9 x DN32	20.7	20.7	■	■	VK-MTT-089042BP	VK-MTT-089042BG
88.9 x DN40	20.7	20.7	■	■	VK-MTT-089048BP	VK-MTT-089048BG
88.9 x DN50	20.7	20.7	■	■	VK-MTT-089060BP	VK-MTT-089060BG
114.3 x DN15	20.7	20.7	■	■	VK-MTT-114021BP	VK-MTT-114021BG
114.3 x DN20	20.7	20.7	■	■	VK-MTT-114027BP	VK-MTT-114027BG
114.3 x DN25	20.7	20.7	■	■	VK-MTT-114034BP	VK-MTT-114034BG
114.3 x DN32	20.7	20.7	■	■	VK-MTT-114042BP	VK-MTT-114042BG
114.3 x DN40	20.7	20.7	■	■	VK-MTT-114048BP	VK-MTT-114048BG
114.3 x DN50	20.7	20.7	■	■	VK-MTT-114060BP	VK-MTT-114060BG
114.3 x DN65	20.7	20.7	■	■	VK-MTT-114073BP	VK-MTT-114073BG
114.3 x DN65	20.7	20.7	■	■	VK-MTT2-114076BP	VK-MTT2-114076BG
114.3 x DN80	20.7	-	■	-	VK-MTT2-114089BP	VK-MTT2-114089BG
139.7 x DN25	20.7	20.7	■	■	VK-MTT2-139034BP	VK-MTT2-139034BG
139.7 x DN32	20.7	20.7	■	■	VK-MTT2-139042BP	VK-MTT2-139042BG

Table continued on next page



Gasketed Fittings

Mechanical tee | Threaded BSP | VK-MTT & VK-MTT2 (continued)

Size (mm x DN)	Threaded BSP					
	Max. working pressure (bar)		Approvals		Part number	
	UL	FM	UL	FM	Painted red	Galvanised
139.7 x DN40	20.7	20.7	▪	▪	VK-MTT2-139048BP	VK-MTT2-139048BG
139.7 x DN50	20.7	20.7	▪	▪	VK-MTT2-139060BP	VK-MTT2-139060BG
139.7 x DN65	20.7	20.7	▪	▪	VK-MTT2-139076BP	VK-MTT2-139076BG
139.7 x DN80	20.7	20.7	▪	▪	VK-MTT2-139089BP	VK-MTT2-139089BG
141.3 x DN25	20.7	20.7	▪	▪	VK-MTT-141034BP	VK-MTT-141034BG
141.3 x DN32	20.7	20.7	▪	▪	VK-MTT-141042BP	VK-MTT-141042BG
141.3 x DN40	20.7	20.7	▪	▪	VK-MTT-141048BP	VK-MTT-141048BG
141.3 x DN50	20.7	20.7	▪	▪	VK-MTT-141060BP	VK-MTT-141060BG
141.3 x DN65	20.7	20.7	▪	▪	VK-MTT-141073BP	VK-MTT-141073BG
165.1 x DN25	20.7	20.7	▪	▪	VK-MTT2-165034BP	VK-MTT2-165034BG
165.1 x DN32	20.7	20.7	▪	▪	VK-MTT2-165042BP	VK-MTT2-165042BG
165.1 x DN40	20.7	20.7	▪	▪	VK-MTT2-165048BP	VK-MTT2-165048BG
165.1 x DN50	20.7	20.7	▪	▪	VK-MTT2-165060BP	VK-MTT2-165060BG
165.1 x DN65	20.7	20.7	▪	▪	VK-MTT2-165076BP	VK-MTT2-165076BG
165.1 x DN80	20.7	20.7	▪	▪	VK-MTT2-165089BP	VK-MTT2-165089BG
168.3 x DN25	20.7	20.7	▪	▪	VK-MTT2-168034BP	VK-MTT2-168034BG
168.3 x DN32	20.7	20.7	▪	▪	VK-MTT-168042BP	VK-MTT-168042BG
168.3 x DN40	20.7	20.7	▪	▪	VK-MTT-168048BP	VK-MTT-168048BG
168.3 x DN50	20.7	20.7	▪	▪	VK-MTT-168060BP	VK-MTT-168060BG
168.3 x DN65	20.7	20.7	▪	▪	VK-MTT-168073BP	VK-MTT-168073BG
168.3 x DN65	20.7	20.7	▪	▪	VK-MTT2-168076BP	VK-MTT2-168076BG
168.3 x DN80	20.7	20.7	▪	▪	VK-MTT2-168089BP	VK-MTT2-168089BG
219.1 x DN25	20.7	20.7	▪	▪	VK-MTT2-219034BP	VK-MTT2-219034BG
219.1 x DN32	20.7	20.7	▪	▪	VK-MTT2-219042BP	VK-MTT2-219042BG
219.1 x DN40	20.7	20.7	▪	▪	VK-MTT2-219048BP	VK-MTT2-219048BG
219.1 x DN50	20.7	20.7	▪	▪	VK-MTT2-219060BP	VK-MTT2-219060BG
219.1 x DN65	20.7	20.7	▪	▪	VK-MTT2-219076BP	VK-MTT2-219076BG
219.1 x DN80	20.7	20.7	▪	▪	VK-MTT2-219089BP	VK-MTT2-219089BG
219.1 x DN100	20.7	20.7	▪	▪	VK-MTT2-219114BP	VK-MTT2-219114BG



Europe, Middle East & Africa

BENELUX

Viking SupplyNet bv
Eekboerstraat 28b-3
NL-7575 AX Oldenzaal
Netherlands
Tel.: +31 (0)541 573233
vikingnetherlands@viking-emea.com

CENTRAL & EASTERN EUROPE

Viking GmbH
Industriestr. 10/12
D-23840 Bad Oldesloe
Germany
Tel.: +49 (0)4531 803 8087
vikinggermany@viking-emea.com

FRANCE

Sprinkler Viking France S.à r.l.
Centre d'Affaires CESCO
4, rue Marconi
BP 25180
F-57075 Metz Cedex 03
France
Tel.: +33 (0)800 10 29 23
vikingfrance@viking-emea.com

IBÉRICA

Viking Sprinkler S.A.
Calle Picos de Europa 4A
San Fernando de Henares
E-28830 Madrid
Spain
Tel.: +34 91 677 8352
vikingiberica@viking-emea.com

ITALY

Viking Italia S.r.l.
Via Pavia, 76
I-27042 Bressana Bottarone (PV)
Italy
Tel.: +39-(0)2- 30550778
vikingitaly@viking-emea.com

MIDDLE EAST

Viking Arabia FZE
LOB 19 Office #2007
Post Box No. 17531
Jebel Ali Free Zone, Dubai
United Arab Emirates
Tel.: +971 (0)4 8895 561
vikingdubai@viking-emea.com

NORDIC

Viking Nordic AB
Staffans Väg 5
S-192 78 Sollentuna
Sweden
Tel.: +46 (0)8 594 415 90
vikingsweden@viking-emea.com

POLAND

Viking SupplyNet Sp. z o.o.
ul. Żelazna 59
PL-00 848 Warsaw
Poland
Tel.: +48 22 103 30 54
vikingpoland@viking-emea.com

ROMANIA & BULGARIA

Viking Romania S.r.l.
Strada Vulturilor 18-18A, cam 3
The LOBBY
RO-030855 Bucharest
Romania
Tel.: +40 21 311 51 48
vikingromania@viking-emea.com

TURKEY

Viking Turkey Yangın Korunum Sistemleri Ticaret A.Ş.
Sahrayıcedit Mah. Halk Sokak
Golden Plaza C Blok No:29, Kat:4, Daire:8
Sahrayı Cedit, Kadıköy - 34734 İstanbul
Turkey
Tel.: +90 (0)216 403 18 00
vikingturkey@viking-emea.com

UK & IRELAND

Viking SupplyNet Ltd.
Unit 2 - Byram House, Newborn Court
Chapel Street
Epworth DN9 1HQ
United Kingdom
Tel.: +44 (0)1427 871 000
vikinguk@viking-emea.com

For further information,
please visit
www.viking-emea.com



For further information, please contact your local Viking sales office or refer to the technical documentation.
The contents of this publication are subject to modifications without notice.
Fireking™ is a brand of The Viking Corporation

Photo
Cover: Shutterstock @ John_T

Trusted above all.

Viking S.A. | 21 Z.I. Haneboesch, L-4562 Differdange / Niederkorn, Luxembourg | Tel.: +352 58 37 37 - 1, vikinglux@viking-emea.com

