

Seismic bracing

B-LINE
SERIES



TOLCO seismic bracing

UL listed and FM approved for fire sprinkler systems



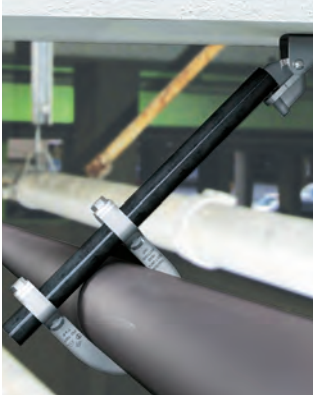
Powering Business Worldwide

TOLCO™ seismic bracing assemblies meet NFPA guidelines

Lateral seismic brace assemblies

NFPA 13 (2013) Sec. 9.3.5.5

"Lateral sway bracing shall be provided on all feed and cross mains regardless of size and all branch lines and other piping with a diameter of 2½ inches (65mm) or larger." *



- Fig. 1001 sway brace attachment
- Fig. 980 universal swivel sway brace attachment
- 1" (or up to 2") schedule 40 brace pipe
- Shown in image on the right attached to Fig. 828 universal seismic sway brace structural attachment

Longitudinal seismic brace assemblies

NFPA 13 (2013) Sec. 9.3.5.6

"Longitudinal sway bracing spaced at a maximum of 80 feet (24.4m) on center shall be provided for feed and cross mains." *



- Fig. 4LA (left) or Fig. 4L (right) in-line longitudinal sway brace attachment
- Fig. 980 universal swivel sway brace attachment
- 1" (or up to 2") schedule 40 brace pipe
- Can be attached to other TOLCO seismic structural attachments, such as the Fig. 800, Fig. 825, or Fig. 828

Four way "top of riser" seismic brace assembly

NFPA 13 (2013) Sec. 9.3.5.8.1

"Tops of risers exceeding 3 feet (1m) in length shall be provided with a four way brace." *

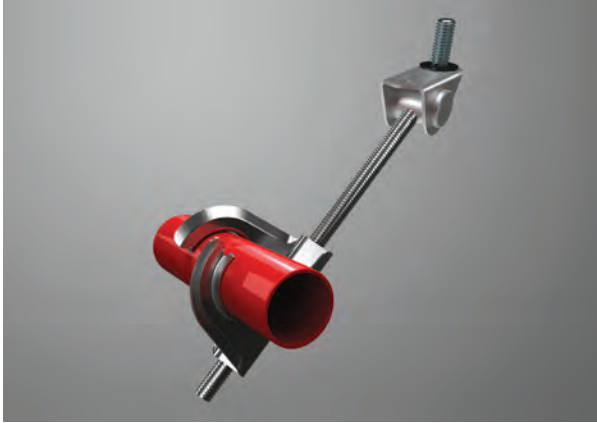


- Shown with two Fig. 1001 Fast Clamp™ sway brace attachments
- Secured to wall using two Fig. 980 universal swivel sway brace attachments
- 1" (or up to 2") schedule 40 brace pipe

Branch line restraints

NFPA 13 (2013) Sec. 9.3.6.1

“Restraint is considered a lesser degree of resisting loads than bracing and shall be provided...”*



- Fig. 74 structural attachment
- Fig. 77 system piping attachment
- Fig. 100 all thread rod

*For the most up-to-date and full details on the NFPA guidelines, please refer to the NFPA website: www.nfpa.org

Create a complete submittal package with TOLBrace software

Designed for ease of use, the B-Line series TOLBrace™ software steps the user through a series of questions to determine the scope of the project. It helps the user create detailed reports of the appropriate seismic bracing components and TIFF files for CAD use. It calculates the correct bracing loads per NFPA 13 guidelines, Uniform Building Code (UBC) and International Building Code (IBC). Also, to help ensure users are following the latest codes, standards, and product requirements, TOLBrace software also includes an automatic update feature.

TOLBrace software assists fire sprinkler system designers in:

- Seismic force factor calculations (F_p)
- Zone of influence calculations
- Sway brace orientation and angle selection
- Structural attachment of sway braces
- Brace material selection
- Appropriate selection of UL listed and FM approved sway brace components
- Creating a submittal sheet with all relevant information with the click of a mouse
- Available in English, Spanish, and Korean

TOLBrace follows the requirements of:

- NFPA 13, 1999, 2002, 2007, 2010 & 2013
- Factory Mutual
- Uniform Building Code
- International Building Code
- National Building Code of Canada
- California Office of Statewide Health Planning & Development (OSHPD)

For additional support, contact your TOLCO seismic bracing specialist at:

Phone: 800-786-5266
Email: SeismicQuotes@Eaton.com
Email: TolcoSupport@Eaton.com

To learn more, visit
Eaton.com/TOLCO

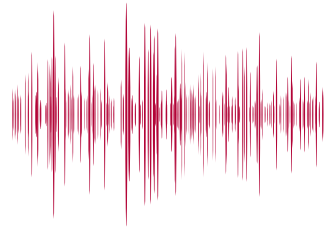
The TOLCO advantage

Disadvantages of traditional seismic bracing

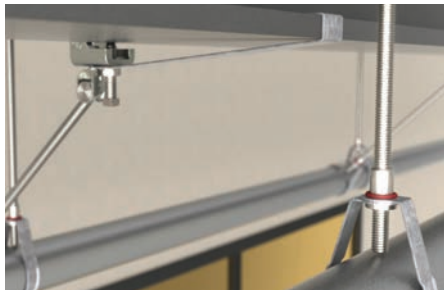
- ✗ Commodity materials
- ✗ High cost in field labor, cutting, welding, and fastening
- ✗ No pre-approvals or listings (UL, FM)
- ✗ Higher engineering cost
- ✗ No visual verification options can make inspection of proper installation more difficult
- ✗ No standard work – every system requires a specialized installation

Advantages of TOLCO seismic bracing

- ✓ Specialized seismic components, braces, and restraints
- ✓ Designed for easy, fast installation
- ✓ UL listed and FM approved
- ✓ OSHPD Preapproval for California Building Code (CBC) 2013 and CBC 2016
- ✓ Visual verification of proper installation
- ✓ Standardized installation practice
- ✓ Backed by TOLBrace™ Seismic zone of influence calculation software, for installation per NFPA 13



TOLCO – seismic bracing solutions



Beam clamp with retaining strap



Longitudinal brace



Lateral brace



Branch line restraint



Universal structural attachment



Riser brace

TOLCO seismic bracing specified worldwide

TOLCO™ seismic bracing products are specified worldwide for bracing fire sprinkler systems to help against damage from earthquakes. Installing our UL listed and FM approved bracing products help to ensure compliance with the National Fire Protection Association Standard for the Installation of Fire Sprinkler systems (NFPA 13).



Why TOLCO seismic bracing?

TOLCO seismic bracing products are manufactured in Reno, Nevada and the TOLCO seismic engineering team is located on the “Ring of Fire” in Fontana, California.

Being located in a virtual “living laboratory of seismic activity” has driven our team of engineers to develop some of the best seismic bracing product designs in the industry. Our products are known and respected by installers, designers and fire protection authorities worldwide.

For over 45 years, TOLCO seismic bracing products have been installed around the world where earthquakes are prevalent. Our UL listed and FM approved quality seismic bracing products are confidently relied upon.

TOLCO seismic bracing key features help drive results



Visual verification

As shown above with TOLCO Fig. 980, break-off bolts help verify proper installation torque.



Labor savings

As shown above using TOLCO Fig. 4L, seismic attachments install with a minimum of fasteners, require no threading or welding, and can be adjusted in the field to fit the application.



Universal features

As shown above using TOLCO Fig. 828, the Universal Seismic Structural Attachment can be used on various types of steel structures to attach seismic bracing assemblies.

For more information, visit
Eaton.com/fps

U.S. Customer Service Center is staffed Monday through Friday from 7 a.m. to 5 p.m. Central Standard Time.

Eaton - United States - Main office
509 West Monroe Street
Highland, IL 62249
United States
800-851-7415

Eaton - United States
13201 Dahlia Street, Suite 200
Fontana, CA 92337
United States
909-427-9756

Eaton - Canada
5925 McLaughlin Road
Mississauga, ON L5R 1B8
Canada
800-569-3660

Eaton - Europe
Building 2, Argosy Court,
Whitley Business Park, Scimitar Way
Coventry, CV3 4GA
United Kingdom
+44 (0) 1278 783371

Eaton - Saudi Arabia
PO Box 70160 - Al Khobar - 31952
Kingdom of Saudi Arabia
+966 506 395 973

Eaton
1000 Eaton Boulevard
Cleveland, OH 44122
United States
Eaton.com

B-Line Division
509 West Monroe Street
Highland, IL 62249
Eaton.com

© 2021 Eaton
All Rights Reserved
Printed in USA
Publication No. SA309005EN
May 2021

Eaton is a registered trademark.

All other trademarks are property
of their respective owners.

Follow us on social media to get the
latest product and support information.

