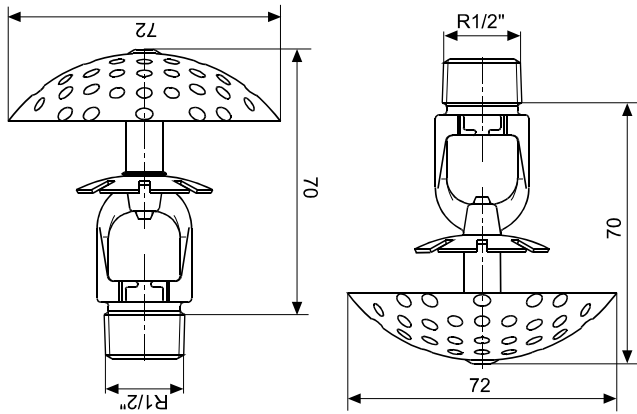




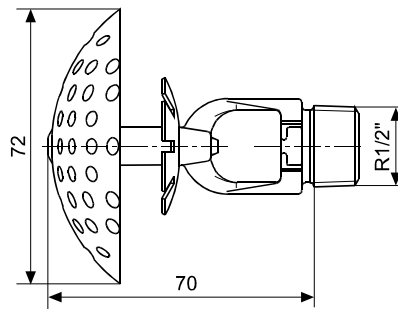
Discharge Devices & Nozzles | Foam Sprinkler / Nozzle | MXD-FW21 Low Expansion Foam-Water Nozzle



SPECIFICATIONS

Related documents	None available
Approvals	
Material	Stainless steel
Connection	1/2"
Installation	Upright / Pendent / Horizontal
K-factor	28, 40, 57, 80, 115
Working pressure	1-12 bar
Coverage area	Max. 12.25 m ²
Coverage area K40/57 pendent	Max. 9 m ²
Coverage area (845133 - pendent)	Max. 9 m ²
Nozzle spacing (845133 - horizontal)	Max. 2.5 m
Distance to tank shell (845133 - horizontal)	Max. 0.5 m
Foam expansion ratio*	5-8
Weight	0.10 kg

* According to concentrate, pressure & K-factor



Part number	Type	K-factor (Metric)	Nominal water discharge density (mm/min.)	Minimal water discharge density (mm/min.)
845126	Upright / Pendent	28	3.3	2.3
845127		40	4.7	3.3
845128		57	6.75	4.7
845129		80	9.4	6.75
845130		115	13.5	9.6
845133	Horizontal / Pendent	28	4.0	2.3

Note: This document contains basic product information only. Information, photos and drawings are not contractually binding. In all cases, the manufacturer's full technical documentation (see "Related Documents" above) remains the reference document. Note that certificates, test reports and approvals may be published in the OEM name. The contents of this publication are subject to modifications without notice. All rights reserved

Trusted above all.

Viking S.A. (ed.) | 21, Z.I. Haneboesch | L-4562 Differdange/Nieder Korn | Luxembourg | vikinglux@viking-emea.com | www.viking-emea.com

