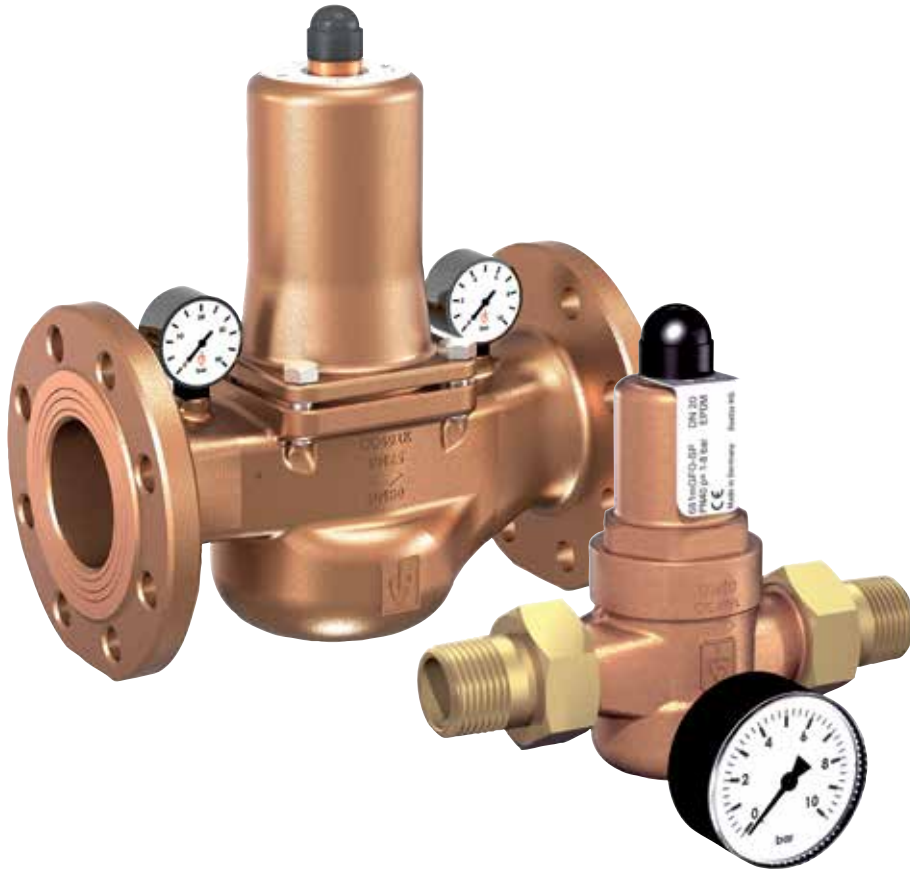


Pressoreduct HP



Pressure reducer valves

Pressure protection on the supply side in domestic, commercial and industrial systems DN15 – DN100

Pressoreduct HP

Pressure reducers are used in piping systems where, despite varying pressures on the inlet side, a certain pressure must not be exceeded on the outlet side. One manometer is included with the threaded version.



Technical description

Application:

Potable water supply according to DIN 1988
 Process water supply in industrial and building technology
 Snow-making equipment
 Fire-fighting equipment and sprinkler systems
 Shipbuilding industry and offshore plants

Functions:

Protection against extreme supply pressures.

Dimensions:

DN 15 - DN 100

Pressure:

SP Standard version
 Inlet pressure:
 DN 15 - 50 (PN40) up to 40 bar,
 DN 65 - 100 (PN16) up to 16 bar.
 Outlet pressure:
 1 to 8 bar
 High and low-pressure (HP and LP) versions available on request.

Temperature:

Max. admissible temperature, TS: 120 °C
 Min. admissible temperature, TSmin: -20 °C

Media:

For water, neutral and non-sticking liquids, compressed air and neutral gases; optionally with FPM elastomere seals for non-neutral media i.e. oils, fuels, oil-laden compressed air, etc.
 Not suitable with steam.

Material:

Body: Gunmetal CC499K. Stainless steel version available on request.
 Internal parts: Gunmetal CC499K, Stainless Steel 1.4404
 Spring: Spring steel with anti-rust protection 1.1200
 Seals: EPDM
 Strainer: Stainless Steel 1.4404.
 Mesh size DN 15 to DN 32 0,6 mm
 DN 40 and up 0,75 mm

Approvals:

Constructed according to DIN EN 1567, DIN 1988, DIN EN ISO 3822 and PED 2014/68/EU.
 DIN-DVGW type examination (up to 80°C)
 Type approval ACS
 Type approval WRAS (up to 85°C)
 TR ZU 032/2013 - TR ZU 010/2011

Marking:

DN, material, and flow direction arrow.
 Label with technical specification, place of origin and CE.

Warranty:

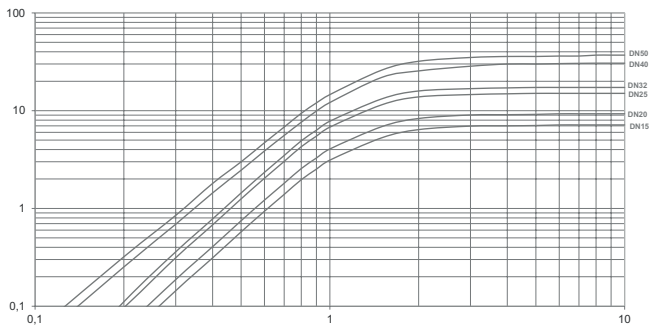
2-year warranty

Dimensioning

Dimensioning by pressure loss on the outlet pressure side

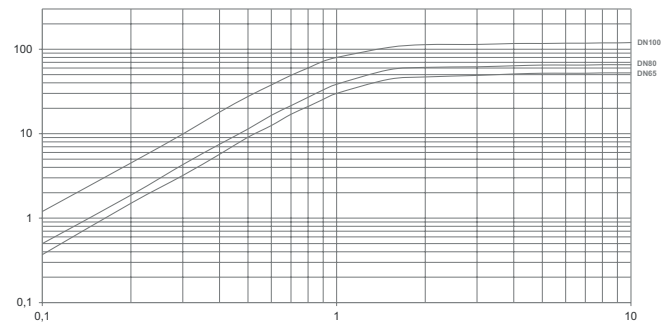
Flow chart water

DN 15 - 50 Flow rate V in [m³/h]



Pressure drop delta p [bar]

DN 65 - 100 Flow rate V in [m³/h]



Pressure drop delta p [bar]

Dimensioning by flow velocity

For liquids:

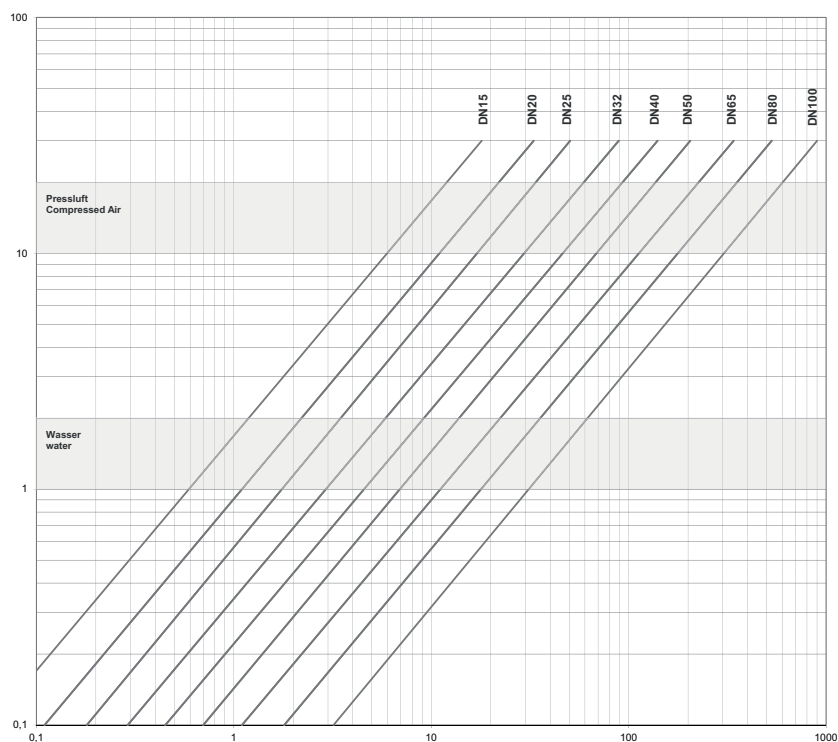
Using this chart you can determine the nominal diameter (DN) for a given flow volume V (m³/h).

According to DVGW-guidelines (DIN 1988) a flow velocity of 2 m/s in domestic water supply systems should not be exceeded.

$$V \text{ (m}^3\text{/h)} = \frac{V_{\text{Norm}} \text{ (Nm}^3\text{/h)}}{p_{\text{absolut}} \text{ (bar)}} = \frac{V_{\text{Norm}}}{p_U + 1}$$

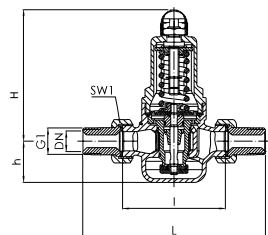
Actual cubic meter values are based on the prevailing pressure of the medium on the outlet side of the pressure reducer

Flow velocity c [m/s]



Flow volume V [m³/h]

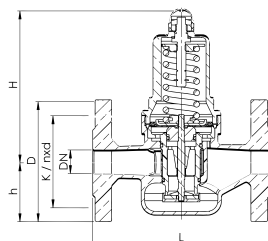
Articles



Male threads

Inlet pressure 40 bar
Outlet pressure 1-8 bar

DN	G1	L	l	h	H	m [kg]	SW1	Coefficient of flow K_{vs}^{**} m ³ /h	EAN	Article No
15	1/2	142	80	33	102	1,2	30	3		301052-00400
20	3/4	158	90	33	102	1,3	37	3,5		301052-00500
25	1	180	100	45	130	2,4	46	6,7		301052-00600
32	1 1/4	193	105	45	130	2,6	52	7,6		301052-00700
40	1 1/2	226	130	70	165	5,5	65	12,5		301052-00800
50	2	252	140	70	165	6,0	75	15		301052-00900



Flanged

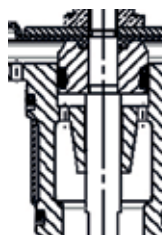
Inlet pressure SP, HP up to 16 bar
Outlet pressure 1-8 bar

DN	D	L	m [kg]	h	H	K/nxd	Coefficient of flow K_{vs}^{**} m ³ /h	EAN	Article No
65	185	290	20	89	235	145 / 4xM16	25		301052-01000
80	200	310	22	96	235	160 / 8xM16	26		301052-01100
100	200	350	40	102	320	180 / 8xM16	80		301052-01200

*) Inlet DIN EN 10226

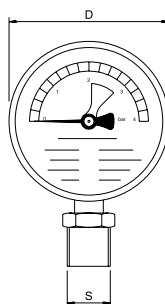
**) The K_{vs} value was determined according to DIN EN 60534-2-3. Instructions on how to determine size and capacity are to be found in the graphs.

Accessories



Valve insert

DN	Article No.
65	301052-01010
80	301052-01110
100	301052-01210



Manometer

Display range 0-10 (0-25) bar, with green marking indicating working pressure range.

DN	Pressure Range	Article No.
15-50	0-10 bar	301052-00420
65/80	0-25 bar	301052-01020
100	0-25 bar	301052-01220

The products, texts, photographs, graphics and diagrams in this document may be subject to alteration by IMI Hydronic Engineering without prior notice or reasons being given. For the most up to date information about our products and specifications, please visit www.imi-hydronic.com.